



Parks and Recreation Board Agenda
Department of Public Services
851 South Eton-Conference Room
Tuesday, September 9, 2025
6:30 PM

- I. Call to order**
- II. Roll Call**
- III. Announcements, Introductions of Guests & Chairpersons Comments**
 1. Introduction of Clinise Kirkwood, Parks and Recreation Coordinator
- IV. Open To The Public for Items Not On the Agenda** *(two minutes per person)*
 - No one may speak a second time until everyone in the audience has spoken.
 - The chairperson may alternate speakers pro & con on issues being discussed.
- V. Approval of the minutes of: August 5, 2025** *(regular meeting)*
- VI. Unfinished Business**
 1. Poppleton Park Playground Improvements
- VII. New Business-** *Written and submitted by 5pm Monday at the Birmingham Ice Sports Arena, one week prior to the meeting.*
 1. 2026 Parks and Recreation Board Schedule
- VIII. Miscellaneous Communications**
 1. All Communications received - Poppleton Park Playground Improvements
- IX. Reports From Staff**
 1. July Scavenger Hunt
- X. Items for Next Meeting on Tuesday, October 28, 2025**
 1. Review of Park Rules and Regulations

XI. Adjournment

Individuals requiring accommodations, such as interpreter services, for effective participation in this meeting should contact the City Clerk's Office at (248) 530-1880 (voice) or 248-644-3405 (TDD) at least one day in advance to request mobility, visual, hearing, or other assistance.

Las personas que requieren alojamiento, tales como servicios de interpretación, la participación efectiva en esta reunión deben ponerse en contacto con la Oficina del Secretario Municipal al (248) 530-1880 por lo menos el día antes de la reunión pública.
(Title VI of the Civil Rights Act of 1964).

*If you cannot attend the meetings, please contact Connie Folk at the Birmingham Ice Arena (248) 530-1642.
Minutes are available for review at the Birmingham Ice Sports Arena, 2300 East Lincoln, Birmingham, MI 48009*

PARKS & RECREATION BOARD MISSION STATEMENT

The Parks and Recreation Board strives to provide opportunities for the enjoyment, education, and inspiration for present and future generations of residents and visitors through stewardship of natural, cultural and recreational resources. By continuously elevating the beauty and quality of the parks and recreation system of Birmingham, the Parks and Recreation Board will promote health and wellbeing, and strengthen the community.

You may also present your written statement to:
City of Birmingham, Parks and Recreation Board
851 South Eton, Birmingham, Michigan 48009 prior to the meeting.

City of Birmingham
Parks And Recreation Board Meeting Minutes
August 5, 2025, 6:30 p.m.
851 South Eton - Conference Room

I. Call To Order

The meeting was called to order at 6:30 p.m.

II. Roll Call

Present: Chair Heather Carmona, Vice Chair Pam Graham; Board Members Susan Collins, Jessica Einstein, Sarah Kupczyk, Anne Lipp, Steve Sweeney; Student Board Member Jack Bassett, Abigail Murphy

Absent: Alternate Board Members Narlu Castellano, Joseph Wrobel

Staff: Department of Public Services Director Zielinski; Ice Arena and Facilities Superintendent Folk, Parks and Recreation Manager Laird, Parks and Recreation Foreman McNab

Presenter: Lance A. Shipman, LLA, CPSI Penchura Recreation Consultant

Guests: Maureen Kijek, Ross Lee, Kristi Lewis, John Lewis, Michael Lewis, Kevin Kozlowski, John Rusche, Bob Bernhard, Renee Bernhard, Jeff Heichol, Jenny O'Langhlin, Rachel Allare, Kathleen McInerney, Liz Pasquarette, Cliff Ragor, Danny Seidman, Jack Burns, Anthony Petrovich, Susan Shacket, Joan Ritter, Karen Hsu

III. Announcements, Introductions Of Guests & Chairperson Comments

- 1. Thank you to all volunteers for distributing Poppleton Park Playground Improvement Flyers**

IV. Open To The Public For Items Not On The Agenda

V. Approval Of The Minutes - June 10, 2025

Motion by Graham

Seconded by Lipp to approve the minutes from the June 10th meeting.

Motion carried, 7-0.

ROLL CALL VOTE

Yeas: Carmona, Sweeney, Kupczyk, Einstein, Collins, Graham, Lipp

Nays: None

VI. Unfinished Business

- 1. Bench Swing Options**

PRM Laird presented the item. Staff answered informational questions.

Board members raised the following points during discussion:

- Comfort and accessibility should be prioritized for any bench swing purchase.

- Premier Poly Steel likely has a number of options available, including ones with and without arms.
- It would be helpful to know if any of the benches have accessibility ratings.
- The estimated costs for these benches might be too much for an amenity coming out of the general parks fund.
- Artists might be interested in designing art for benches in the park. The Public Arts Board could potentially help facilitate this. The Noble Winds bench options have space for graphics.
- Benches should be considered by the Board on a site-by-site basis moving forward.
- Board members should retain this portion of the physical agenda packet for future reference.
- Accessibility is a priority.
- It might be useful to plan on having shaded options for a certain number of people in each park. Water fountains and picnic tables could also be standard options. It could be useful to have baseline options for these features, and then special needs or donations could be used to optimize these features on a case-by-case basis.

VII. New Business

1. Playground Design Public Input Session Poppleton Park Playground

PRM Laird presented the item. Mr. Shipman presented the playground area plans. Mr. Shipman and staff answered informational questions.

Board members raised the following points during discussion:

- The pathway around the playground is wider than it seems in the drawing. If there would be a way to communicate that width better in the drawings, that would likely be beneficial for the public's understanding.
- Increasing the size of the legend and the writing on the drawings would also be helpful.
- These plans reflect on the City's Parks and Recreation program well. Mr. Shipman's work on the project is appreciated.
- There was some concern that parents would not comfortably be able to see into the top level of the Volo Aire.
- An interest in options that might offer comparable accessibility and increased visibility were discussed.
- A comparable playground to the proposed equipment could be visited in Dearborn, Michigan
- Baby swings should be available at the Park. It would be positive if monkey bars could be incorporated as well.
- Bike racks should be present at the Park.

Public Comment

Maureen Kijek supported adult size changing facilities in park restrooms, shade and misting stations for increased accessibility, and the Board's efforts towards increasing accessibility in the parks and playgrounds in general.

Michael Lewis and another commenter supported swings that were high enough to accommodate older children.

Avery and Owen Olson supported swings, rock walls, hide and seek spaces, zip lines, tire swings, rock walls, trampolines, and space for chalk use.

Alex Petrovich supported addressing drainage issues in Poppleton and adding equipment that could be enjoyed by tweens and teens.

Jenny O'Langhlin supported the playground designs due to their extensive accessibility, praising Mr. Shipman, the Board, and staff for their prioritization of accessibility needs.

Joan Ritter supported Board members finding and trying out the playground elements in real life before voting on the item.

Kathleen McInerney supported muted colors for the playground structure.

Danny Seidman thanked the Board, Mr. Shipman, and staff, and supported the plans, adding monkey bars, adding adult fitness equipment elsewhere in the park, adding a restroom, adding a bike rack, adding swings for taller/older children, as well as adding a basketball court, a water fountain, and other potential features in the future.

John Rusche supported adding shade, exercise equipment for adults, and a basketball court, as well as evaluating the parking plans for the park.

Cliff Rager supported the plans, and commented regarding the location of the restroom and the need for landscaping.

Kevin Kozlowski supported sandboxes and swings that can accommodate older children.

Jeff Heichel supported additional benches and shade, as well as more future investment in Poppleton Park in other areas.

Ross Lee supported the plans, as well as baby swings, a sandbox, and swings that can accommodate taller/older children.

Patty Blair supported the plans.

Danny Hill supported adding bucket swings and picnic tables.

VIII. Miscellaneous Communications

- 1. All Communications received - Poppleton Park Playground Improvements**
- 2. Booth Park Natural Area-Native Perennial Plug Planting Event (Wednesday, August 6th)**

IX. Reports from Staff

- 1. Pumphouse Park and West Lincoln Well & Park Update**

X. Items For Next Meeting

XI. Adjournment

The meeting was adjourned at 8:34 p.m.



Connie Folk, Ice Arena and Facilities Superintendent

Laura Eichenhorn, City Transcriptionist



MEMORANDUM

Department of Public Services

DATE: September 4, 2025

TO: Parks and Recreation Board

FROM: Carrie Laird, Parks and Recreation Manager

SUBJECT: Poppleton Park Playground Improvements

INTRODUCTION:

As described at the August 5, 2025 Parks and Recreation Board/ Poppleton Park Playground Public Input Session ([Agenda/Minutes](#) still in draft form), the Department of Public Services (DPS) continues implementing city-wide playground improvements, a priority of the available Parks and Recreation Bond, and Poppleton Park is next on the list for playground improvements. Priority playground improvements are described in the [2024-2028 Parks and Recreation Master Plan](#). Funding is budgeted this fiscal year in order to accomplish a fully inclusive and accessible playground at Poppleton Park.

Feedback received from the Public Input Session in August, survey on Engage during the month of August, and any other form of communication such as email and letters was taken into account and incorporated as appropriate into an updated draft playground concept plan for the Board's review at the September 9, 2025 Parks and Recreation Board meeting.

BACKGROUND:

As mentioned previously, Poppleton park is a 17.2 acre community park. An entire park master plan was prepared in 2016 however the area of focus for this project of playground improvements is in the existing area of the playground and extending to the south, along Oxford.

At the August Parks and Recreation Board meeting, the City's selected playground designer reviewed the initial draft concept and facilitated feedback. As described at the meeting, the initial draft concept for the Poppleton playground had a very strong emphasis on inclusivity, utilizing elements for the wheelchair user, as well as a fully accessible main tower structure all the way to its highest point, and considered the only fully accessible tower on the market. Other features include accessible swings and seesaws. The concept also includes a solid safety surface for enhanced accessibility for all ages and abilities.

As a reminder, the playground improvements will ensure access to the playground and include installation of sidewalks leading up to and around the playground from Oxford Street, a curb cut for nearby accessible parking, shade elements, more seating, and more trees. Site amenities such as a drinking fountain, bike racks, trash and recycling receptacles and an area for temporary restrooms have also been included. A restroom building is not part of this project, as the department is researching different styles and options to include in the park system, but can be added at a later time. All items reviewed at the August meeting.

Upon receipt of feedback from public comment, survey results (attached), letters and emails, the playground design architect has modified the playground area layout and draft concept plan to incorporate many of the most requested items, including additional taller in height (10 ft) swings for all ages, toddler swings, a bench swing, another shade structure over a sandbox, a mister pole, more opportunities for the 2-5 age group, and more seating. The updated layout and concept plan are part of this packet.

It is important to note, many comments received on Engage Birmingham were regarding shade and keeping existing trees. The concept plan has always included keeping the existing trees. It is the City's intent to keep all existing trees unless upon pre-project evaluation their condition or proximity to the project impacting their health determines otherwise. If any removal of tree(s) is necessary, at least two trees will be planted for every removal. In addition to keeping all existing trees, the concept plan includes numerous new, additional trees to be planted. The updated layout does include the addition of one more shade canopy, totaling now three. The style of bench swing selected creates shade for the persons using it as well.

There were some concerns about the height of the tower, visibility, and the look and feel of the equipment. Staff visited Lapeer Park in Dearborn to look at a Vole Aire structure similar in style to what is proposed for Poppleton. The inside of the top of the tower was visible from ground level. Staff observed a variety of ages using the structure, some younger than five. Parents were asked about visibility and any concerns, and there were none. Staff recommends this playground for the multitude of opportunities for play for all ages and especially all abilities. Kids of all ages and abilities are attracted to this play structure, which will be a showcase piece for Birmingham, our first fully inclusive playground. There will be plenty of screening with existing trees and new trees between the playground structure and nearby residents, yet balanced so that visibility of the tower will remain for the caregiver of the children exploring the structure.

The draft concept plan was reviewed by the staff liaisons to the Multimodal Transportation Board (MMTB), as pertinent items such as accessible sidewalks, and bike racks are included. The concept was reviewed in how it relates overall to the [Multimodal Transportation Plan](#). A memorandum from the staff liaisons to the MMTB is included with this packet.

The Planning department also considered the [2040 Birmingham Plan](#) during review of the draft concept plan for Poppleton Park.

The Parks and Recreation Board will be asked to take a closer look at the parking along Oxford at the September meeting, to review and advise on two different options that are being considered by DPS, Engineering, and Police Departments. A very preliminary sketch of parking options is included in the packet as well for Board comment. The Engineering and Police Departments are in favor of additional ADA parking spaces to be added off of Oxford for the new

inclusive playground equipment. Engineering and Police are open to both parking options but have seen positive reaction for the angle parking installed recently at Linden Park off of Brandon. At times, the City will receive complaints about parallel parking since people drive past a space and back in, which could potentially impede traffic. Once the Parks and Recreation Board decides their advisement on parking, Engineering will work with DPS to determine and implement the appropriate plans for parking along Oxford. It is likely that any curb cut along Oxford will require the shifting of the sidewalk that runs parallel to Oxford.

PUBLIC COMMUNICATIONS:

A robust notification program for the public input session and opportunity to provide comments was implemented in advance of the August 5, 2025 Parks and Recreation Board meeting. Postcards were sent to every resident, flyers were distributed throughout Birmingham neighborhoods, lawn signs were posted in the neighborhood of Poppleton Park and at other Community Parks such as Barnum, social media and e-newsletter promotions were utilized, there was an article in the August edition of the Around Town publication, and a press release was published.

A survey was available on Engage Birmingham between August 6-August 22, 2025 for the draft playground concept. Results of the survey are attached.

The [September Around Town](#) was utilized to promote the September 9, 2025 Parks and Recreation Board meeting with the updated playground draft concept plan.

FISCAL IMPACT:

The budget for the fully inclusive play area including sidewalks and site amenities is \$1,100,000. Funding is available utilizing the Parks Land Improvements account, with the Parks and Recreation Bond Issue. The City also budgets separately for items such as trees and parking improvements which may be utilized to cover any additional cost over and above the \$1.1 million..

The Birmingham Rotary Club and the City are currently in the process of finalizing an agreement for a contribution of \$50,000 towards the Poppleton Park Playground Project in honor of their 100 year celebration last year.

The City continues to offer donation opportunities for Poppleton Park improvements, and is planning for an upcoming campaign for Poppleton through the donate page on the City website, under the Parks and Recreation section.

A preliminary cost estimate is currently being prepared by the playground design architect.

SUMMARY:

Inclusive play is a top priority of the recently updated 2024-2028 Parks and Recreation Master Plan, and includes a recommended prioritization of inclusive playground installation based on a synthesis of information gathered or generated during the planning process. Poppleton is one of the highest ranking playgrounds for priority replacement with an inclusive playground.

Upon completion of Board and public input, the architect has revised the draft concept for Poppleton Park, incorporating feedback as appropriate, with a final proposed design to be presented at the September 9, 2025 Parks and Recreation Board meeting. Updates to the draft

concept include: additional taller in height (10 ft) swings for all ages, toddler swings, a bench swing, another shade canopy over a sandbox for a total of 3 shade structures, a mister pole, more play opportunities for the 2-5 age group, and more seating.

Upon recommendation of the final draft concept plan design, and advisement on parking options for the Poppleton Park playground improvement project by the Parks and Recreation Board, staff will prepare to bring the project to the City Commission for final approval at the October 27, 2025 City Commission meeting.

The cost estimate is currently underway, anticipated to meet the budget of \$1,100,000, and ready in time for the October 27, 2025 City Commission meeting.

ATTACHMENTS:

- Updated Draft Concept Plan, Playground Layout and 3D renderings
- Initial Draft Concept Plan & Playground Layout
- Engage Birmingham Survey Results
- Memorandum from Staff Liaisons to the Multimodal Transportation Board
- Preliminary sketch of options for parking along Oxford Street
- Presentation for the September 9, 2025 Parks and Recreation Board meeting

RECOMMENDED BOARD ACTION:

To approve the updated draft concept plan and playground layout for the Poppleton Park Playground Improvement project as presented, and to forward to the City Commission for their consideration and final approval,

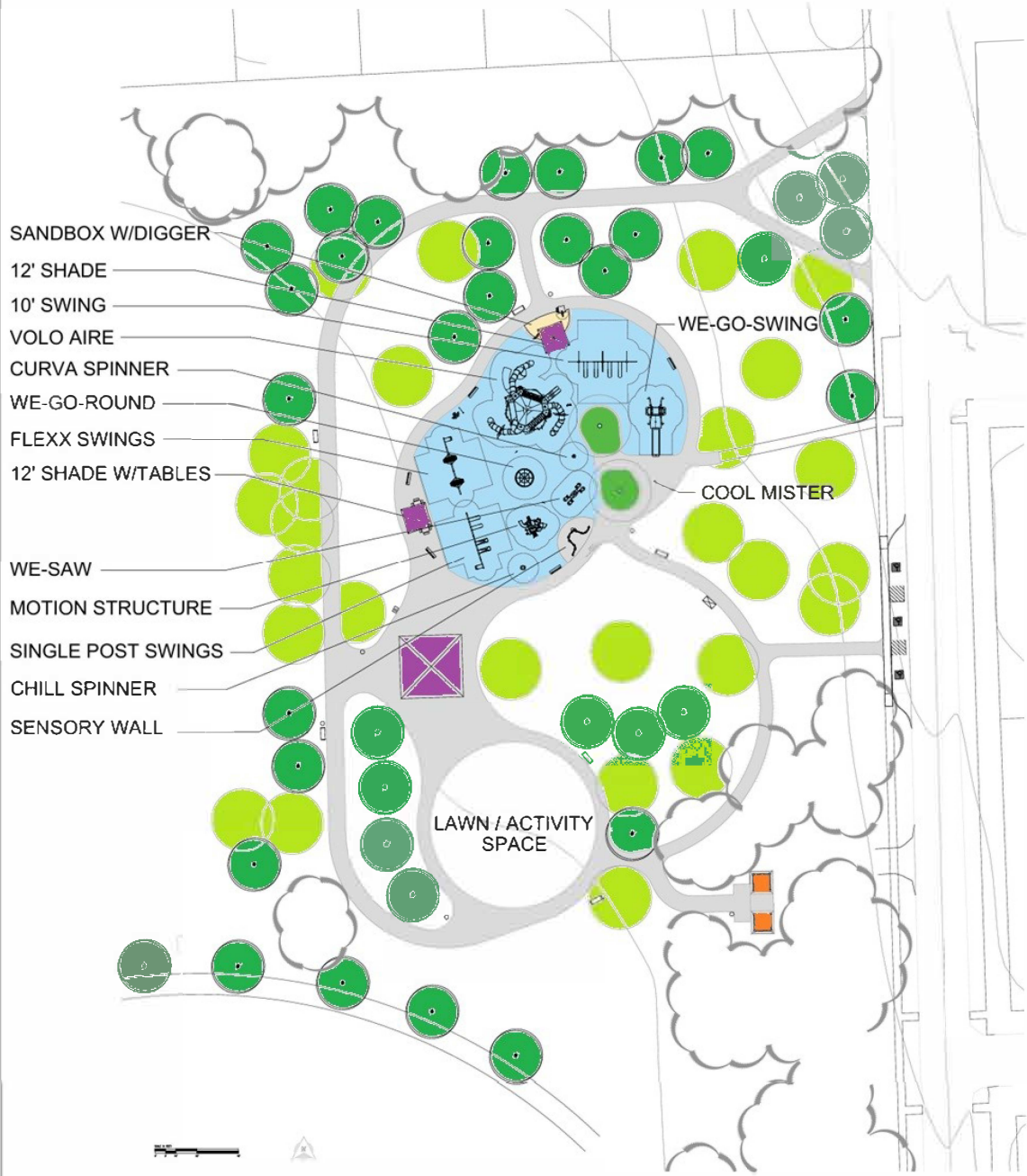
AND,

Recommending the parallel parking option along Oxford Street,

OR

Recommending the angled parking option along Oxford Street

Updated Concept Plan Playground Layout & Renderings



LEGEND

-  EXISTING TREES
-  PROPOSED DECIDUOUS TREE
-  PROPOSED SHADE STRUCTURE
-  PROPOSED RESTROOM ENCLOSURE
-  PROPOSED PARK BENCH
-  PROPOSED PLAYGROUND BENCH
-  PROPOSED SWING BENCH
- PROPOSED FOUNTAIN
- PROPOSED RECEPTACLE

PLAYGROUND CONCEPT PLAN

PL-1



The play components identified on this plan are IPEMA certified. (Unless model number is preceded with *) The use and layout of these components conform to the requirements of ASTM F1487. To verify product certification, visit www.ipema.org

THIS PLAY AREA & PLAY EQUIPMENT IS DESIGNED FOR AGES 2-12 YEARS UNLESS OTHERWISE NOTED ON PLAN.

IT IS THE MANUFACTURERS OPINION THAT THIS PLAY AREA DOES CONFORM TO THE A.D.A. ACCESSIBILITY STANDARDS, ASSUMING AN ACCESSIBLE PROTECTIVE SURFACING IS PROVIDED, AS INDICATED, OR WITHIN THE ENTIRE USE ZONE.

THIS CONCEPTUAL PLAN WAS BASED ON INFORMATION AVAILABLE TO US, PRIOR TO CONSTRUCTION, DETAILED SITE INFORMATION INCLUDING SITE DIMENSIONS, TOPOGRAPHY EXISTING UTILITIES, SOIL CONDITIONS, AND DRAINAGE SOLUTIONS SHOULD BE OBTAINED, EVALUATED, & UTILIZED IN THE FINAL DESIGN. PLEASE VERIFY ALL DIMENSIONS OF PLAY AREA, SIZE, ORIENTATION, AND LOCATION OF ALL EXISTING UTILITIES, EQUIPMENT, AND SITE FURNISHINGS PRIOR TO ORDERING. SLIDES SHOULD NOT FACE THE HOT AFTERNOON SUN.

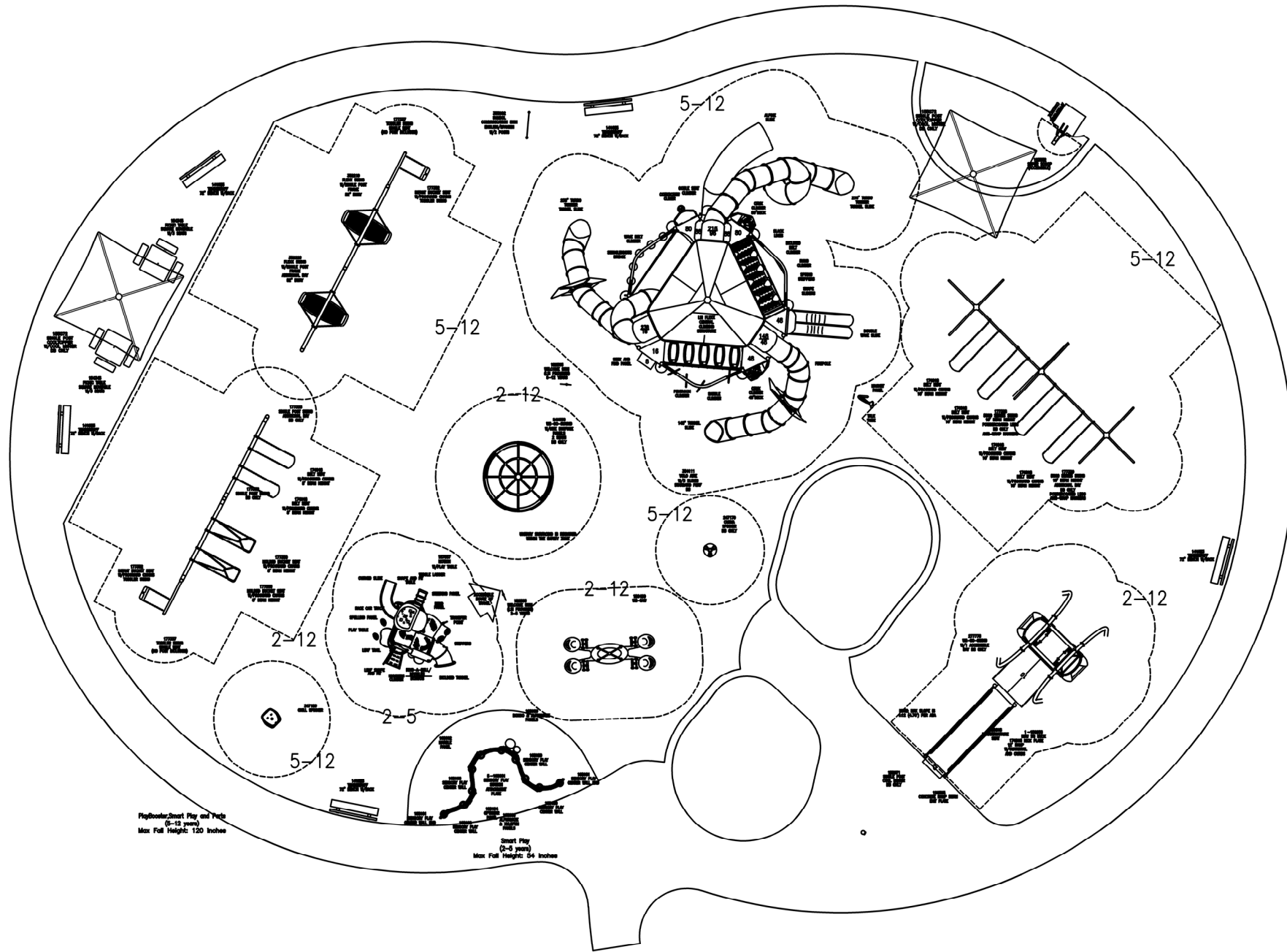
CHOOSE A PROTECTIVE SURFACING MATERIAL THAT HAS A CRITICAL HEIGHT VALUE TO MEET THE MAXIMUM FALL HEIGHT FOR THE EQUIPMENT (REF. ASTM F1487 STANDARD CONSUMER SAFETY PERFORMANCE SPECIFICATION FOR PLAYGROUND EQUIPMENT FOR PUBLIC USE, SECTION 8 CURRENT REVISION). THE SUBSURFACE MUST BE WELL DRAINED. IF THE SOIL DOES NOT DRAIN NATURALLY IT MUST BE TILED OR SLOPED 1/8" TO 1/4" PER FOOT TO A STORM SEWER OR A "TRENCH DRAIN".

AREA OF ACCESSIBLE/PROTECTIVE SURFACING (TURF SUGGESTED)
10,511 SF

DESIGNED BY:
AH

COPYRIGHT: 8/29/2025
LANDSCAPE STRUCTURES, INC.
601 7th STREET SOUTH - P.O. BOX 198
DELANO, MINNESOTA 55328
PH: 1-800-328-0035 FAX: 1-763-972-6091

Date	Previous Drawing #	Initials



PlayBooster/Smart Play and Path
(6-12 years)
Max Fall Height: 120 inches

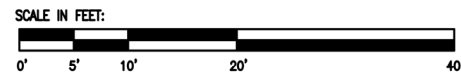
Smart Play
(2-5 years)
Max Fall Height: 60 inches

5-12 AREA

TOTAL ELEVATED PLAY COMPONENTS	17		
TOTAL ELEVATED COMPONENTS ACCESSIBLE BY RAMP	0	REQUIRED	0
TOTAL ELEVATED COMPONENTS ACCESSIBLE BY TRANSFER	14	REQUIRED	9
TOTAL ACCESSIBLE GROUND LEVEL COMPONENTS SHOWN	20	REQUIRED	6
TOTAL DIFFERENT TYPES OF GROUND LEVEL COMPONENTS	8	REQUIRED	8

2-5 AREA

TOTAL ELEVATED PLAY COMPONENTS	10		
TOTAL ELEVATED COMPONENTS ACCESSIBLE BY RAMP	0	REQUIRED	0
TOTAL ELEVATED COMPONENTS ACCESSIBLE BY TRANSFER	9	REQUIRED	5
TOTAL ACCESSIBLE GROUND LEVEL COMPONENTS SHOWN	8	REQUIRED	3
TOTAL DIFFERENT TYPES OF GROUND LEVEL COMPONENTS	8	REQUIRED	8



Poppleton Park
Birmingham, MI

Penchura, LLC
Lance Shipman

SYSTEM TYPE:
PlayBooster/Smart Play
DRAWING #:
PEN1194652-01-01





ls landscape structures

Poppleton Park

 Penchura

PEN1194652-01-01 • 8.29.2025

© 2025 Landscape Structures. All Rights Reserved



ls landscape structures

Poppleton Park

 Penchura

PEN1194652-01-01 • 8.29.2025

© 2025 Landscape Structures. All Rights Reserved



LS landscape structures

Poppleton Park

 Penchura

PEN1194652-01-01 • 8.29.2025

© 2025 Landscape Structures. All Rights Reserved



Poppleton Park



PEN1194652-01-01 • 8.29.2025

© 2025 Landscape Structures. All Rights Reserved



landscape structures

Poppleton Park

PEN1194652-01-01 • 8.29.2025

Penchura

© 2025 Landscape Structures. All Rights Reserved



lsr landscape
structures

Poppleton Park

 Penchura

PEN1194652-01-01 • 8.29.2025

© 2025 Landscape Structures. All Rights Reserved



landscape structures

Poppleton Park

 Penchura

PEN1194652-01-01 • 8.29.2025

© 2025 Landscape Structures. All Rights Reserved



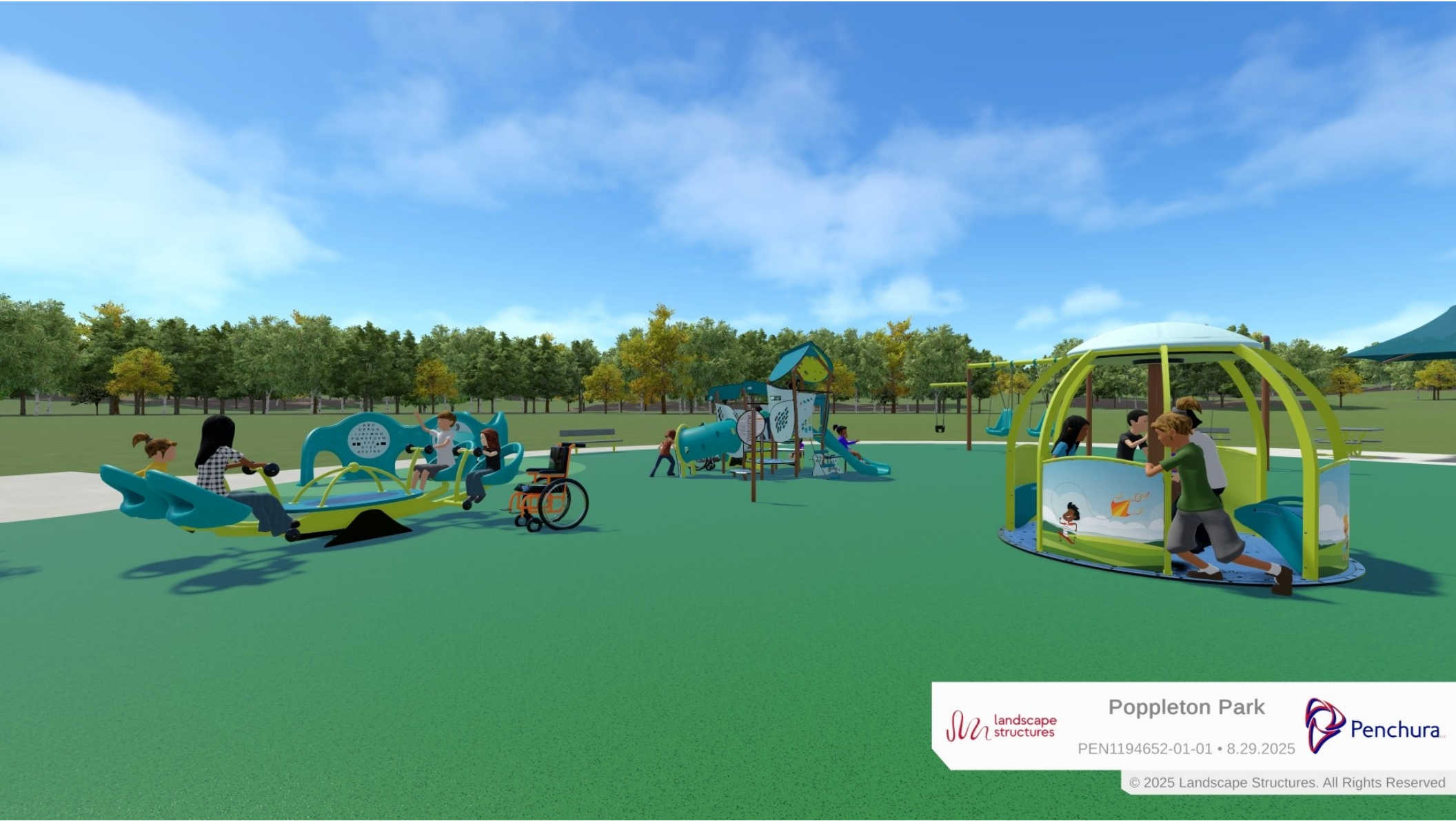
ls landscape
structures

Poppleton Park

 Penchura

PEN1194652-01-01 • 8.29.2025

© 2025 Landscape Structures. All Rights Reserved



LS landscape structures

Poppleton Park

 Penchura

PEN1194652-01-01 • 8.29.2025

© 2025 Landscape Structures. All Rights Reserved



ls landscape structures

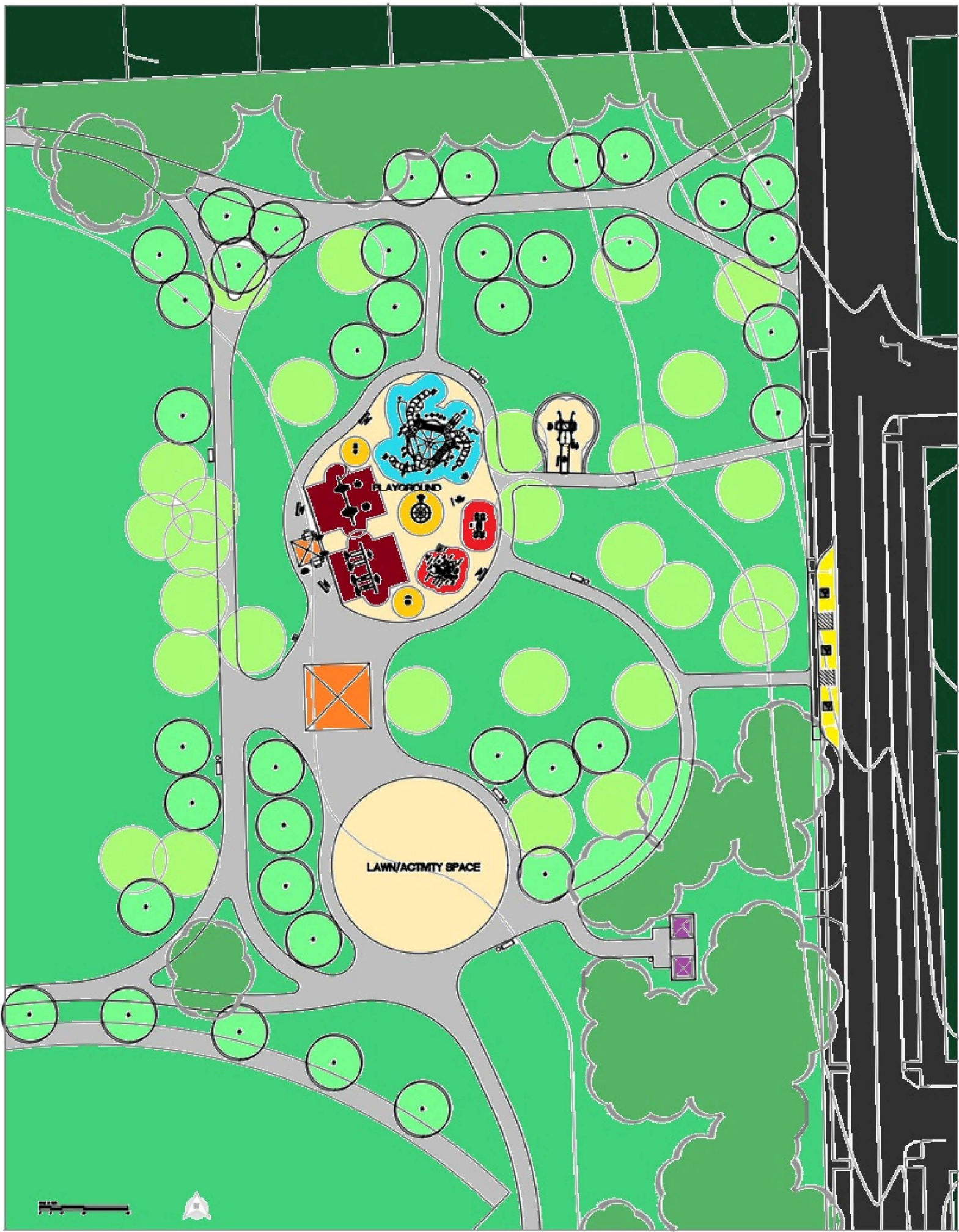
Poppleton Park

 Penchura









PEN1194652-01-01 • 8.29.2025

© 2025 Landscape Structures. All Rights Reserved

Initial Concept Plan & Playground Layout



LEGEND

-  EXISTING TREES
-  PROPOSED DECIDUOUS TREE
-  PROPOSED SHADE STRUCTURE
-  PROPOSED RESTROOM ENCLOSURE
-  PROPOSED PARK BENCH
-  PROPOSED PLAYGROUND BENCH
-  PROPOSED FOUNTAIN
-  PROPOSED RECEPTACLE

PLAYGROUND CONCEPT PLAN

PL-1



The play components identified on this plan are IPEMA certified. (Unless model number is preceded with *) The use and layout of these components conform to the requirements of ASTM F1487. To verify product certification, visit www.ipema.org

THIS PLAY AREA & PLAY EQUIPMENT IS DESIGNED FOR AGES 2-12 YEARS UNLESS OTHERWISE NOTED ON PLAN.

IT IS THE MANUFACTURERS OPINION THAT THIS PLAY AREA DOES CONFORM TO THE A.D.A. ACCESSIBILITY STANDARDS, ASSUMING AN ACCESSIBLE PROTECTIVE SURFACING IS PROVIDED, AS INDICATED, OR WITHIN THE ENTIRE USE ZONE.

THIS CONCEPTUAL PLAN WAS BASED ON INFORMATION AVAILABLE TO US. PRIOR TO CONSTRUCTION, DETAILED SITE INFORMATION INCLUDING SITE DIMENSIONS, TOPOGRAPHY EXISTING UTILITIES, SOIL CONDITIONS, AND DRAINAGE SOLUTIONS SHOULD BE OBTAINED, EVALUATED, & UTILIZED IN THE FINAL DESIGN. PLEASE VERIFY ALL DIMENSIONS OF PLAY AREA, SIZE, ORIENTATION, AND LOCATION OF ALL EXISTING UTILITIES, EQUIPMENT, AND SITE FURNISHINGS PRIOR TO ORDERING. SLIDES SHOULD NOT FACE THE HOT AFTERNOON SUN.

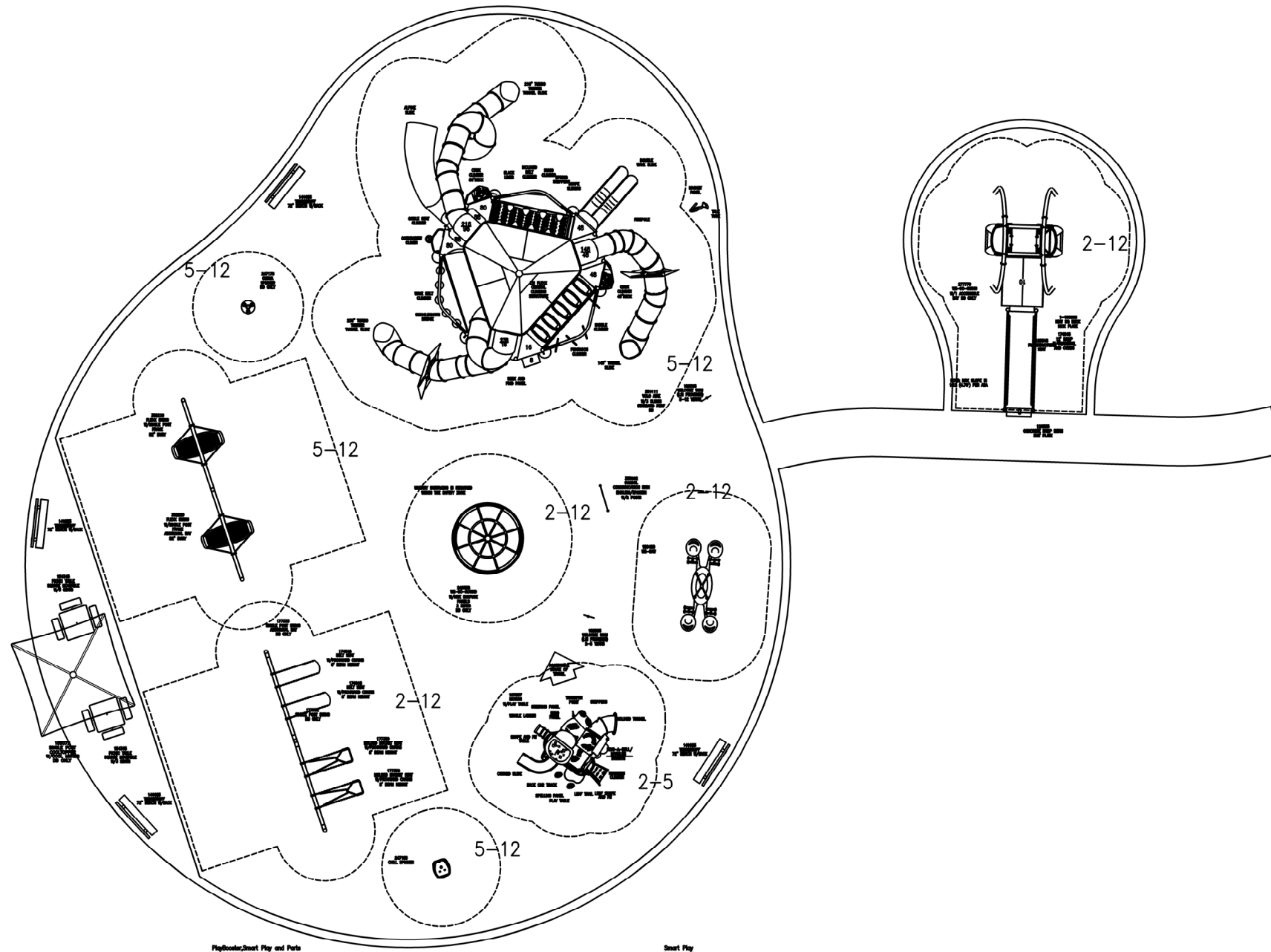
CHOOSE A PROTECTIVE SURFACING MATERIAL THAT HAS A CRITICAL HEIGHT VALUE TO MEET THE MAXIMUM FALL HEIGHT FOR THE EQUIPMENT (REF. ASTM F1487 STANDARD CONSUMER SAFETY PERFORMANCE SPECIFICATION FOR PLAYGROUND EQUIPMENT FOR PUBLIC USE, SECTION 8 CURRENT REVISION). THE SUBSURFACE MUST BE WELL DRAINED. IF THE SOIL DOES NOT DRAIN NATURALLY IT MUST BE TILED OR SLOPED 1/8" TO 1/4" PER FOOT TO A STORM SEWER OR A TRENCH DRAIN.

AREA OF ACCESSIBLE/PROTECTIVE SURFACING (TURF SUGGESTED)
8,281 SF

DESIGNED BY:
AH

COPYRIGHT: 3/11/2025
LANDSCAPE STRUCTURES, INC.
601 7th STREET SOUTH - P.O. BOX 198
DELANO, MINNESOTA 55328
PH: 1-800-328-0035 FAX: 1-763-972-6091

Date	Previous Drawing #	Initials



PlayBooster/Smart Play and Parts
(5-12 years)
Max. Fall Height: 102 inches

Smart Play
(2-5 years)
Max. Fall Height: 54 inches

5-12 AREA

TOTAL ELEVATED PLAY COMPONENTS	17		
TOTAL ELEVATED COMPONENTS ACCESSIBLE BY RAMP	0	REQUIRED	0
TOTAL ELEVATED COMPONENTS ACCESSIBLE BY TRANSFER	14	REQUIRED	9
TOTAL ACCESSIBLE GROUND LEVEL COMPONENTS SHOWN	16	REQUIRED	6
TOTAL DIFFERENT TYPES OF GROUND LEVEL COMPONENTS	8	REQUIRED	8

2-5 AREA

TOTAL ELEVATED PLAY COMPONENTS	10		
TOTAL ELEVATED COMPONENTS ACCESSIBLE BY RAMP	0	REQUIRED	0
TOTAL ELEVATED COMPONENTS ACCESSIBLE BY TRANSFER	9	REQUIRED	5
TOTAL ACCESSIBLE GROUND LEVEL COMPONENTS SHOWN	4	REQUIRED	3
TOTAL DIFFERENT TYPES OF GROUND LEVEL COMPONENTS	4	REQUIRED	4



Poppleton Park
Birmingham, MI

Penchura, LLC
Lance Shipman

SYSTEM TYPE:
PlayBooster/Smart Play
DRAWING #:
PEN1194652-01



Poppleton Park Playground Survey

SURVEY RESPONSE REPORT

26 July 2025 - 24 August 2025

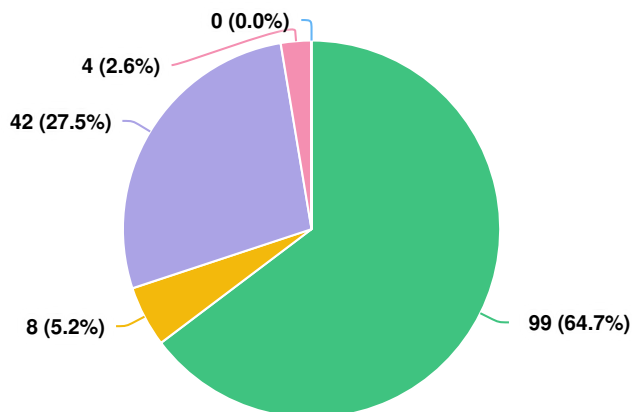
PROJECT NAME:

Poppleton Park Playground Improvements



SURVEY QUESTIONS

Q1 | How do you typically get to Poppleton Park Playground?

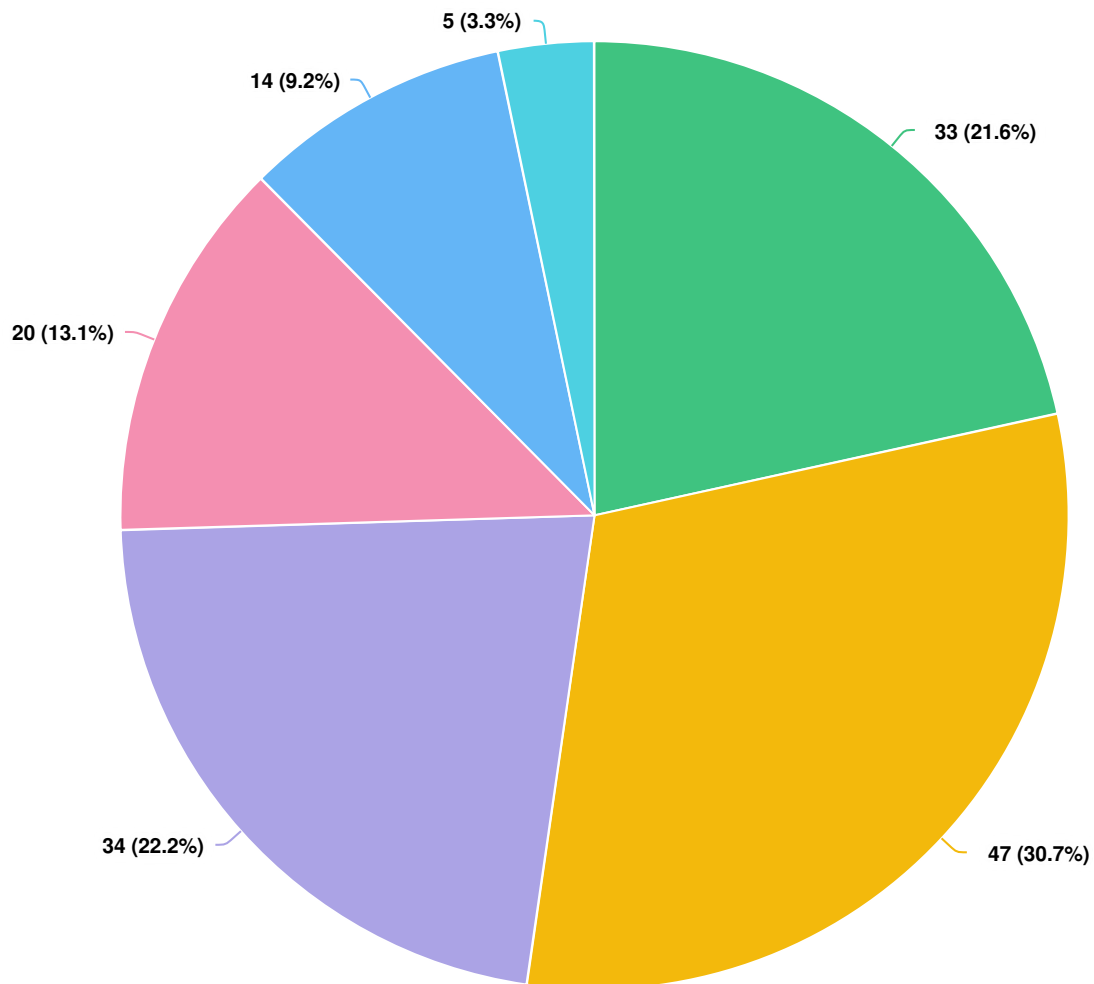


Question options

- Walk
- Bike
- Drive
- Other (please specify)
- Public Transportation

Optional question (153 response(s), 0 skipped)
Question type: Radio Button Question

Q2 How often do you visit Poppleton Park Playground?

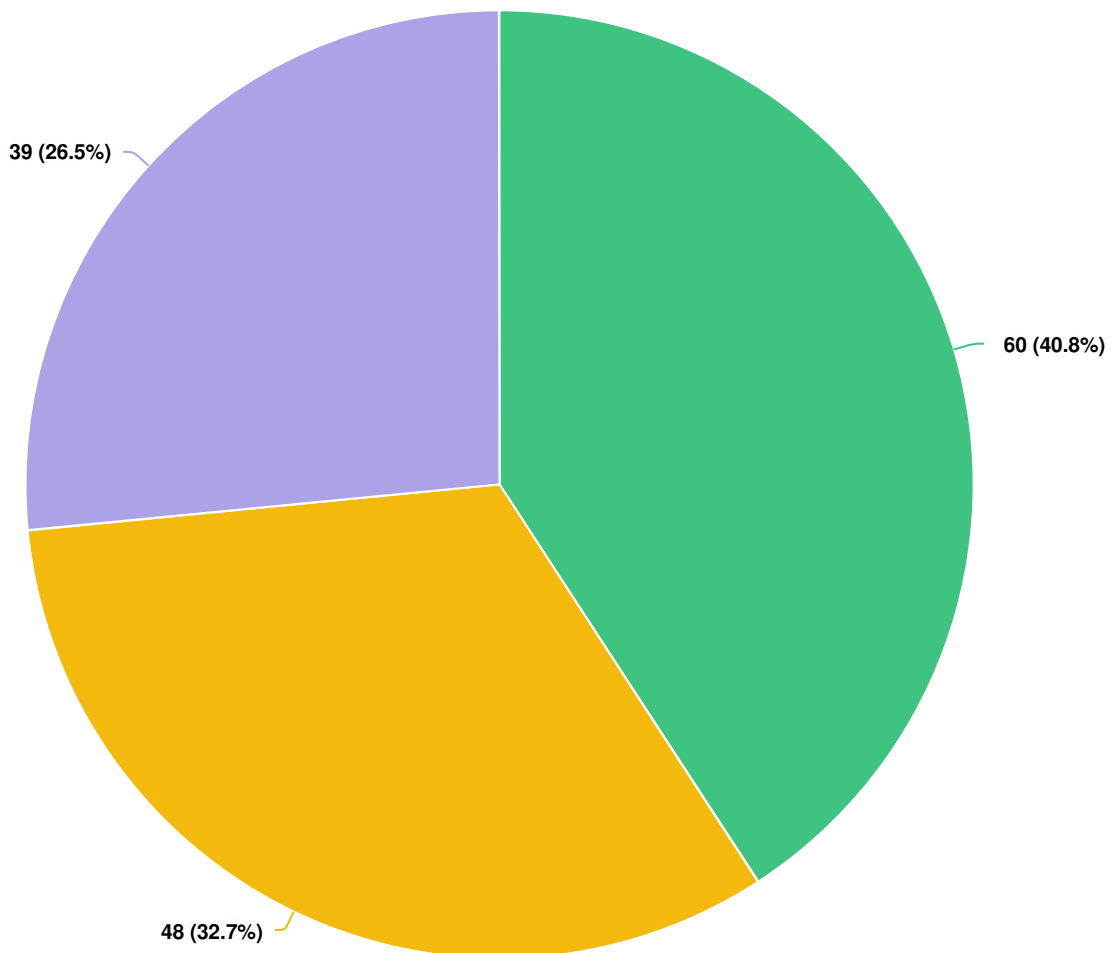


Question options

● Daily ● Weekly ● Monthly ● Yearly ● Less than 1 time per year ● N/A

Optional question (153 response(s), 0 skipped)
Question type: Radio Button Question

Q3 | What is the age of the playground user in your household, or if not in your household, the age of the playground user while visiting?



Question options

- 0-5 years
- 6-12 years
- 13+

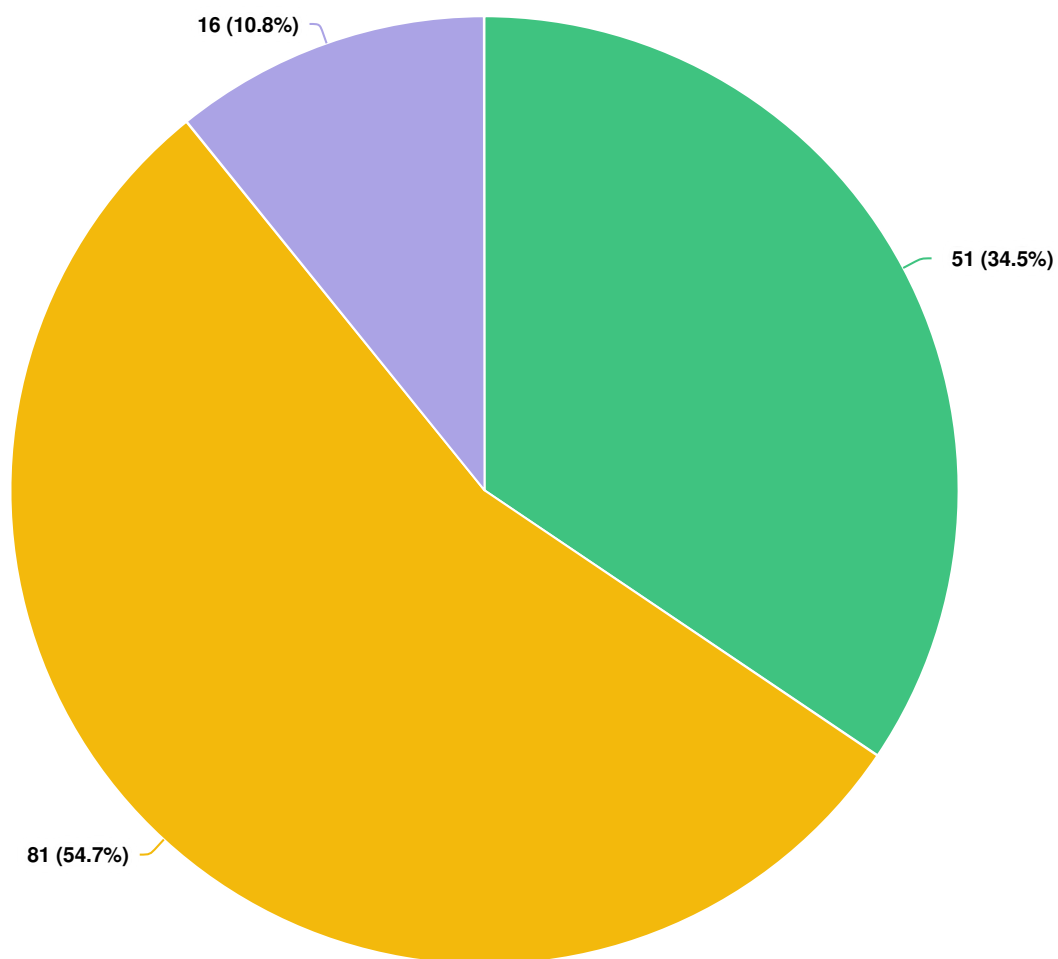
Optional question (147 response(s), 6 skipped)
Question type: Radio Button Question

Q4 | What types of features would you like to see at the new playground? Please rank from highest to lowest (1 highest, 7 lowest)

OPTIONS	AVG. RANK
Swings	2.68
Slides	3.14
Climbing	3.29
Spinners/Bouncers	4.35
Accessible surfacing (i.e. artificial turf or poured in place (PIP) rubber)	4.45
Accessible play elements	4.50
Sandboxes	4.80

*Optional question (146 response(s), 7 skipped)
Question type: Ranking Question*

Q5 What do you think about the concept renderings?



Question options

- I like it!
- I like it, but I would change something.
- I don't like it.

*Optional question (148 response(s), 5 skipped)
Question type: Radio Button Question*

Q6 | If the playground renderings do not appeal to you, please let us know why:

jfallucc1

8/07/2025 04:45 PM

It is to modern appearing.

Ephillips

8/07/2025 05:34 PM

I think the structure is too high. Would like to see more play equipment, not just one large and one small. Would also like a walking/running/biking path around the park for safe riding for kids

kpcleary

8/08/2025 08:57 AM

Not enough regular swings. I don't see the toddler bucket swings which are some of the most used swings from my regular viewing. I don't like the path which really detracts from the natural look and feel and will seemingly require a lot of maintenance, especially in the winter. The structure is way too tall. Not only is that distracting to the eye, if you were trying to design something (attractive nuisance) to entice kids to climb and take a 30-foot leap, this is it.

jqseedy

8/08/2025 12:19 PM

I am concerned that this focus on inclusion to those with different abilities is actually excluding the vast majority of park utilizers. Poppleton Park is by location and nature a neighborhood park. Children need some element of risk and adventure in their play, and this park has sanitized that to the degree that my own children (ages 6 and 8) are unlikely to use it. I wholeheartedly agree on having inclusive elements but also don't think the focus should be on inclusion to the point of exclusion. I am very concerned that there are special interests influencing this - as represented by the presence of people from other cities, not paying taxes in Birmingham, weighing in on our park plans.

Rosie61

8/09/2025 09:40 AM

I take my little grandchildren ages 2 and 3. This doesn't look like something for small children.

Groux

8/09/2025 12:17 PM

The tall structure is too large

judgenot6

8/10/2025 11:12 AM

Garish colors; obnoxious look; not user friendly for those over the age of 6. Trees too small; not enough shade (the existing playground has nice shade); The slide structure looks like something from outer space and the colors do not blend into the environment at all. This is, however, typical of all "improvements" the city has made to our parks.

SAWilson

8/10/2025 06:57 PM

The colors are too loud, they should be natural colors and blend into the park environment and the neighborhood

Bham

8/12/2025 03:54 AM

I don't like it or not like it, I can't even see it because these pictures are way too small and it seems very high level without the ability to zoom over to specific things like the play structure, etc... so it's impossible to really say anything outside of it looks very sterile and where are the big trees that need to stay for the shade/wind break they provide?

johnrogers

8/20/2025 05:25 AM

First of all, there is a young man in the neighborhood who uses the tall swings every single day. This seems to be a big part of his life. Since it seems like accessibility is a primary objective, don't punish this young man with a developmental disorder and his lovely family. He needs a 10 foot swing. The swings and the sandbox are by far the most used items in the park. We need more swings in addition to baby swings, I think it would be simple to make a sandbox accessible by adding an elevated sandbox element, like the one at booth park, next to a ground level sandbox. I like the accessible swings, but we many not need so many. The accessible swing at booth park gets little use.

elliebadge

8/21/2025 01:11 PM

Horribly ugly and way too modern for what this park is supposed to be. The small, homey feel that it currently has is what attracts people to the park. It feels different than the other parks around Birmingham that look like this - Poppleton is unique and old-school. Poppleton Park also does not attract that many people (it's mostly residents of the neighborhood) so the need for this big/spread out of a park is just not there.

falloffthe cliff

8/21/2025 05:41 PM

Structure is overkill for a playground. Comments at the last meeting centered around more traditional play such as swings, sandboxes and monkey bars. The proposed structure does not fit with the neighborhood. at 20-30 feet high it will be taller than many of the surrounding homes. After the novelty wears off I'm skeptical it will get much use. Tried and true playground activities are inclusive and fun.

Sasa

8/21/2025 06:21 PM

A 30ft structure is not appropriate in a park near homes some of which are simple two story buildings. It further distracts from all the open green space behind the playground. Hopefully the park will not be filled with winding cement walkways 8 feet wide! The above rendering does not provide an appropriate scale for height of structure, width of walkways and existing trees. It also lacks the

restroom structure which makes the renderings a bit deceiving.

Redding

8/21/2025 09:08 PM

1- Needs shade, it is important for comfort and to help with global warming. Don't cut down the existing mature trees, be wise and plan around them, I only see a few being saved. Our city has a serious problem with this, mature shade trees are being cut down and if replaced they are replaced with inferior specimens with little or no shade because the deciduous trees in vogue are columnar. 2-This is a "kiddie" playground, families have older kids too that have their own needs. What about a Ninja course? Think about the 8-11 year old kids that have to tag along with their siblings. 3- It needs a really good splash pad, or better yet a water area that appeals to all ages. 4- Please use more natural materials, this concept is mostly plastic. 5- This is not very imaginative, it is something you can find in a fancy catalog. Kids should play in nature, not artificial turf, and when they fall in grass they don't get scratched. 6- Not enough swings. The space can accommodate several banks of swings,

AnnaK

8/22/2025 07:20 PM

The main play structure appears very tall. Id rather have shorter elements connected with bridges. Easier for parent to access. Also I would like more swings including traditional baby swings.

Optional question (15 response(s), 138 skipped)

Question type: Essay Question

Q7 | If there's something you would change about the renderings, please tell us below:

SKupczyk

8/05/2025 04:18 PM

More shade, misting area/water feature, would love a real bathroom, swinging bench

JBhm

8/07/2025 02:39 PM

The structure should be painted Birmingham green, similar to the rendering. Definitely not red and yellow that will attract Woodward traffic. I believe the structure is 30 feet tall. It does not look that tall in the rendering. Is there a similar structure at a local park that I can look at? Is the structure at Innovation Hills the height that we will be installing?

KathleenTigheKriel

8/07/2025 04:01 PM

That huge structure is way too big and seems dangerous for small kids. I like the row of trees separating the playground to the rest of the open park.

klh

8/08/2025 03:43 AM

There needs to be taller swings for older kids/teens/adults. Swinging is fun and great exercise for everyone. Creating fun "workout areas" for teens and adults encourages inclusivity for the park to be enjoyed by all age groups. Also it's great to have elements where both the parent and child can play alongside each other — swings, monkey bars are perfect for that.

Kathleen McInerney

8/08/2025 09:06 AM

I LOVE THE CONCEPT OF MAKING POPPLETON PARK AN ALL INCLUSIVE PLAY AREA. HOWEVER, I FEEL THIS RENDERING OF THE MAIN STRUCTURE LOOKS TOO TALL AND I DON'T LIKE THE COLOR OF IT. BOTH BOOTH PARK AND SHANE PARK HAVE STRUCTURES THAT BLEND RIGHT INTO THEIR ENVIRONMENTS WITHOUT ALL OF THE DATED COLORS. I WAS AT THE MEETING AND VOICED MY OPINION THAT I THINK IT SHOULD BLEND IN WITH THE PARK (BIRMINGHAM GREEN AND NATURAL AND NOT LOOK LIKE AN AMUSEMENT PARK.

StillJAB

8/08/2025 12:08 PM

Most parks lack shade. This would be a good opportunity to try shade elements. A good example is the park at Burton Elementary, Huntington Woods.

tserra

8/08/2025 12:09 PM

More shade. Also, how would those longer enclosed slide get cleaned?

auntcricket

8/08/2025 12:17 PM

Spread it out. More shade. Bathrooms

jcanvasser

8/08/2025 12:24 PM

Needs more play features.

achristine

8/08/2025 12:31 PM

This park looks like it's for much older kids. I'd love to see something for our littlest residents -crawlers and just learned to walkers!

Leni

8/08/2025 01:04 PM

Not near homes the walkway

chrkojaian

8/08/2025 01:12 PM

More swings.

JNienberg

8/08/2025 01:12 PM

More regular swings, more climbing. No spinny things!

JML

8/08/2025 01:13 PM

1. It needs to be shadier. What I love most about Poppleton is how shady the playground is. Please keep all of the trees and maybe add more. SHADE IS KEY. 2. Not enough "big kid" swings. Only 2 is not enough. 3. I like the climbing thing that the current Poppleton park has- we should keep that or have something similar. 4. Have some more picnic tables in the shade 5. There is no sandbox or flatter surface play

avhughes1

8/08/2025 01:36 PM

You need more shade. The adults need shade to watch their children.

Bookerwyle

8/08/2025 01:40 PM

More swings. Regular swings and baby swings.

Resident1

8/08/2025 01:49 PM

Slide looks very tall. One level is sufficient.

SandraT

8/08/2025 02:12 PM

More shade! Climate change is going to make our summers hotter, more shade in the play area is absolutely crucial.

Ewesman883

8/08/2025 02:35 PM

It doesn't need to be so tall, it could have more ramps to be accessible

xhippieboy

8/08/2025 03:02 PM

No articial grass

lewis0626

8/08/2025 04:05 PM

Swings for 12+ and up. Playground concept is beautiful and of course designed inclusively for young children (as it should be), however swings that can support older kids and individuals on the autism spectrum that enjoy therapeutic swinging would really round out the goal for inclusion and could be highlighted as another component to this lovely project.

amccarley

8/08/2025 05:02 PM

Not a lot of platforms for children to play and be creative on once they get to the top

whitak38

8/08/2025 05:19 PM

More equipment

murph313

8/08/2025 05:38 PM

Seems too congested for the space and the big kid area looks like not many can play. I would recommend looking at beacon park or innovation park for better recommendations. They have awesome zip lines and swings in Berkley that are all access.

naliaal

8/08/2025 06:51 PM

Largest height swing we are able to get to accommodate a wide variety of users and maintain accessibility for all sizes. We currently have a neurodivergent child that uses the highest swings multiple times per day. Please continue to make the park accessible for him. Sandbox for younger children to promote continued use of imaginative and sensory play. This is a must and very popular at Poppleton Park. Additional shaded seating. Maintaining as much of the structure as possible to continue to be in shaded areas of the park. Will be necessary to enjoy use of the park with increasing hot summers. Monkey bars for users to be incorporated in one of the play structures. This feature is very popular and we would like to continue to have this at the park.

Yaxie

8/08/2025 07:04 PM

A climbing wall or fake stones would be good.

drumple

8/08/2025 07:40 PM

More shade

vandoja

8/08/2025 08:36 PM

Would love some more shade options and more seating/tables.

Jack48009

8/09/2025 04:40 AM

make the colors blend with the environment - Birmingham green

Heidi G.

8/09/2025 05:26 AM

the large fort like box on top is an eyesore, especially for the neighbors who look out at the park

slbrown

8/09/2025 05:42 AM

Bigger and more

lizmfrat

8/09/2025 08:24 AM

More shade

dhseidman

8/09/2025 09:28 AM

I love that this park will be inclusive and accessible for those individuals in our community with physical disabilities. That being said, if the goal is to serve a larger amount of the population than the

current park does, I don't believe this design accomplishes that. While it's SO important to provide accessible spaces like this, my kids (ages 6 and 8) would not come to this park for very long. Research shows that risk-taking in play is not only natural but essential for child development. It helps kids build confidence, develop problem-solving skills, improve coordination, and learn to assess danger. Over-sanitizing playgrounds or eliminating all risk can actually hinder resilience and emotional growth.

vs

8/09/2025 09:48 AM

Keep the 12+ swings

Bhamocks

8/09/2025 10:18 AM

I like it, but I would like to advocate for some adult swings and a bench swing. The park should accommodate multiple abilities and also the Birmingham residents with autism that may enjoy swinging when they outgrow the playground structure.

LaurenAbbey

8/09/2025 10:36 AM

Add 12+ swings and bench swing back in so that all ages can enjoy the park. Both are vital to the park being usable for all.

KDB

8/09/2025 12:07 PM

Please, please, please include swings for older kids/adults. And bring back the swinging bench seat. Many ages enjoy swinging!!

Maggie

8/09/2025 12:53 PM

Swings for kids 13+ and adults

elg

8/09/2025 01:50 PM

There are no young adult or older kiddo swings and our neighbor is a young man on the Autism spectrum that is able to be independent walking to the park and swinging each day. This is very important to us and our inclusive and supportive community.

Ewilde

8/09/2025 05:02 PM

Adult swings, benefits all

JRB

8/09/2025 06:34 PM

Absolutely need baby swings - SO many young families in this neighborhood. And Swings for older kids (12+), traditional climber like monkey bars/geodome. Spinners don't get much use at Adams park, Please do not cut down mature trees!! These mark the park so special and keep the historic charm of the neighborhood. More than 2 picnic tables. This is a very well used park. Add shaded areas as much as possible. If theres only 1 way up/down in the large play structure, I could see it getting jammed with kids. Something with

multiple routes is nice.

Codell75

8/09/2025 08:04 PM

Equipment available for older children and children on the spectrum. These individuals are currently some of the biggest users of the current equipment and it is important to consider their needs.

Melissa B

8/09/2025 08:37 PM

It looks like it has an accessible surface but not accessible play structures/elements. I like that Adams park has a water bottle refill station, chargers and covered sitting areas. They would be a nice addition to Poppleton. Please make sure that the swings accommodate "big kids" too. I know that I see at least one older kid/teen who I believe that has ASD who regularly uses the swings there. I also love the large swing that's there now. (Great when the grandparents visit)

famouszero

8/09/2025 10:32 PM

More seating for adults near center to few children

NCGreen

8/10/2025 05:47 AM

This is a beautiful design and truly does think about many things that will revitalize the space - thank you for that! Two things that are missing - there was a beautiful old fashioned bench swing that we used as a family and my (late) father used to swing on with our girls. The memories and beautiful times spent on that or getting the kids to sleep for their nap on that bench are numerous. I would love a new version of that to be put in place. 2. There is a neighborhood boy who uses the larger swings for self regulation as he is autistic. His swinging ability is truly incredible and watching him swing and getting to speak to my children about the wonders of him has been an incredible learning opportunity. I don't see any swings geared to older children or adults for that matter (who bring their children to the park.....) so they can swing. This is an incredibly large park and I don't see the harm in adding back one small area that features 12+ swings or a newly imagined bench swing for families. Thank you for your consideration of this request!

MM

8/10/2025 05:53 AM

It would be great if you added equipment adults could use to maintain fitness and also keep the current swing for 12+

South Poppleton Neighbor

8/10/2025 07:09 AM

The plan is nice; however, there is space for more playground equipment. For being a community park, this looks sparse. A 12' tall swing needs to be added older children and adults. Adams Park only has swings for younger children. Poppleton Park needs to continue to fill this need for the older children and adults. Fully

support a walking path around the park, and the buffer of trees between the homes on the park and the walking path. I also suggest the use of sail covers to give more shade to the play area.

Murphydog#2!
8/10/2025 08:28 AM

More umbrella shade areas with more swings

Leebartoshuk
8/10/2025 10:58 AM

Please add proper adult swings and enough of them at least fourwe need to do underdogs . Nice wide sidewalks like at Barnum . Leave the big shade trees ...no shade at Adam's Park ..this is a problem And don't forget the swings ...thanks

JB
8/10/2025 04:47 PM

Add more shade and picnic tables

gnifr
8/11/2025 11:43 AM

Regular swings for adults (we have a neighborhood resident with special needs that uses these adult swings); bench swings, basketball hoops (not a full court). This structure seems too tall, not necessary for the size of this neighborhood park.

leeross211
8/11/2025 12:17 PM

"Bucket swings" for little ones. Sandbox addition. Taller swings for bigger kids. You will never make everybody happy but these three items were echoed by many at the recent feedback meeting. Very nice. Excited/eager for this improvement.

KatyD
8/11/2025 06:14 PM

As someone who lives in Poppleton and has been using the playground for years, I like that the layout now has two playgrounds for younger and older kids. I would separate out the ages so that there are two playgrounds for two separate age groups. Also, bring back the wooden swing! We used to swing there as a family.

kramkels
8/11/2025 08:19 PM

Please add area for adult/older children swings.

amluedtke
8/12/2025 04:49 PM

Shade

rdbrittain
8/13/2025 07:32 AM

More shade!!

shadonati

Basketball court Pickleball courts

8/13/2025 12:53 PM

Sarahmockeridge

8/13/2025 01:56 PM

More shade umbrellas! Swings for older kids (13+) Our household has children ranging from 4-14 years of age. Water fountain If sandbox, shaded!

Catdubois

8/14/2025 03:47 AM

More searing in the shade, for both caregivers and for families enjoying a snack or meal, would be great. Usually we are at the park long enough to want to take a break, and no Birmingham parks have kid friendly seating at tables for snack and meal times.

grannyh

8/15/2025 01:00 PM

toddler places not as tall

Shain

8/21/2025 12:09 PM

Add tall swings and a sandbox. Make slide shorter and longer so parents can watch their children.

Gabriellerakitin

8/21/2025 05:20 PM

I would add things for older kids like workout areas or jungle gym ninja warrior type activities

angiespickler

8/21/2025 05:27 PM

If there is an infant area, having it covered would be amazing. No other parks have it and I would use this park more than my normal if that happened.

unaik

8/21/2025 07:13 PM

Needs bucket swings for babies/toddlers and swings for bigger kids, they are currently many different swings and they always in use by various ages, we need to keep that inclusivity

change.1..

8/21/2025 07:15 PM

I think big swings like the ones currently at the park should still be part of the plan. I also think the location is perfect for a splash pad and a picnic pavilion. Especially if there is already a plan to bring plumbing to the park.

drvandom

8/22/2025 06:14 AM

Having a new baby we realize a lot of the play features don't have shade, the current "baby" swings in the existing play area are always in direct sunlight. Keeping shade/play structure temperatures in mind is a key element that should be considered. The rendering of one of the play structures also looks way to tall, part of what makes poppleton park so attractive is not having a "theme park" type atmosphere of a play structures. Would love to see little picnic areas

off to the side a bit away from the play structures for families to gather at, just nice benches with simple landscaping around them that offer shade. There are TONS, of dog walkers that pass by this park daily. Would love to see the city keep a disposal area and offer doggie bags like they already do, but maybe not on the main path in and out of the play area? The sidewalk entering the play area has a trash can that is pretty much exclusively used for dog waste and is always swarming with flies.

JenB

8/22/2025 08:35 AM

We would like to make sure a set of 4 belt swings for ages 12+ is included, as we currently have. Those swings are used *daily* by young adults in our neighborhood, especially those on the autism spectrum. To be a truly inclusive park, we need to include our young adults as well as parents and grandparents who swing along with their children. It would be a huge loss for our neighborhood to lose this swing set. The equipment should not only cater to very young children.

Jacks1212

8/22/2025 09:04 AM

More swings for older kids and baby set swings

Swing happy

8/22/2025 09:08 AM

Please make sure that there is a 12 plus swing. It's very important to many kids and keeps them out of trouble.

PPresident

8/22/2025 09:52 AM

We have a 12 + autistic child in neighborhood who visits the park daily to swing. That's it. He is enthusiastic about regular use of the swings, its and outlet. Ive seen him for years and marveled at his tenacity on the swing set. It' only right that he and those who come after him be accommodated in this particular plan and budget. He needs and other big kids need a swing set. I am a 35 year resident of Poppleton Park and 40 year resident of Bham. Accommodate the autistic kid, Find a place for the adult swing. Neil Miller
neil@neilmillerlaw.com

Maggiiegf

8/22/2025 10:20 AM

Make it more younger kid friendly. And add a sandbox

livelovelaugh

8/22/2025 10:34 AM

Scale of propped play structure is fantastic on many levels, however, the height @ 3 stories seems excessive. Is there another height option? Safety concerns, asthetics (choose colors similar to Adams Park), sight lines while watching kids play can be worrisome (all tunnel slides are solid material color vs. just the few "windows" I think when the neighborhood population sees the scale & height of

this particular model, you will get push back. Current rendering does not reflect actual scope of height & size.

user-name-change.

8/22/2025 10:39 AM

More swings, add picnic tables

Singram

8/22/2025 11:49 AM

Add big kid/adult swings

Appel

8/22/2025 01:32 PM

Please consider adding more swings for older kids. This park is heavily used by the surrounding neighborhoods. Parents like to swing alongside their kids and older kids enjoy swings too.

Ehill

8/22/2025 04:45 PM

Needs bucket swings. There's so many babies and toddlers that go to this park daily that wait in line to use. All size swings! We don't need the big chair swing. The smaller slide set should be a lot bigger. Ditch the interactives - the kids want toddler age appropriate climbing and more slides. The spiny thing never gets used at Adam's park. Take that out

Awoerner

8/22/2025 04:48 PM

More accessible swings

erilai

8/22/2025 05:14 PM

Please keep the "big" swings that are currently at the park

saraostrowski9

8/23/2025 03:24 AM

I live in this neighborhood with my soon to be 4 kids 6 and under. We are there most every day. I don't see any baby swings. Also, the 12+ swings currently at the park serve our community of older kids that benefit from swinging and removing those is disappointing. I also hope the park remains nature focused. The structure in the middle looks so big and artificial. I love this old school park that allows my kids to run from area to area and use their imagination / play independently well and with others rather than cramming in a few play options all on top of each other.

Mlim

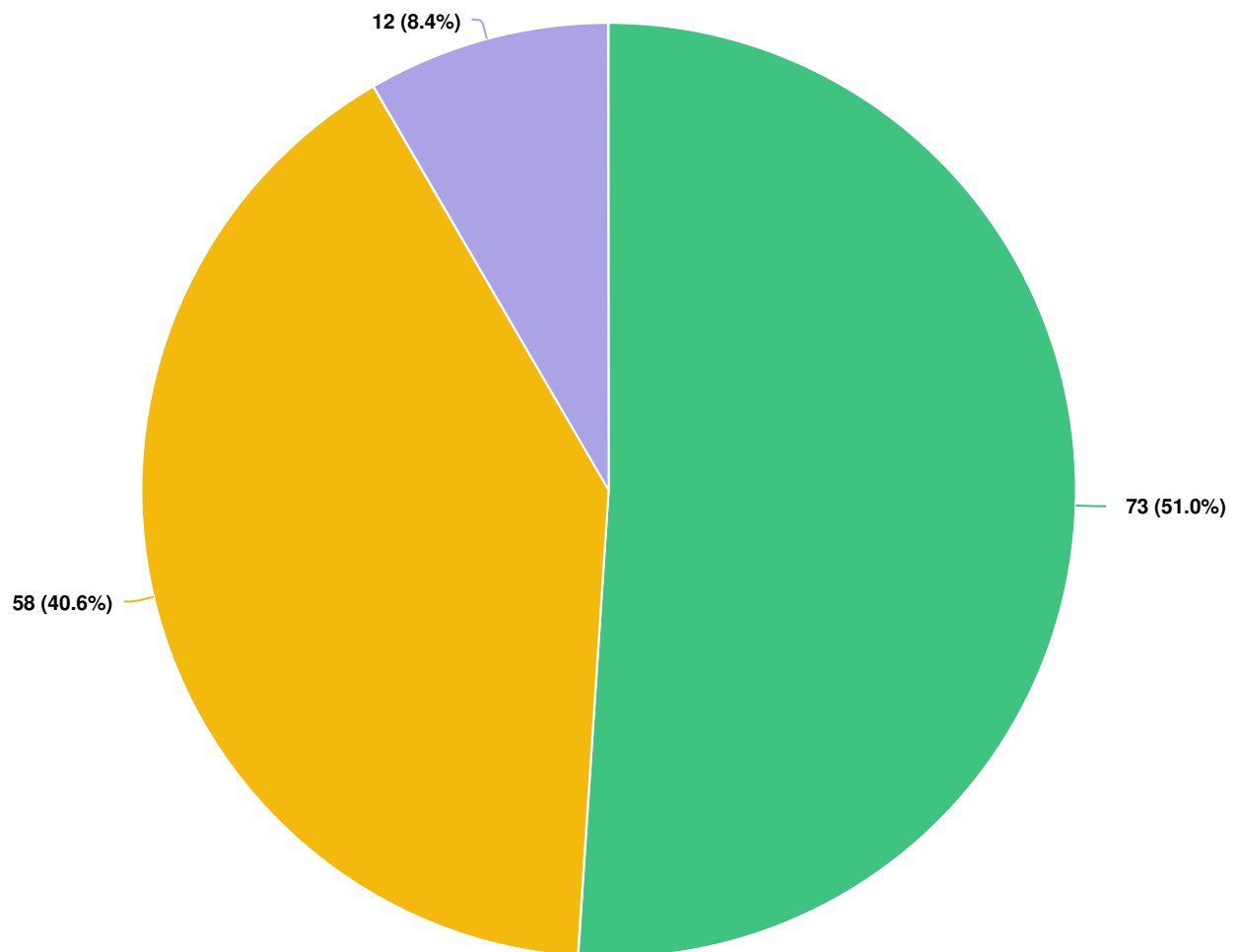
8/23/2025 08:48 AM

What I love about the current park is that the majority of the structure is shaded. Would love to see that here. My girls also love the monkey bars, I'm not sure if I see it in this plan. The structure for the toddler age group also seems a lot smaller than the current one.

Optional question (80 response(s), 73 skipped)

Question type: Essay Question

Q8 | Poppleton Park Playground Concept Plan



Question options

- I like it!
- I like it, but I would change something.
- I don't like it.

Optional question (143 response(s), 10 skipped)
Question type: Radio Button Question

Q9 | If there's something you would change about the Concept Plan, please tell us below:

nmcintosh

8/06/2025 03:53 PM

Add spaces for adults without children, such as Milford Central Park's swinging benches, Shain Park's cafe-style seating, and pollinator friendly garden zones

KathleenTigheKriel

8/07/2025 04:01 PM

Unsure on the bathroom concept as we already have homeless people living in the woods by the park near Woodward. Again huge structure in the middle is way too high.

jfallucc1

8/07/2025 04:45 PM

Eliminate the bathroom

Ephillips

8/07/2025 05:34 PM

I think we already have a lot of trees so I would spend that money on something useful. I like the bathroom and fountain addition. A small splash pad would be nice for the summer and maybe a flat soccer field

klh

8/08/2025 03:43 AM

There needs to be a couple of elements that teens/adults can enjoy. Preteens and teenagers in the neighborhood still want to go to the park. A neighborhood park encourages the community regardless of age to get out and put down the technology:)

Kathleen McInerney

8/08/2025 09:06 AM

THE SCALE AND THE COLOR.

sjkilleen

8/08/2025 12:06 PM

Shade , suns too intense for there not to be shade for the kids to play under / where is the water fountain?

Leni

8/08/2025 01:04 PM

Don't like the walkway

JML

8/08/2025 01:13 PM

Is the baseball field still there? Please keep it! Please add more park picnic tables in the shade.

avhughes1

8/08/2025 01:36 PM

More shade.

Bookerwyle

More swings. Also are there benches and picnic tables?

8/08/2025 01:40 PM

Resident1

8/08/2025 01:49 PM

Are there sufficient trees around porta potty structure to blend in from street.

Ewesman883

8/08/2025 02:35 PM

More shade would be great

lewis0626

8/08/2025 04:05 PM

See note below.

whitak38

8/08/2025 05:19 PM

Basketball court

murph313

8/08/2025 05:38 PM

Make sure the baby area is in shade, current swings are in direct sunlight.

Eka

8/08/2025 06:44 PM

need a roofed structure for protection against sun or rain

naliaal

8/08/2025 06:51 PM

Fountain and art sculptures.

vandoja

8/08/2025 08:36 PM

Would love to see a basketball court added. Either in this area or over by the tennis courts.

Heidi G.

8/09/2025 05:26 AM

We do not want a picnic shelter at Poppleton - there is not enough parking to support this, and the park is in the middle of a neighborhood. There is a shelter in the park next to Springdale Golf Course, which has a large parking lot. There are several parks in Birmingham and each park does not have to be the same. Poppleton Park is known for its green space and it is in the middle of a neighborhood where the residents walk or ride their bikes to the park.

lizmfrat

8/09/2025 08:24 AM

More shade/covered areas

dhseidman

8/09/2025 09:28 AM

More shade and park benches. Please do NOT add any parking besides what is required for ADA accessibility. This is a park inside of a neighborhood - there is no reason to make this a destination for those outside of our city, ruining the neighborhood feel and

overcrowding our already overcrowded roads.

Bhamocks

8/09/2025 10:18 AM

It needs something for the 13+ kids to do. Like basketball or tether ball, etc.

KDB

8/09/2025 12:07 PM

I don't think we need so many hardscape meandering paths around the whole park. (Around the playground is fine.)

Groux

8/09/2025 12:17 PM

I would not want a restroom structure - maintain placement of a portable toilet seasonally

Wnsmom24

8/09/2025 12:41 PM

Please don't remove large healthy trees. Please don't crowd newly planted trees too close together. Have you considered The Throne portable restroom facilities? More sanitary, less visually unappealing.

elg

8/09/2025 01:50 PM

12 plus swings

JRB

8/09/2025 06:34 PM

Position the main play area under existing mature trees to maximize shade. Please do not cut down existing trees. More picnic tables.

Codell75

8/09/2025 08:04 PM

I would like to see a designated area for the older children and older teens and adults on the spectrum.

Melissa B

8/09/2025 08:37 PM

I want to make sure that we keep the tennis courts (not pickleball).

NCGreen

8/10/2025 05:47 AM

What I indicated above, and more tree or cover from the sun. Poppleton Park is incredible and can get VERY hot on a summer day, so large shade covering like they have in almost all parks in Florida would be great. At least over the very small child area.

South Poppleton Neighbor

8/10/2025 07:09 AM

As stated above, it seems sparse for the size of the property. A small splash pad could be added as "phase 2" or more equipment added in "phase 2". The landscaping at Adams Park is beautiful. Would suggest using the same landscape architect for this park - especially around the walking path. Side note, I do not see a sandbox in this plan. If there is, please put the water fountain far from the sandbox. The water fountain at Adams is near the sand box and it is constantly

full of sand. Parents use the dog bowl to wash their childrens feet.
Maybe a little foot wash spigot is needed by future sandboxes, but no water fountains or dog bowls!

Murphydog#2!
8/10/2025 08:28 AM

Have swings for teens who like to go there with friends

judgenot6
8/10/2025 11:12 AM

Too many pathways; a lot of trees but small - will take forever for them to provide shade. Not sure why we need a shade structure when there is natural shade already existing which is to be destroyed to build a shade structure? Also, concerned about the restroom facility; in case you are unaware, there are homeless people who regularly reside in the park overnight due to the facilities offered.

JB
8/10/2025 04:47 PM

More shade and seating/picnic benches

SAWilson
8/10/2025 06:57 PM

Less trees and substantially more lawn activity spaces. Let the kids play pickup soccer and football etc.

gnifr
8/11/2025 11:43 AM

It's already busy with parking/traffic on Oxford. I hope there is plenty of offstreet parking for the crowds that will be drawn to these features.

Davidson
8/11/2025 06:11 PM

Keep it simple and inexpensive

KatyD
8/11/2025 06:14 PM

I would have two playgrounds for two age groups, one younger and one older. My boys are teens now, but they still go on the swings and play on the older kid playscape.

rdbrittain
8/13/2025 07:32 AM

More shade!!

shadonati
8/13/2025 12:53 PM

More shaded areas

Catdubois
8/14/2025 03:47 AM

Please do not add permanent restrooms. Homeless people already live in the woods in the park and have monopolized the bench and picnic table near Woodward. Also, please add more shade structures with seating.

linsayreijmer

8/15/2025 12:50 PM

Add more shade

grannyh

8/15/2025 01:00 PM

more shade

Shain

8/21/2025 12:09 PM

Need tall swings for John and older children. Basketball for older children.

Gabriellerakitin

8/21/2025 05:20 PM

I would add things for older kids like workout areas or jungle gym ninja warrior type activities

unaik

8/21/2025 07:13 PM

I hope these trees are addition to the existing trees and not a replacement

slavskys

8/21/2025 08:04 PM

Bathrooms closer to the playground area. When kids have to go idk if I can walk that far without them having a possible accident

Redding

8/21/2025 09:08 PM

I am delighted that there are plans for a fountain and I hope that it will be an interactive one. Kids love the Nagouchi fountain in Downtown Detroit. There should be benches all over the park, not only by the playground. A very big climbing structure would be suitable for older children, I have seen those in Prospect Park in NYC

drvandom

8/22/2025 06:14 AM

See comments from item 6

KennPopp

8/22/2025 07:17 AM

The placement of the proposed restrooms is a bit offensive to the two houses directly across from the park. I live at 515 Kennesaw and do not want to look at a restroom when I look out my window. It becomes a public restroom for anyone driving by, which happens quite often day and night. I think it would be better placed further into the park, away from the street or near the parking lot by the softball field.

JenB

8/22/2025 08:35 AM

We used to have a bench swing that our neighborhood highly enjoyed. It was wonderful for parents to sit with their little ones, a nice place to sit with friends while watching their children play and for the elderly. It would be nice to see that return.

PPresident

8/22/2025 09:52 AM

See comments above

livelovelaugh

8/22/2025 10:34 AM

Add more benches, bench swing, shade sails

user-name-change.

8/22/2025 10:39 AM

I would remove the restrooms and plant more trees behind the homes that back up to the park.

Singram

8/22/2025 11:49 AM

Add adult swings

saraostrowski9

8/23/2025 03:24 AM

This rendering at least implies it should be more nature focused than the top rendering where there are few trees and artificial turf over a large area. The little kid play structure is on top of the older kid play structure. This makes it very challenging to watch littles at the park as they are enticed to go up into the larger structure the whole time and they can not play independently.

Optional question (57 response(s), 96 skipped)

Question type: Essay Question

Q10 | If the Concept Plan doesn't appeal to you, please let us know why:

JBhm

8/07/2025 02:39 PM

The drawing is too small to understand what the components are.

kpcleary

8/08/2025 08:57 AM

The paths are awful. If you intend cement, it will be worse than awful.

jqseedy

8/08/2025 12:19 PM

Keep it more natural. Less paving. We have enough walkways and similar in Birmingham, Poppleton is unique with its green space.

Rosie61

8/09/2025 09:40 AM

I hope you are keeping the mature trees

LaurenAbbey

8/09/2025 10:36 AM

What is a lawn activity space? Paved paths break up the green space and will not be maintained by the city causing it to be unsightly and unusable in short order.

Bham

8/12/2025 03:54 AM

Same problem, can't tell and I'm not going to go find the concept plan and dig through it right now.

elliebadge

8/21/2025 01:11 PM

Way too big

falloffthe cliff

8/21/2025 05:41 PM

Developing the park on a piecemeal basis does not make sense to me. The overall plan lack details that are important "TBD's" and the playground is being developed without consideration of the the overall park purpose which is to serve as the neighborhood park. By focusing on inclusivity we are excluding the rest of the community. Why can't we have both? Teenagers and adults enjoy playing as well!

Sasa

8/21/2025 06:21 PM

We need swings for young children and adults. The restroom structure is situated before the playground. It should be located behind the playground and away from the street. There is no true depiction of the park as a whole. We were told the walkways and other areas shown in the rendering are not part of this phase. Instead of piecemealing the plan, show the residents a full design. The committees work in silos too often so there rarely is a full plan set forth. See my other comments above. .

change.1..

8/21/2025 07:15 PM

I think there are too many sidewalks through the play area. I would rather have less concrete and more green space. The play area and concrete will also all be in the sun constantly so it will be a huge heat sink and be unusable in the middle of the day. Shaded play areas would be nice.

Ehill

8/22/2025 04:45 PM

Leave the green grass!!! Please do not extend the park. It has so many uses.

Optional question (11 response(s), 142 skipped)

Question type: Essay Question

Q11 | Is there anything else you would like to share about this playground?

SKupczyk

8/05/2025 04:18 PM

Not sure how much but pour n play for the entire area

JBhm

8/07/2025 02:39 PM

A young man named John who lives on Kennesaw uses the tall swing every day. We all look forward to seeing him and saying hello. Please

install a swing similar in height to the one that is there. Better yet keep the existing swing.

KathleenTigheKriel

8/07/2025 04:01 PM

Keep it as to smaller kids focused

jfallucc1

8/07/2025 04:45 PM

Basketball court/hoops

EPhillips

8/07/2025 05:34 PM

I'm glad it is finally being improved. We love the park. Maybe could add a small dog park since our dogs are not allowed off leash in the park. Somewhere for them to run. Maybe along the baseball fence

klh

8/08/2025 03:43 AM

A one mile walking path/jogging path with interval training stations — pull up bar, balance beam, etc.

Madison St

8/08/2025 04:05 AM

It's a nice improvement. I'm all for getting rid of all the wood chips. Also if you install a water fountain/dispenser DO NOT PUT IT NEAR THE SANDBOX! The fountain at Adams park is constantly full of sand dumped by unsupervised children. The dog dish is constantly needing to be cleaned out of cups of sand that have been put in the and parent wash off their kids feet in it as well. FIND A SAFE SPOT FOR THE WATER FOUNTAIN SO EVERYONE CAN USE IT AND FAR AWAY FROM THE SANDBOX.

kpcleary

8/08/2025 08:57 AM

Enclosing elevated space is also a bad idea. Everything should be in full view of people on the ground.

Kathleen McInerney

8/08/2025 09:06 AM

I APPRECIATE ALL OF THE HARD AND THOUGHTFUL WORK YOU ARE ALL PUTTING INTO POPPLETON PARK. IT NEEDS TO BE UPDATED, BUT I'M HOPING IT WILL NOT LOOSE IT'S NEIGHBORHOOD FEEL AND LOOK LIKE A FAIR GROUND.

Hawada

8/08/2025 10:56 AM

Putting green! If you install artificial turf, a putting green would be great for something that parents can do with their children.

tserra

8/08/2025 12:09 PM

Will the bathrooms be actual bathrooms or just Porto potties? It'd be great if they are actual bathrooms. I think Birmingham in general is missing public restrooms.

auntcricket

8/08/2025 12:17 PM

Emergency phone station

jqseedy

8/08/2025 12:19 PM

Completely opposed to any parking on Oxford. We already have major issues with cut-through traffic on Wimbledon, and adding parking within the neighborhood only makes it more unsafe for our children to play.

jcanvasser

8/08/2025 12:24 PM

It's not very exciting. What about a splashpad or water feature? Rochester and Royal Oak have fantastic play areas that incorporate more interactive features, such as water, sound, etc.

casacelisgirl

8/08/2025 12:29 PM

Add parking so people who do not live exclusively in the Poppleton park area can use it.

dougcharron

8/08/2025 12:41 PM

Nope! Kenning Park next!

PJJONES

8/08/2025 12:43 PM

I really like the paved path around the park! It's good to have a walking path where you don't have to worry about vehicular traffic. Thank you.

jenheatherly

8/08/2025 01:04 PM

Add a fenced dog park area

artluz

8/08/2025 01:31 PM

No

britburns117

8/08/2025 01:40 PM

I love the new water bottle filler at Adams park—would be nice to have here as well!

Resident1

8/08/2025 01:49 PM

Adam's park improvements have made that park increase in use. Well done.

Kas033

8/08/2025 02:37 PM

Maybe not right with the playground, but it would be very nice to have a space with benches/seating to read a book, drink the coffee my friends and I got on our walk from Roast, etc. Just a nice spot to spend some time outside.

elizabethbham

8/08/2025 03:56 PM

Parking is an issue. For those of us who live in Poppleton Park, the road in front of the park can be almost unusable when people park on both sides of the street.

lewis0626

8/08/2025 04:05 PM

I think the team of landscape and playground architects have done a wonderful job designing a play area that could really be a leading "inclusive jewel" of Birmingham public parks. This is something the city should be proud to promote to its' residents and surrounding communities. Parks mean a lot to people of all ages and abilities. By including the 12 + age swings (that are currently there and used often) the redesign helps to include one more group to the play area, older children or individuals that enjoy therapeutic swinging. Please do what you can to research this further and seek out a way that this element to the park could still be preserved under the arching concept of inclusivity. I also suggest larger swings still be considered even if they have to be placed distant from the new conceptualized "playground area". Perhaps both a bench swing for all ages and a 10–12-foot swing set for older kids could be placed in a separate area facing the playground for younger children, it is a very large park after all, space should not be the issue. If in the future, wellness equipment for the adult population is added in another phase, then the fantastic new playground combined with a bench swing and 12+ swings...you really will have created an exemplary park that meets the needs of the entire community 'young and older'. Thank you for all the hard work the parks and rec team have done to reimagine Poppleton Park...it is going to be a gem!

amccarley

8/08/2025 05:02 PM

I like the berm would be great to host city events there as well

murph313

8/08/2025 05:38 PM

I don't think being taller is a good idea. I think it should be wider and have more accessible points for kids. Seems like this will be very congested and kids running into one another just like Adam's park. At least they are including a smaller aged park with Poppleton unlike Adam's park. Again I would look into Berkley or innovation park for more ideas. A splash pad component might be nice too. A water bottle filling station near bathroom would be nice. Also consider gates around because many people do not respect the rules of no dogs in the kid area.

Chelsea A.

8/08/2025 05:50 PM

I think it should be fenced in with one access point in/out for safety. I also would suggest more shaded areas.

Mclan3216

I have a granddaughter who is severely handicapped and her favorite

8/08/2025 05:55 PM

thing was to be on my lap on the swing that was a bench we missed that so much. I could hold her in my lap since she's incapable of walking or using her legs or her arms, and we could watch the other kids play. Please bring that back.

naliaal

8/08/2025 06:51 PM

Please make an effort to keep key elements of the playground- heights swings possible and a sandbox are extremely popular at this park and we would like them included in the new plans.

Yaxie

8/08/2025 07:04 PM

Please please please leave the big trees! It gets so very hot in the summer! And waiting for them to grow is just too long. Adam's park is new and still hasn't developed its coverage. Having two exposed parks would be a real loss to daytime play potential.

vandoja

8/08/2025 08:36 PM

A pavilion would be really nice to have but not one that is rented out.

basolomon

8/09/2025 04:08 AM

Tennis court comment: the court area should be dedicated to either tennis or pickleball. Tennis players don't like pickleball lines and pickleball players don't like the scale of a tennis court. Also, each sport uses a different height net.

Joe C

8/09/2025 04:25 AM

We have four grandchildren who live out of state. It is possible in the future we would visit the park with one or several. From my perspective, a bathroom would be helpful. I am a 78 year old male who regularly needs a bathroom. I recognize the construction and maintenance costs would be substantial. In deciding whether to incur these costs, I vote for Yes.

Heidi G.

8/09/2025 05:26 AM

Yes, as a resident of Poppleton Park for 30 years, I have a few comments/ideas. I applaud new play equipment - what we have now is underwhelming and there is not much for older children. The most important issue for us neighbors is parking. You MUST address this along with the new concept. There must be parking on only one side of Oxford - both sides is dangerous and doesn't allow for school busses and emergency vehicles to get through. Also, the bordering neighbors have no choice than to deal with a multitude of vehicles. The parking lot for the park is far from the playground and is not used as it should be. Another issue is that part of the park floods during some rainstorms - the field needs to be re-graded and re-seeded. But all of the greenspace at Poppleton is what most people think of when they think of Poppleton Park - Let's keep it that way! More trees along the entire perimeter of the park would be a worthy investment -

especially on the Woodward and Oxford street sides of the park. Lastly, i would like to bring up the important point that the Poppleton Park playground is located in the middle of a beautiful Birmingham neighborhood. It should first serves the needs and wants of its direct neighbors. walking to a park is ideal - especially to one that does not have a practical parking lot. What us neighbors end up with are cars, cars and more cars, parking on both sides of Oxford Street. Addressing this is just as important as a new playground design. Thank you for the opportunity to comment on the new design.

dancerkdgood

8/09/2025 05:44 AM

We would like something you can bounce on, double swings (for 2 kids at a time), a zip line/zip line swings and sandboxes with lots of toys, and slides that look like a dinosaur , bouncing/riding animals

Trabo9430

8/09/2025 08:57 AM

Need pickleball courts!

dhseidman

8/09/2025 09:28 AM

Parks should be for everyone. Again, I applaud the accessibility of this design for those with disabilities. That is SO important so that those in our community do not feel marginalized. But in this design, that is done with significant cost - excluding children who are able-bodied and need physical activity along with risk taking and problem solving. I would like to see some structures that encourage risk-taking, problem solving, and even some older kid/adult features like gym equipment.

Rosie61

8/09/2025 09:40 AM

Please include swings for our autistic neighbor. He uses this playground more than anyone in the area.

KBY

8/09/2025 09:43 AM

Yes, my children have grown. It would be great to have a corner of the park be a fenced in dog park. Also, we have a 12 year old boy who is on the spectrum who uses the park daily to swing. PLEASE MAKE SURE YOU HAVE SWINGS FOR HIM.

Bhamocks

8/09/2025 10:18 AM

I am glad upgrades are being made, although we outgrew it while waiting for Adams park to finally get upgraded (I was trying for 10 years). Don't wait! Poppleton is outdated.

LaurenAbbey

8/09/2025 10:36 AM

Just put in something that will last and need little maintenance as we know the city won't keep it up. Move quickly as this is long overdue.

gabrielazanfir

8/09/2025 10:53 AM

Please continue to provide swings for +12 years old people.

Irnbru

8/09/2025 11:49 AM

Plan is well thought-out. Particularly like the footpaths throughout the park - badly needed. I'd like to request placement of more seats in the park -adjacent to footpaths, especially to the north and west. Seats are useful for all users, but especially for elderly people who want to combine exercise with resting spots!

KDB

8/09/2025 12:07 PM

Thank you for keeping and including so many trees!

Wnsmom24

8/09/2025 12:41 PM

Please make sure there are swings available for ALL ages, including young adults/ adults. Thanks! Please don't remove large healthy trees. Please don't crowd newly planted trees too close together.

elg

8/09/2025 01:50 PM

Thank you!

julie_e_c

8/09/2025 05:37 PM

I am a parent of high school aged kids so though I walk my dog by the park daily, and through the outer spaces, we no longer use the playground. I often see middle/high school kids swinging and would love to understand how they can be included in this design - playgrounds should be for kids of every age and every ability. Our teens today are always told where they DON'T belong - and when Adams Park was built neighborhood parents complained that the Roeper kids were using the park "too much". This seems like a problem that can be solved if we keep middle and high school-aged children in mind in the design phase and include equipment that can handle their sizes and weights. Let our teens feel as at home in the park as they did when they were toddlers!

JRB

8/09/2025 06:34 PM

Please keep the history integrity and charm of this park. This park is very well used by kids of all ages. The proposed play structures seem like they could be more expansive to accommodate more children. The little spinners/bouncers/cars don't have much longevity with play. Invest more in more spacious and diverse structure - included bridges, tunnels, monkey bars. Please include swings that range from babies to adults, many older neurodiverse kids in the neighborhood love the swings.

NCGreen

8/10/2025 05:47 AM

I am very happy with this new design (with hopefully amended suggestions) and know my children and incoming third child would

love to use this!

South Poppleton Neighbor

8/10/2025 07:09 AM

Extremely happy to see Birmingham converting Poppleton to an "all abilities" park. It is much needed within our community. We have special needs grandchildren and we are excited to use the park when it is available.

Carpnbp

8/10/2025 07:46 AM

Please do not add parking, a pavilion, or access from Woodward.

Murphydog#2!

8/10/2025 08:28 AM

Need more picnic tables & benches under shaded areas for families to use

Leebartoshuk

8/10/2025 10:58 AM

No said it all above

judgenot6

8/10/2025 11:12 AM

The large swings to remain - that is a must have. I, as an adult, enjoy swinging together with the older children. Birmingham, in general, has done a great job of making play structures accessible - but only for those under age 7 (at best). There seems to be no recognition that our parks and play structures should be for all ages. The Adams park play structure is boring and unusable for anyone over the age of 6 - so should be a harbinger of that which should be avoided. The parks need to be for all; including adults who enjoy the greenery and watching children play. This proposed structure is an assault to the senses vs. a design which is meant to enhance and envelope the beauty of nature. And, finally, restore the bench swing. Nothing special needed there but a wooden bench and a metal frame. The amount of time and conversation regarding the bench swings at the latest parks and rec meeting was abominable. It's just not that hard, folks.

JB

8/10/2025 04:47 PM

We're looking forward to the changes

SAWilson

8/10/2025 06:57 PM

Consider permanent small bathrooms next to the baseball field and tennis courts

gnifr

8/11/2025 11:43 AM

More trees, more tree-covered benches/seating areas for adults.

leeross211

8/11/2025 12:17 PM

Let's get this right. It's a special park to the neighborhood and to the whole community. PLEASE prioritize the walking paths and improvements throughout the remainder of the park. Much of the acreage is currently not ACCESSIBLE to many. It's a large and beautiful park. Thank you for your work and service to Birmingham. Our neighborhood parks are one of the major things that set us apart in Metro Detroit.

KatyD

8/11/2025 06:14 PM

Keep it neighborhood focused and accessible. We do not need big crowds. It's the perfect place to meet other Poppleton families and is a great example of a public space. Also please put the benches in some shade.

Bham

8/12/2025 03:54 AM

rdbrittain

8/13/2025 07:32 AM

Avoid dirt, wood chips, etc. Clean soft surface for young kids!!

Theresa Elson

8/13/2025 12:00 PM

Glad to see wheel chair accessible. Are the bathrooms a structure? If so, how will they be monitored?

Sarahmockeridge

8/13/2025 01:56 PM

Keep with colors of nature, blues, greens, grays, browns.

Catdubois

8/14/2025 03:47 AM

In addition to being inclusive for all abilities, I hope Poppleton continues to be inclusive for all ages. The fact that there is currently a play structure that he can easily climb and use slides is the reason we visit the park, and he can grow with it. Additionally, please do not put a water fountain anywhere near a sand box. We visit Adams Park frequently and the fountain is many times unusable because people have put sand in it. The sand box is also a mess in general because sand makes its way out, and it would be nice to have one in a separate area that doesn't interfere with other play areas (the sand box at Kenning is equally intrusive). Last, please consider ensuring that baby swings are in the shade during times of the day it can be the warmest/sunniest!

aw2446

8/20/2025 04:18 AM

Recommend having trash cans that close. Open trash cans lead to flies and bees buzzing around the opening.

johnrogers

We appreciate what you are doing and our son is excited to use this

8/20/2025 05:25 AM

new park! Something must be done about the swings and sandbox! I would suggest you balance the mandate to make the park a destination for accessible play in the city with the need to maintain the favorite elements for children who live close and use the park every day.

Shain

8/21/2025 12:09 PM

Be considerate of John the young man who swings daily.

elliebadge

8/21/2025 01:11 PM

Please rethink these plans - our backyard is Poppleton (we live at the corner of Wimbledon & Oxford) and we see first-hand the number of people that come to this park, and it is not that many where the park would need to be this big/spread out. We agree that it could use some equipment updates but the entire layout of the park does not need to be changed.

Gabriellerakitin

8/21/2025 05:20 PM

I would add things for older kids like workout areas or jungle gym ninja warrior type activities.

Birmingham2021

8/21/2025 05:32 PM

Please keep swings for older kids, not just small children

fallofthe cliff

8/21/2025 05:41 PM

At the last meeting, I was surprised to learn that the budget of \$1,000,000 is just for the playscape. WOW! TOO MUCH! In addition, I found it ironic that the project is focused on inclusivity for Poppleton Park and at the same time the meeting was unable to accommodate an elderly gentleman who said repeatedly that he could not hear the proceedings. He left.

Sasa

8/21/2025 06:21 PM

Keep the update simple. Provide child and adult swings, monkey bars and sandboxes. The benches and table designs from some of the companies are too modern and do not fit in a neighborhood filled with 50 to 100 year old homes.

unaik

8/21/2025 07:13 PM

-get swings -keep trees -will the really high areas be transparent or somehow visible to the adults below

change.1..

8/21/2025 07:15 PM

The field to the West of the current play ground could be a great multiuse sports field. A walking path would be great there too around the perimeter of the park.

Judy.sh

8/21/2025 07:56 PM

Please add seating and shed areas. For bigger gatherings, birthdays, celebrations..

Redding

8/21/2025 09:08 PM

More parking spaces are needed for those of us that do not live within walking distance. We live two miles away, west of Woodward. Thanks for considering our ideas.

drvandom

8/22/2025 06:14 AM

we don't want to lose the neighborhood feel of the current play area. We are so open to updates but we also don't want to walk by everyday and feel like a theme park was dropped into our backyard. Adding family gathering areas for picnics, shade with landscaping, and updating the play structures is very welcome.

KennPopp

8/22/2025 07:17 AM

The accessible parking on Oxford might be better lined up with the Mohegan intersection than at the base of our neighbor's driveway. When the park is busy, it is very tight getting in and out of our driveways.

JenB

8/22/2025 08:35 AM

My son said it's nice but it would be cool to have a wood setup like Booth Park that allowed a variety of ages to explore and enjoy.

Swing happy

8/22/2025 09:08 AM

Please keep the 12 plus swing. It's the only reason I logged in.

cjc463726

8/22/2025 09:27 AM

No

PPresident

8/22/2025 09:52 AM

It's a play ground for everyone...

livelovelaugh

8/22/2025 10:34 AM

Plenty of room ! - add back in after removal of existing equipment: Monkey Bars, Code -compliant "big kid" + intergenerational swings to replace existing 12' swing, sand box. Phase 2: Move location of permanent bathrooms more west, away from Oxford Rd. & driveways off of Mohegan. Sewer/h20 lines have to be installed anyway - there is no reason to have these so close to the roads & residential area. Add in: Splash pad & sun sail.

user-name-change.

8/22/2025 10:39 AM

Add picnic tables - these get used!!

Singram

8/22/2025 11:49 AM

Would love an ice rink for winter like at Barnum park so that the park can be used in the winter months.

erilai

8/22/2025 05:14 PM

SO happy this is being prioritized - thank you!

Ausra Zurro

8/22/2025 06:57 PM

The rendering does not show trees and shaded areas in the park. Especially where benches are located. With summers becoming increasingly warmer these parks become unusable mid day. I'm suggesting to plant beautiful maples or oak trees for generations to enjoy and for kids not to be protected from a scorching sun.

KathrynMurray

8/22/2025 07:38 PM

I love that this playground seems to provide space for older children. I find that the basketball court at Adams park is constantly being used by children and adults. I would love to see a basketball court be added to the design of poppleton. I believe the basketball court brings older children to the park more consistently and having community gathering places for teens within the Birmingham community is important.

saraostrowski9

8/23/2025 03:24 AM

I hope it is still very nature focused. That the current trees are not cut down.

kseedial

8/23/2025 09:23 AM

I love playgrounds that have fun places to c climb and go down slides but are well enclosed so mothers don't have to worry about young kids on it and falling down from high up areas.

Optional question (89 response(s), 64 skipped)

Question type: Essay Question



MEMORANDUM

Multimodal Staff

DATE: August 28, 2025

TO: Parks and Recreation Board Members

FROM: Leah Blizinski, City Planner
Melissa Coatta, City Engineer
Ryan Kearney, Police Captain

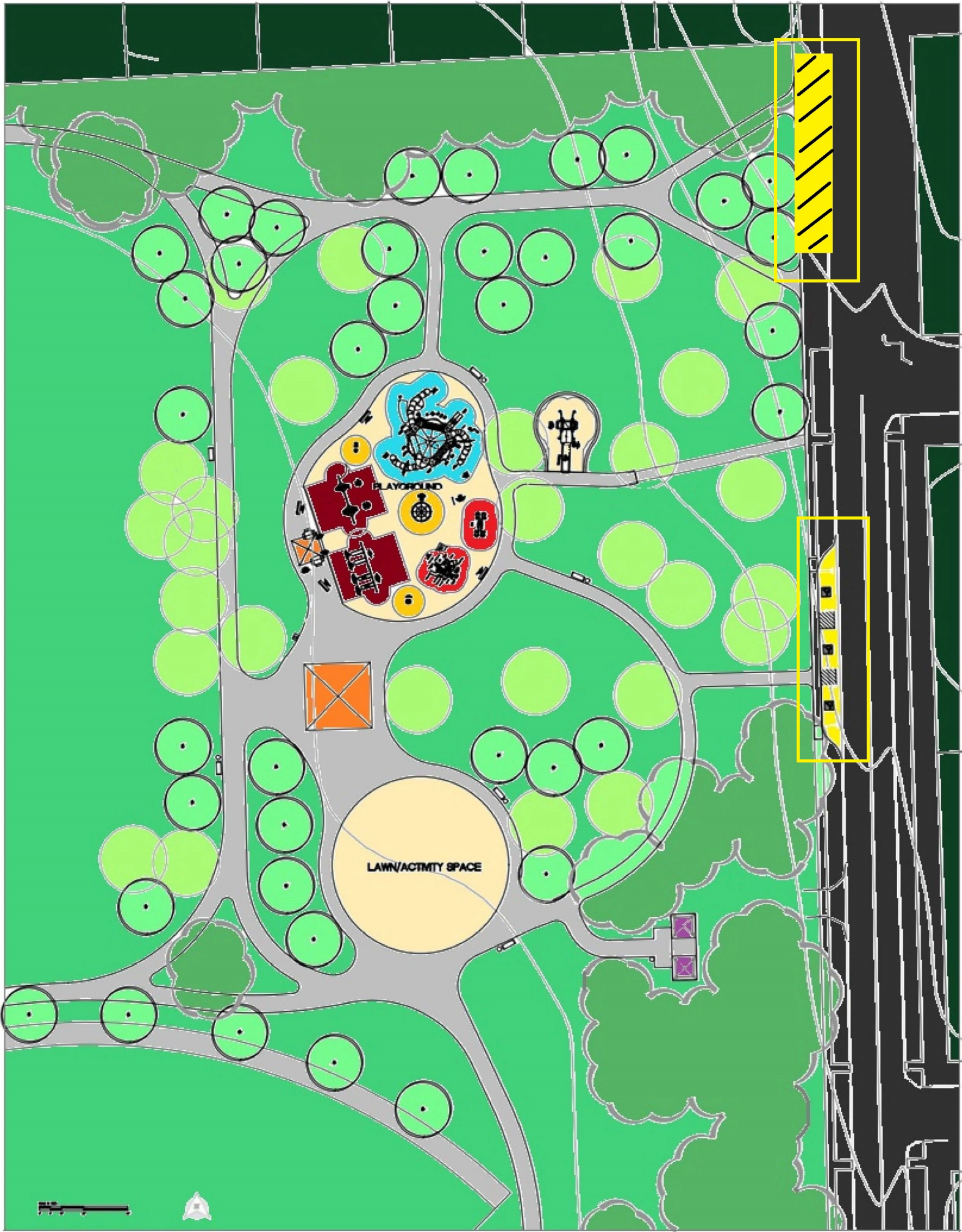
SUBJECT: Poppleton Park Playground Improvements

We are pleased to have the opportunity to provide some feedback regarding the preliminary designs for the Poppleton Park Playground Improvements dated August 27, 2025. As a general observation, the concept plans appear to be well done. This memo is meant to provide review of the proposed project with respect to multimodal considerations.









The Birmingham Multimodal Transportation Plan (2013) proposes that a 10' pathway be constructed through Poppleton Park connecting Woodward Avenue to Oxford Street. The plan, recommends that the path be 10' wide and constructed of asphalt. The proposed Poppleton Park Playground Improvements concept plan includes a network of pathways around the playground areas and to Oxford Street. The new paths between the parking and playground area come out to about one third of the way through the park. It is unclear from the plans what type of path is being constructed and how wide it will be or whether the path will be appropriate for bicycles. The board should consider making a portion of the path connecting to Oxford street suitable for bicycle use. A future path could connect the sidewalk along Woodward to the network of playground paths, to fully implement the connecting path.

As noted in the Birmingham Multimodal Transportation Plan, "parks, plazas and transit stations are all important destinations for bicyclists and pedestrians." As such, the Parks and Recreation board should consider including bicycle parking near the entrance or parking areas for the improved playground. Bicycle parking should be visible, accessible, plentiful and convenient. As this is a community park, the board could consider including a bicycle repair station as well.

The Planning Division and Multimodal staff liaisons will remain open to conversation throughout the entire process and will endeavor to be a partner to the Department of Public Services and the Parks and Recreation Board to ensure that the City provides users of the park a project that we can all be proud of!



LEGEND

-  EXISTING TREES
-  PROPOSED DECIDUOUS TREE
-  PROPOSED SHADE STRUCTURE
-  PROPOSED RESTROOM ENCLOSURE
-  PROPOSED PARK BENCH
-  PROPOSED PLAYGROUND BENCH
-  PROPOSED FOUNTAIN
-  PROPOSED RECEPTACLE

PLAYGROUND CONCEPT PLAN

PL-1

Department of Public
Services

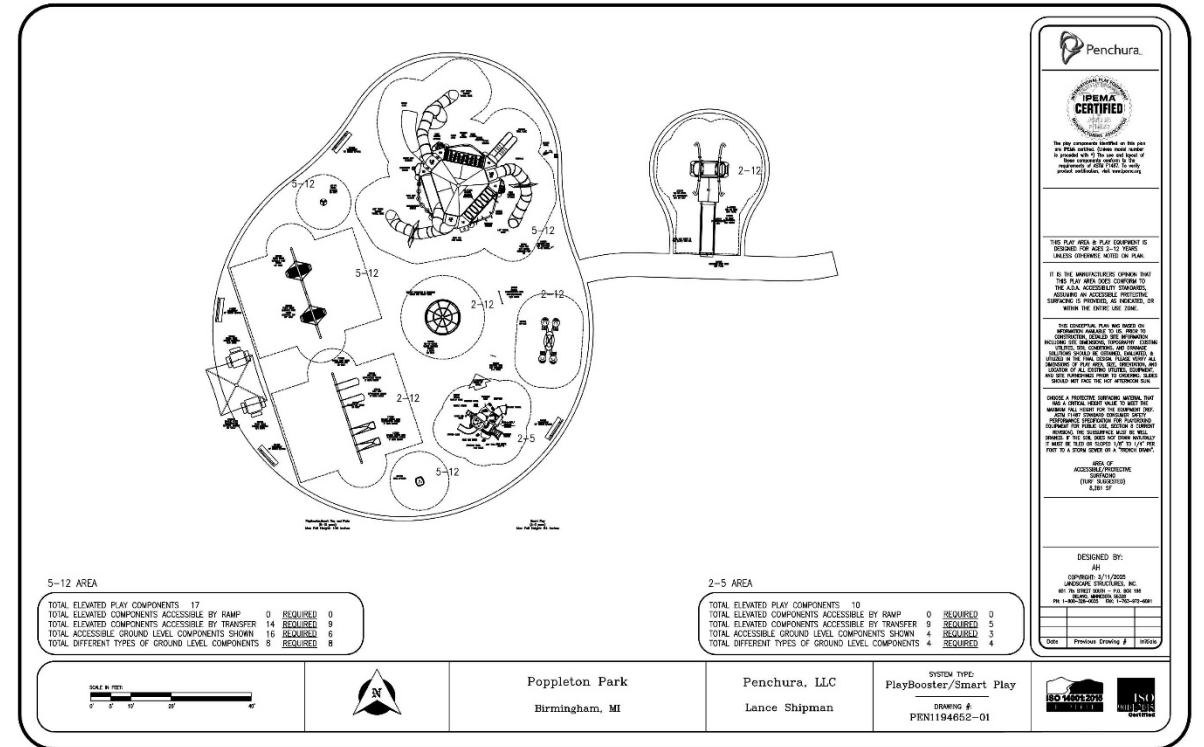
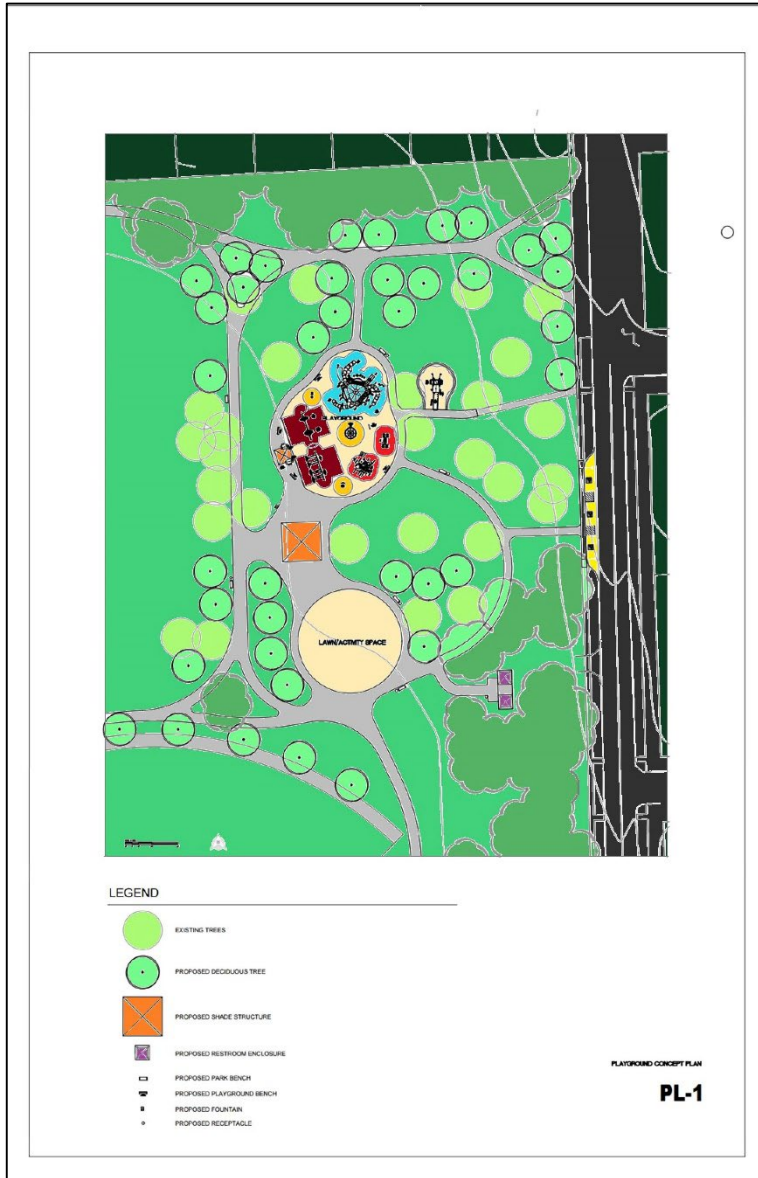
Presented by: Carrie Laird

Date: September 9, 2025

Poppleton Park Playground Improvements

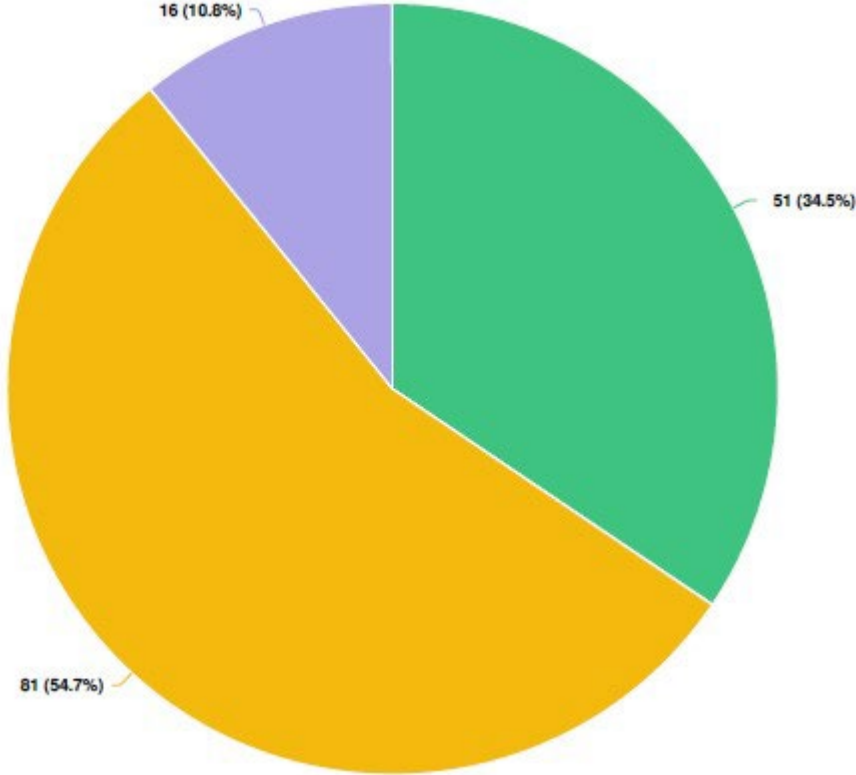


Initial Draft Poppleton Park Playground Concept Plan



Survey Results

- What do you think of the concept renderings?



Question options

● I like it! ● I like it, but I would change something. ● I don't like it.

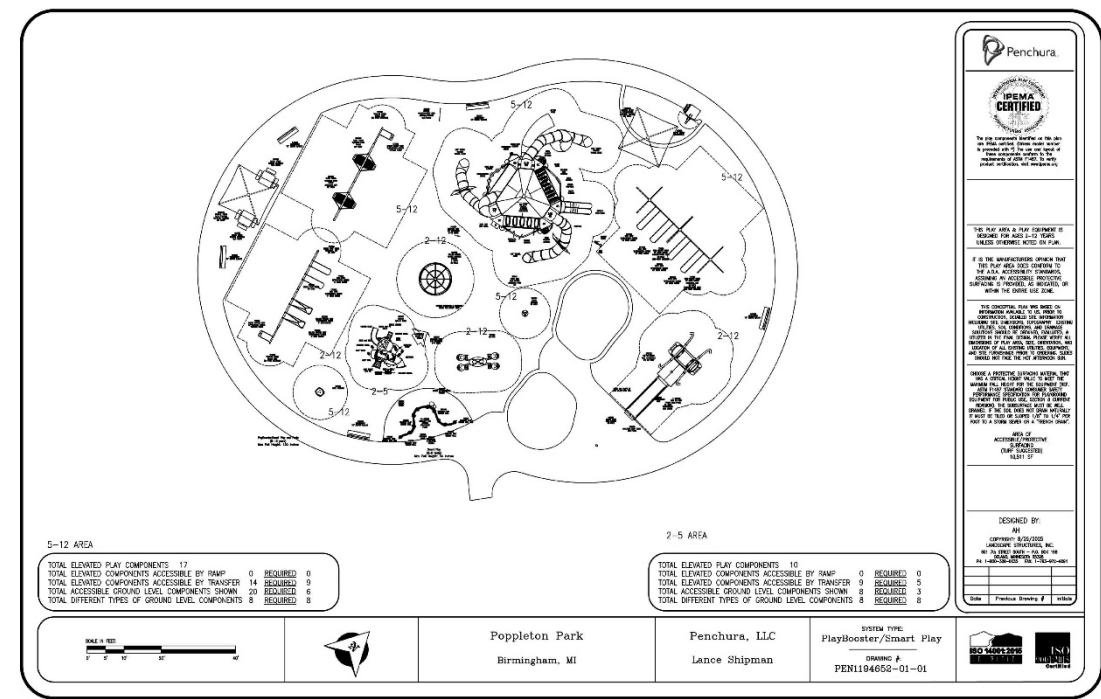
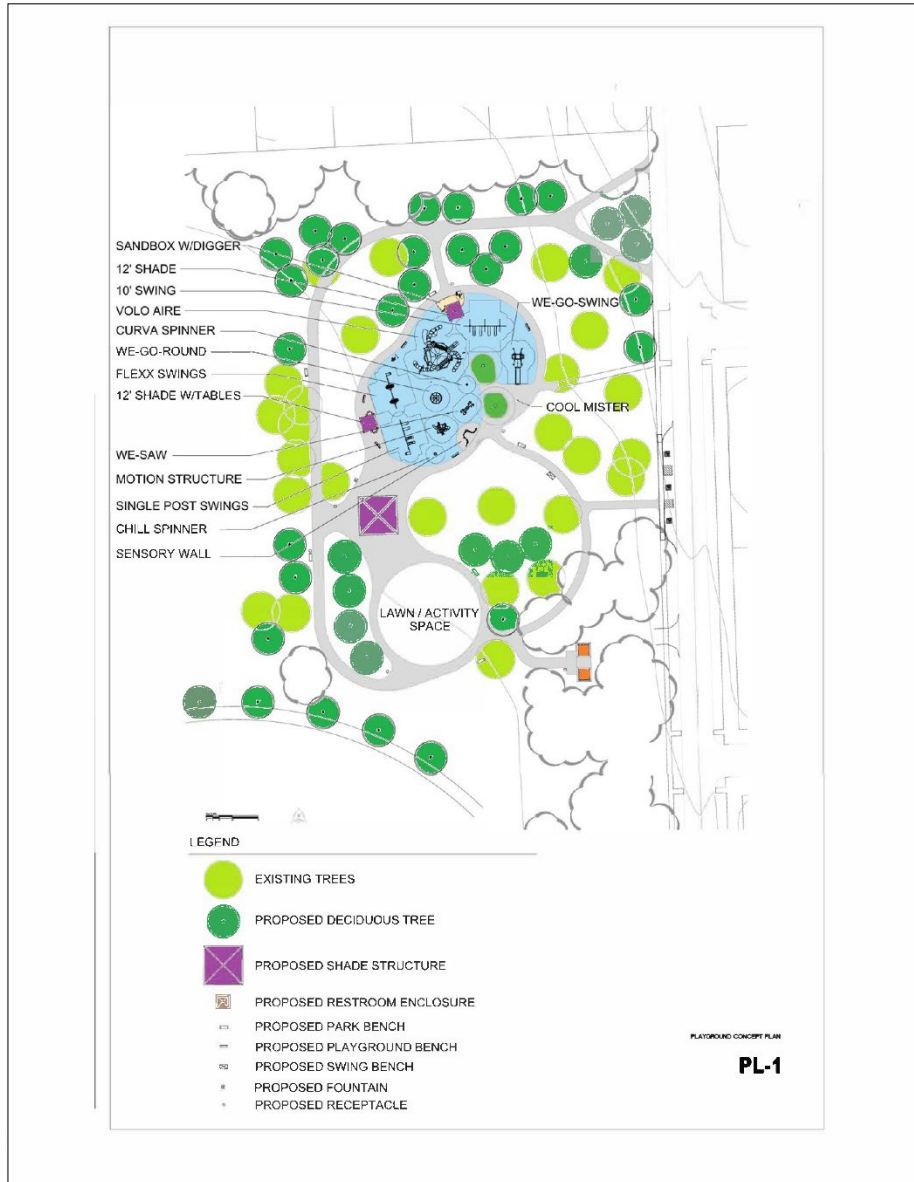


Survey Results/ Public Input Feedback Key Points

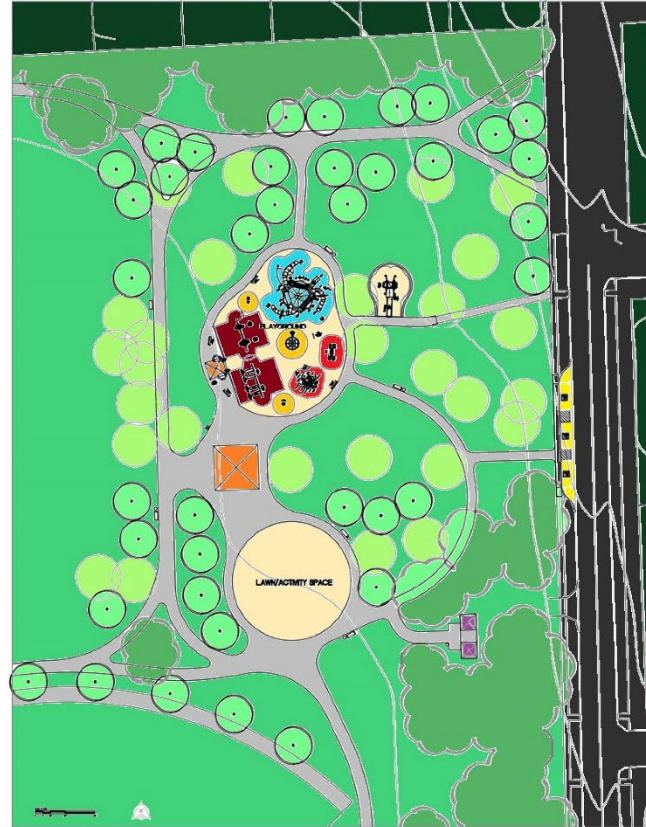
- Taller/All ages Swings
- More Shade- Keep Trees-
- Sandbox
- More for Adults
- More for younger kids (2-5)
- Concern with height of tower-visibility-
and general appearance of structure



Updated Draft Poppleton Park Playground Concept Plan



Initial Draft Concept



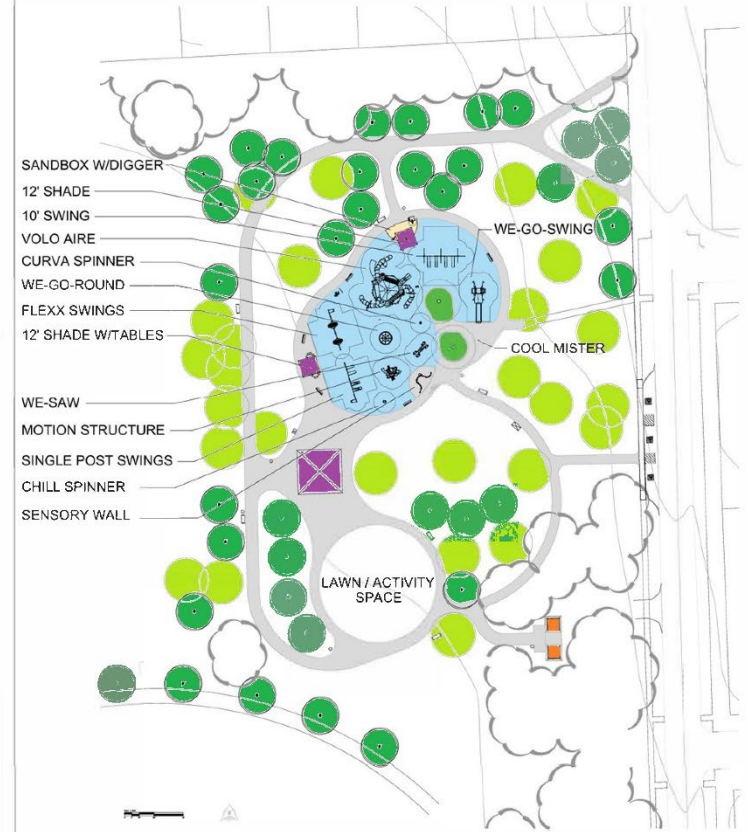
LEGEND

- EXISTING TREES
- PROPOSED DECIDUOUS TREE
- PROPOSED SHADE STRUCTURE
- PROPOSED RESTROOM ENCLOSURE
- PROPOSED PARK BENCH
- PROPOSED PLAYGROUND BENCH
- PROPOSED FOUNTAIN
- PROPOSED RECEPTACLE

PLAYGROUND CONCEPT PLAN

PL-1

Updated Draft Concept



LEGEND

- EXISTING TREES
- PROPOSED DECIDUOUS TREE
- PROPOSED SHADE STRUCTURE
- PROPOSED RESTROOM ENCLOSURE
- PROPOSED PARK BENCH
- PROPOSED PLAYGROUND BENCH
- PROPOSED SWING BENCH
- PROPOSED FOUNTAIN
- PROPOSED RECEPTACLE

PLAYGROUND CONCEPT PLAN

PL-1

Playground Renderings





landscape structures

Poppleton Park

Penchura

PEN1194652-01-01 • 8.29.2025

© 2025 Landscape Structures. All Rights Reserved



landscape structures

Poppleton Park


PEN1194652-01-01 • 8.29.2025




© 2025 Landscape Structures. All Rights Reserved





 landscape structures



Poppleton Park

 Penchura

PEN1194652-01-01 • 8.29.2025

© 2025 Landscape Structures. All Rights Reserved



 landscape structures **Poppleton Park**  Penchura
PEN1194652-01-01 • 8.29.2025

© 2025 Landscape Structures. All Rights Reserved



landscape structures

Poppleton Park

 Penchura

PEN1194652-01-01 • 8.29.2025

© 2025 Landscape Structures. All Rights Reserved

Lapeer Park, Dearborn MI



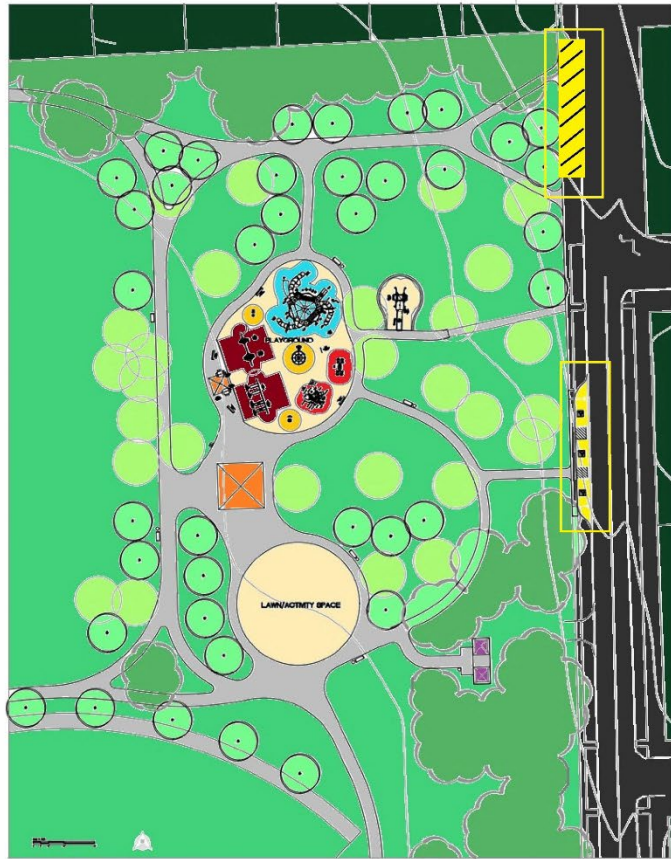
Lapeer Park, Dearborn MI











Joe Louis Greenway







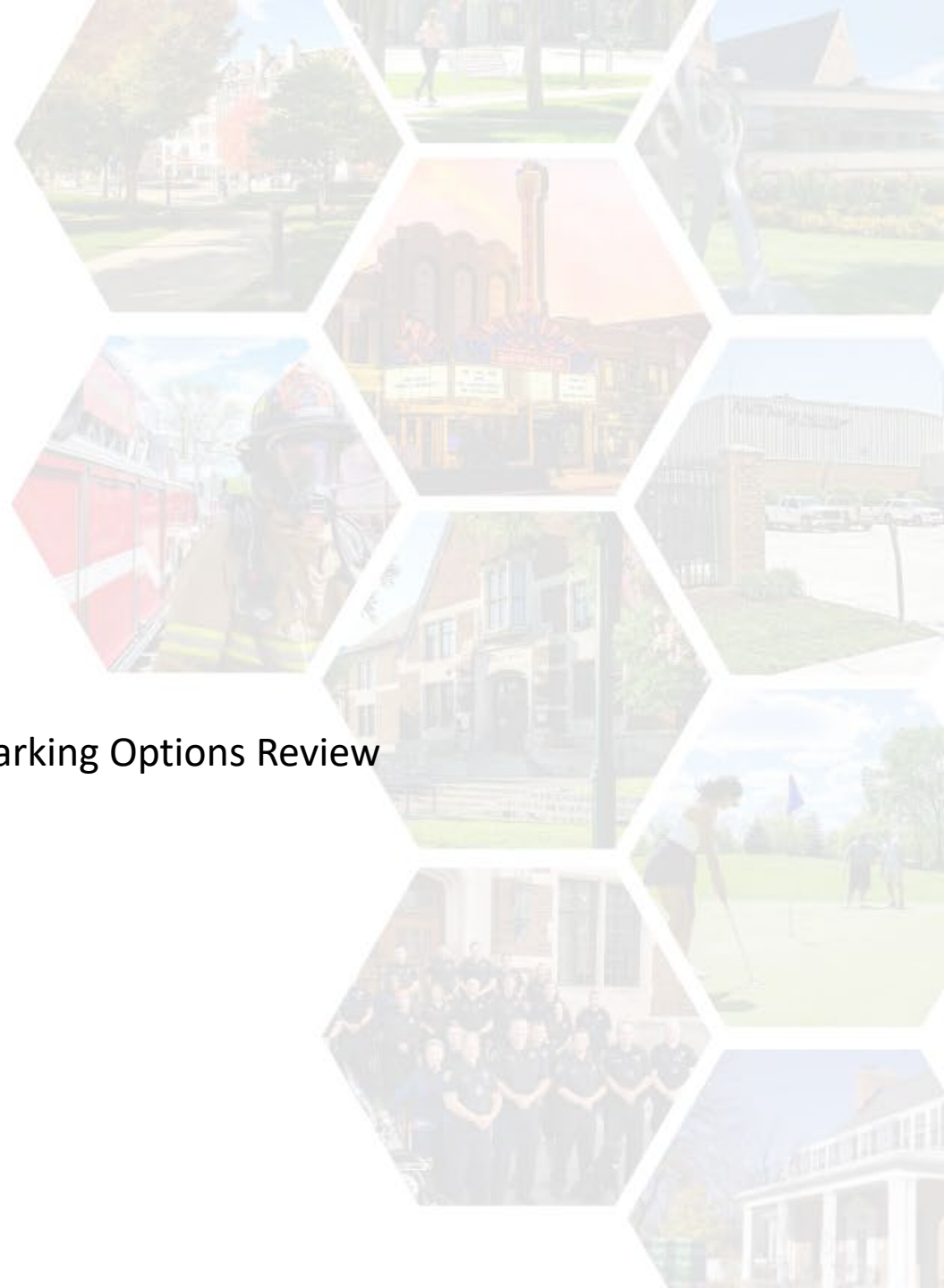
LEGEND

-  EXISTING TREES
-  PROPOSED DECIDUOUS TREE
-  PROPOSED SHADE STRUCTURE
-  PROPOSED RESTROOM ENCLOSURE
-  PROPOSED PARK BENCH
-  PROPOSED PLAYGROUND BENCH
-  PROPOSED FOUNTAIN
-  PROPOSED RECEPTACLE

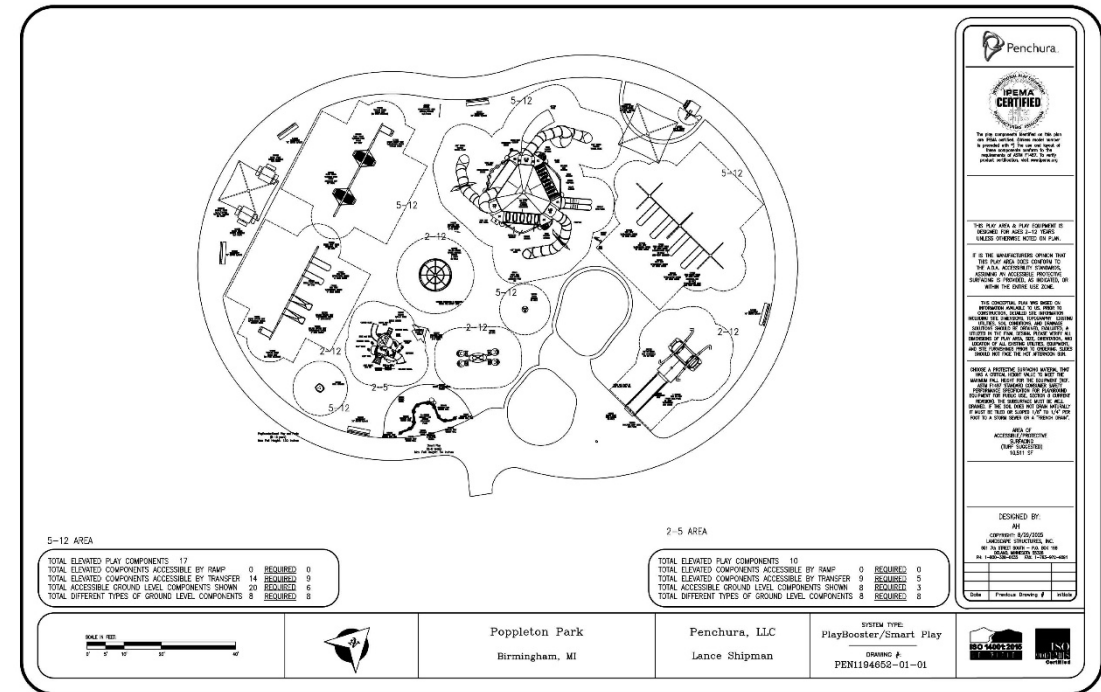
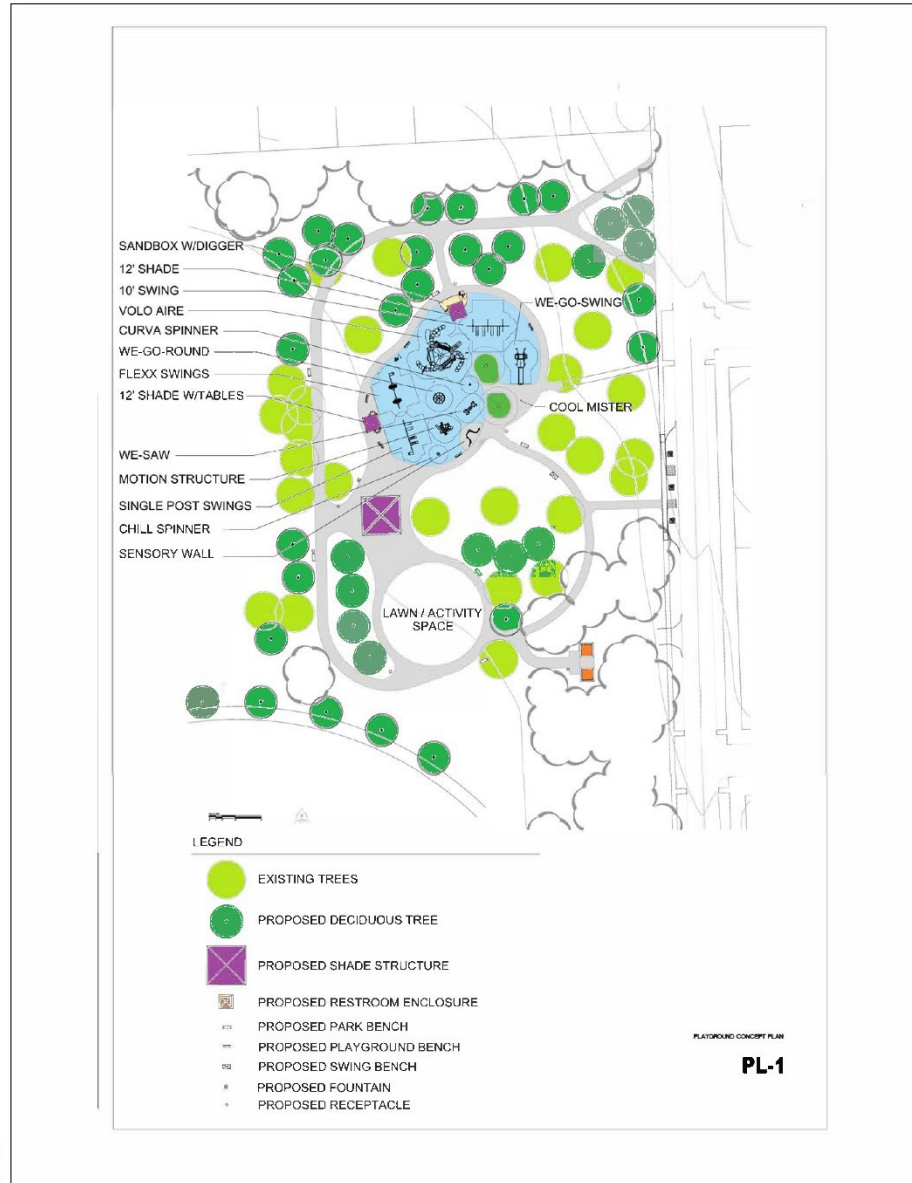
PLAYGROUND CONCEPT PLAN

PL-1

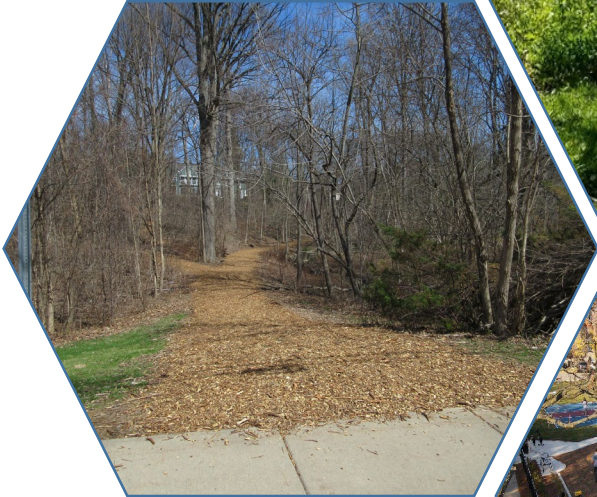
Parking Options Review



Updated Draft Poppleton Park Playground Concept Plan



Questions?



LET'S PLAY

BIRMINGHAM, MICHIGAN *Parks & Recreation*

Revised Parks and Recreation Board Meeting Dates (2026)

WILL BE HELD AT THE DPS CONFERENCE ROOM AT
851 SOUTH ETON
AT 6:30PM

January 6, 2026

February 3, 2026

March 10, 2026

April 14, 2026

May 5, 2026

June 2, 2026

July 7, 2026

August 4, 2026

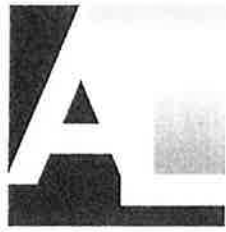
September 1, 2026

October 6, 2026

November 10, 2026

December 1, 2026

January 5, 2027



AUGUST
LAW

363 W. Big Beaver Road
Suite 410
Troy, MI 48084
248-833-6225

Michael C. Lewis
mlewis@august-law.com

August 6, 2025

VIA FIRST CLASS MAIL SERVICE

Ms. Carrie Laird
City of Birmingham Parks & Recreation Manager
851 S. Eton St.
Birmingham, MI 48009

Re: Poppleton Park redesign

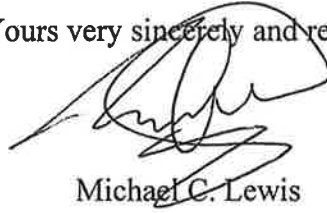
Dear Ms. Laird:

Along with my wife Kristi and son John, I attended last night's meeting on the redesign of Poppleton Park. I made the second public comment, advocating for the preservation of the existing adult swing set. We had to leave the meeting early, so I didn't hear the comments of the other speakers; I watched them this morning instead. I must say I was quite moved when Mr. Ross Lee, copied below, advocated on John's behalf that the adult swings be preserved. Mr. Lee said that John is well-known in the neighborhood. I've known this for a long time, but to hear it from someone I've never met brought a smile to my face, and it inspired me to follow up my comments with this letter.

Those swings must be preserved. They are important to John and to other autistic kids (not to mention to everyone else; who doesn't like riding the swings?). You see, to the autistic, swings are more than just fun; they're therapeutic (the vestibular sense Mr. Shipman mentioned). There is something in the rise and fall . . . up once more against eternity's blue, and down again . . . John also loves springing from a diving board, high but straight as a pencil and, for a nanosecond, just one nanosecond, like a bird in flight, free of nature's laws. Ms. Laird, if your goal is inclusion, as it certainly seems to be, and which I applaud, include John and others like him by saving those swings. They mean more to us than you realize, and I think you realize a lot.

Thank you for your attention and for all you do for the City of Birmingham.

Yours very sincerely and respectfully,

A handwritten signature in black ink, appearing to read "Michael C. Lewis", written over the closing text.

Michael C. Lewis

cc: Mr. Ross Lee

Dear Members of the Birmingham Parks & Recreation Board,

Thank you for your dedication to enhancing Birmingham's parks and for your work on the Poppleton Park redesign. As a resident who values our shared public spaces, I greatly appreciate the Board's mission:

"To provide opportunities for the enjoyment, education, and inspiration for present and future generations of residents and visitors through stewardship of natural, cultural and recreational resources. By continuously elevating the beauty and quality of the parks and recreation system of Birmingham, the Parks and Recreation Board will promote health and wellbeing, and strengthen the community."

This mission underscores the importance of creating spaces that are inclusive to all ages and abilities, preserve neighborhood character, and serve Birmingham residents first and foremost.

While I fully support improving accessibility for children with physical disabilities, the current design risks unintentionally limiting play for able-bodied children, older youth, and adults—including older adults. A design heavily specialized toward one group may also draw large numbers of visitors from outside Birmingham, straining park capacity, increasing traffic, and shifting the park away from its role as a neighborhood gathering place.

The proposed additional parking compounds these concerns. Expanded parking areas could reduce valuable green space, diminish the park's charm, and make the environment feel less like a neighborhood park and more like a regional destination.

Research supports designing parks that encourage physical activity, problem-solving, and intergenerational interaction for all ages:

- The **American Academy of Pediatrics** highlights that age-appropriate challenge is essential for healthy development.
- The **CDC** and **WHO** note that intergenerational spaces encourage lifelong physical activity, social bonds, and mental well-being.
- Balanced, inclusive design fosters community identity and ensures that residents feel the park is "theirs" rather than an attraction for primarily outside visitors.

I respectfully request that the Board consider the following in the final design of Poppleton Park:

1. Tiered challenge zones for all ages, from young children to older adults.
2. Universal access areas allowing shared participation among people of all abilities.
3. Adult and senior fitness equipment to promote lifelong activity.
4. Risk-benefit assessment to balance safety with developmental benefits.
5. Social gathering spaces to encourage intergenerational community life.
6. Parking limits that preserve green space and maintain the park's neighborhood character.

By designing Poppleton Park as a truly all-ages, all-abilities, and neighborhood-first space, the Board can meet its mission, protect the park's character, and create a welcoming place that strengthens community for generations to come. This would also align with the Birmingham Parks and Recreation Master Plan (12/18/23) which states the following as one of its guiding principles:

Inclusivity and Accessibility: *Embracing diversity and ensuring that everyone in the community can enjoy our parks, regardless of their background or abilities.*

Thank you for your consideration and for your dedication to ensuring our parks reflect the diverse needs of Birmingham residents.

Sincerely,



Daniel Seidman
652 Wimbleton Drive
dhseidman@gmail.com//248.202.4971

Supporting References

American Academy of Pediatrics – Power of Play in Early Childhood:

<https://www.aap.org/en/patient-care/early-childhood/early-childhood-health-and-development/power-of-play/>

AAP – The Importance of Play in Promoting Healthy Child Development:

<https://publications.aap.org/pediatrics/article/119/1/182/70699/The-Importance-of-Play-in-Promoting-Healthy-Child>

AAP – The Power of Play: A Pediatric Role in Enhancing Development in Young Children:

<https://publications.aap.org/pediatrics/article/142/3/e20182058/38649/The-Power-of-Play-A-Pediatric-Role-in-Enhancing>

American Psychological Association – The Many Wondrous Benefits of Unstructured Play:

<https://www.apa.org/topics/children/kids-unstructured-play-benefits>

Verywell Family – Why Kids Need to Take Risks: <https://www.verywellfamily.com/why-risk-taking-is-healthy-for-kids-4118491>

National Association for the Education of Young Children – Eliminate Barriers to Risk-

Taking in Outdoor Play: <https://www.naeyc.org/resources/pubs/tyc/spring2023/risk-taking-outdoor-play>

Children & Nature Network – Risk-Taking in Natural Environments:

<https://www.childrenandnature.org/resources/research-digest-risk-taking-in-natural-environments/>

CDC – Parks, Trails, and Health: <https://www.cdc.gov/physical-activity-community-strategies-guide/pdf/Parks-Trails-Health.pdf>

World Health Organization – Global Age-Friendly Cities: A Guide:

<https://www.who.int/publications/i/item/9789241547307>



MEMORANDUM

Department of Public Services

DATE: August 8, 2025

TO: Parks and Recreation Board

FROM: Brad McNab, Parks and Recreation Foreman

SUBJECT: July Scavenger Hunt

During the Month of July, the Parks and Recreation Division of the Department of Public Services promoted a Parks and Recreation scavenger hunt. This was designed to encourage families to get outside and engage with all the parks that the City has to offer.

The scavenger hunt asked kids to push a friend on a swing, walk around Quarton Lake, go down a slide 10 times, count how many dogs they see, find some pollinators, and perform several other activities in the park systems.

The scavenger hunt was promoted on the city's Facebook page, the Parks and Recreation webpage, as well as the Ice Arena, the Library, the YMCA, and City Hall. The Library alone reported handing out more than 100 scavenger hunt checklists.

All kids who participated in the scavenger hunt received an official "Birmingham Junior Park Ranger" shirt and were entered to win a free birthday party at the Birmingham Ice Arena. We had a fantastic response, with 22 children returning completed scavenger hunt checklists. We are looking forward to planning our next great adventure.



Parks & Rec Scavenger Hunt

Go for a family walk in the park/trails



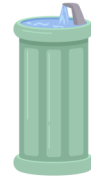
Push a friend on the swing



Mystery Clue #1 (Adams Park)



Locate a drinking fountain



Mystery Clue #2 (Pembroke Park)



Find a trail marker



Spot some birds



Walk all the way around Quarton Lake



Use the recycling can



Ride the spring rider for 5 minutes



Mystery Clue #3 (Crestview Park)



Go down a slide 10 times



Find a picnic table



See how many dogs you can spot



Mystery Clue #4 (Poppleton Park)



Race a friend



Find some pollinators



Mystery Clue #5 (Kenning Park)



Walk, bike or scooter to the park



Mystery Clue #6 (St James Park)



Whenever you visit one of Birmingham's beautiful parks between July 1-31, work on completing all of the tasks and mark them off.

Find the mystery clues posted in the message boxes throughout our various parks and write your answers in the correct square!

When you've completed it, drop it off at the Birmingham Ice Arena (2300 E. Lincoln) no later than August 8 for a free prize!

Name: _____ Age: _____

Phone: _____

Email: _____



BIRMINGHAM
JUNIOR PARK RANGER