



Parks and Recreation Board Agenda
Department of Public Services
851 South Eton-Conference Room
Tuesday, October 28, 2025
6:30 PM

- I. Call to order**
- II. Roll Call**
- III. Announcements, Introductions of Guests & Chairpersons Comments**
 1. Ad Hoc Senior/Recreation Center Committee (SCC) Update
- IV. Open To The Public for Items Not On the Agenda** *(two minutes per person)*
 - No one may speak a second time until everyone in the audience has spoken.
 - The chairperson may alternate speakers pro & con on issues being discussed.
- V. Approval of the minutes of: September 9, 2025** *(regular meeting)*
- VI. Unfinished Business**
 1. Michigan Natural Resources Trust Fund Grant Acceptance Resolution
 2. West Lincoln Well and Pumphouse Park Playground Update
 3. Poppleton Park Playground Improvements Update
- VII. New Business-** *Written and submitted by 5pm Monday at the Birmingham Ice Sports Arena, one week prior to the meeting.*
 1. Park Rules and Regulations
- VIII. Miscellaneous Communications**
 1. Poppleton Park Playground Communication
 2. Pickleball Communications
- IX. Reports From Staff**
- X. Items for Next Meeting on Tuesday, November 18, 2025**

XI. Adjournment

Individuals requiring accommodations, such as interpreter services, for effective participation in this meeting should contact the City Clerk's Office at (248) 530-1880 (voice) or 248-644-3405 (TDD) at least one day in advance to request mobility, visual, hearing, or other assistance.

Las personas que requieren alojamiento, tales como servicios de interpretación, la participación efectiva en esta reunión deben ponerse en contacto con la Oficina del Secretario Municipal al (248) 530-1880 por lo menos el día antes de la reunión pública.
(Title VI of the Civil Rights Act of 1964).

If you cannot attend the meetings, please contact Connie Folk at the Birmingham Ice Arena (248) 530-1642.

Minutes are available for review at the Birmingham Ice Sports Arena, 2300 East Lincoln, Birmingham, MI 48009

PARKS & RECREATION BOARD MISSION STATEMENT

The Parks and Recreation Board strives to provide opportunities for the enjoyment, education, and inspiration for present and future generations of residents and visitors through stewardship of natural, cultural and recreational resources. By continuously elevating the beauty and quality of the parks and recreation system of Birmingham, the Parks and Recreation Board will promote health and wellbeing, and strengthen the community.

You may also present your written statement to:
City of Birmingham, Parks and Recreation Board
851 South Eton, Birmingham, Michigan 48009 prior to the meeting.

City of Birmingham
Parks and Recreation Board Meeting Minutes
September 9, 2025, 6:30 p.m.
851 South Eton - Conference Room

I. Call To Order

The meeting was called to order at 6:30 p.m.

II. Roll Call

Present: Chair Heather Carmona, Vice Chair Pam Graham; Board Members Susan Collins, Jessica Einstein, Sarah Kupczyk, Anne Lipp; Alternate Board Member Narlu Castellano, Joseph Wrobel (not voting); Student Board Member Jack Bassett

Absent: Board Member Steve Sweeney; Student Board Member Abigail Murphy

Staff: Department of Public Services Director Zielinski; City Planner Blizinski, Ice Arena and Facilities Superintendent Folk, Parks and Recreation Coordinator Kirkwood, Parks and Recreation Manager Laird, Parks and Recreation Foreman McNab

III. Announcements, Introductions Of Guests & Chairperson Comments

1. Introduction of Clinise Kirkwood, Parks and Recreation Coordinator

IV. Open To The Public For Items Not On The Agenda

V. Approval Of The Minutes - August 5, 2025

Motion by Graham

Seconded by Lipp to approve the minutes.

Motion carried, 7-0.

ROLL CALL VOTE

Yeas: Castellano, Carmona, Kupczyk, Einstein, Collins, Graham, Lipp

Nays: None

VI. Unfinished Business

1. Poppleton Park Playground Improvements

Staff presented the item and answered informational questions.

Board members raised the following points during discussion:

- All contributors were thanked for their work on the proposal and for being responsive to community feedback.
- It should be noted in the proposal that existing trees are not shown on the map.
- Given that a significant majority of users walk or bike to the Park, and that the Board is trying to increase accessibility, it would be appropriate to provide a greater number of accessible parking spots.
- Adding a pole in the loading space of the accessible spots would help prevent vehicles from parking in the loading space.

- There was hope that the 10 foot swings would be tall enough for taller users to use. The idea of getting a nameplate for a particularly regular user of the swings was raised.
- Caregivers would likely adequately monitor their children when they are at the top of the play structure. Children will also likely be able to make their way back down when they climb up.
- There was a fair bit of support for adding monkey bars.
- There are other climbing opportunities in this proposal.
- The addition of more swings was in response to community demand.
- Staff should verify whether the mister might make wheelchair-accessible areas damp. It might be appropriate to move it away from that area.
- A custom color is likely not necessary. Children might enjoy the brighter colors.
- Some neighborhood residents preferred more muted colors, which was important for the Board to acknowledge.
- It was likely a more community-responsive use of funds to increase the number of swings rather than changing the structure to a custom color.
- The color options for the structure will likely be generally seen as an improvement over the present structures. This one will also be a bit more muted than some other nearby parks, which is appropriate because this is a neighborhood park.
- This proposal has more poured in place surface than the previous proposal.
- There should be two or three spinners installed.
- Having two different color umbrellas will be useful for wayfinding.
- The park could be laid out in a way to allow the addition of adult fitness equipment later on.
- Parallel parking had more support.
- The proposal should remove any pathways that will not be included, and the pathways should be drawn as closely to scale as possible.
- Fewer drawings, removing the winter drawings, and removing the previous drawings could make the presentation more streamlined.
- The curb could be cut only where there was safe loading and unloading for three accessible spots.
- Oxford Street could be painted with the available parking spots.
- Any options for an adult restroom changing station as part of the temporary restrooms should be explored further by staff.

Public Comment

Kelsey Howe supported a reduction in the use of poured in place surface due to environmental and health concerns, and supported the installation of monkey bars to encourage grip and upper body strength in children.

Kristi Lewis expressed gratitude for the changes to the swing sets and for the care shown towards the Lewis family.

Bella Fichtenberg commented regarding opportunities for younger and older children at the Park and supported the addition of monkey bars.

Motion by Lipp

Seconded by Kupczyk to approve the updated concept plan and playground layout for the Poppleton Park Playground Improvement project as presented, provided the following:

- A. We should add monkey bars;
- B. We should add more spinners;
- C. We should consider the placement and spread of the mister; and,
- D. We should consider the colors in connection with the wayfinding and muster points.

And to forward the foregoing to the City Commission for their consideration and final approval, together with recommending that the parallel parking option along Oxford Street be pursued with emphasis on accessible spaces.

Board member comment on the motion was as follows:

- The one spinner presently included in the proposal may be sufficient.

Motion carried, 7-0.

ROLL CALL VOTE

Yeas: Castellano, Carmona, Kupczyk, Einstein, Collins, Graham, Lipp

Nays: None

VII. New Business

1. 2026 Parks and Recreation Board Schedule

Motion by Kupczyk

Seconded by Einstein to approve.

Motion carried, 7-0.

ROLL CALL VOTE

Yeas: Castellano, Carmona, Kupczyk, Einstein, Collins, Graham, Lipp

Nays: None

VIII. Miscellaneous Communications

1. All Communications received - Poppleton Park Playground Improvements

IX. Reports from Staff

1. July Scavenger Hunt

PRF McNab and PRM Laird presented the item.

Board member comment was as follows:

- Birmingham schools do a Birmingham-themed curriculum for second graders. The schools might be interested in using the Parks' Scavenger Hunt as part of that curriculum.

X. Items for Next Meeting
1. Review of Park Rules and Regulations

XI. Adjournment

The meeting was adjourned at 7:54 p.m.



Connie Folk, Ice Arena and Facilities Superintendent

Laura Eichenhorn, City Transcriptionist



MEMORANDUM

Department of Public Services

DATE: October 22, 2025

TO: Parks and Recreation Board

FROM: Carrie Laird, Parks and Recreation Manager

APPROVED: Scott Zielinski, DPS Director

SUBJECT: Michigan Natural Resources Trust Fund Grant Acceptance Resolution

Administered by the Michigan Department of Natural Resources (MDNR), the Michigan Natural Resources Trust Fund (MNRTF) grants support state and local units of government with acquisition and development projects that promote natural resource based public recreation opportunities.

The Department of Public Services (DPS) submitted an application in early 2024 for a 2024 MNRTF grant for the Booth Park Entry Plaza & Trail Improvements project, and was recommended for funding in the amount of \$400,000 by the MDNR in December of 2024. The funding for the 2024 MNRTF Grant program was approved in October of 2025 by the State of Michigan.

Now that funding is approved, a resolution of acceptance of the grant is required by the MDNR as part of proceeding with the agreement between the City and the MDNR. As mentioned at previous Parks & Recreation Board meetings, the DPS has finalized the boundary map and legal descriptions, also requirements for the Project Agreement. Once all items are submitted to the MDNR and an agreement is finalized, the City will provide the Booth Park Entry Plaza & Trail Improvements plans and specifications to the MDNR for review and approval to bid out the project.

The resolution of acceptance of the grant and project agreement is slated for the November 17, 2025 City Commission meeting.



MEMORANDUM

Department of Public Services

DATE: October 23, 2025

TO: Parks and Recreation Board

FROM: Brad McNab, Parks & Recreation Foreman

SUBJECT: West Lincoln Well and Pumphouse Park Update

The Department of Public Services (DPS), Engineering, Penchura, and Michigan Recreational Construction (MRC) attended a pre-construction meeting on Wednesday, October 15th to discuss the new playground installations at West Lincoln Well and Pumphouse Parks. MRC began the construction the following day at West Lincoln Well. Prior to construction, DPS removed several items that are able to still be utilized. DPS also installed a time-lapse in order to make a video of the construction process. This video will be made available upon completion of the West Lincoln Well project.

The estimated time for completion for but West Lincoln Well and Pumphouse Park is 2 weeks per park, weather permitting. Construction for Pumphouse may begin during the ending of the West Lincoln Well construction as crews are made available.







MEMORANDUM

Department of Public Services

DATE: October 23, 2025

TO: Parks and Recreation Board

FROM: Carrie Laird, Parks and Recreation Manager
Scott Zielinski, DPS Director

SUBJECT: Poppleton Park Playground Improvements

INTRODUCTION:

Poppleton Park is 17.2 acres and classified as a community park. The City's Parks and Recreation Master Plan follows the guidelines of the National Recreation and Park Association (NRPA) in determining park classifications. The NRPA defines a community park as a public green space that serves multiple neighborhoods and a larger population than a neighborhood park. These parks are typically larger, though they can vary in size, and feature a diverse mix of active and passive recreation amenities.

As the Department of Public Services (DPS) continues implementing city-wide playground improvements, a priority of the Parks and Recreation Bond, Poppleton Park is next on the list. Priority playground improvements are described in the [2024-2028 Parks and Recreation Master Plan](#). Funding is budgeted this fiscal year in order to accomplish a fully inclusive, accessible playground at Poppleton Park. From initial discussions to finalizing the Parks and Recreation Bond improvements priority list in 2019, Poppleton Park's playground has long been envisioned to be the City's first fully accessible and inclusive playground.

BACKGROUND:

Citywide Playground Improvements

Penchura, LLC was awarded the City-Wide Playground Improvements four-year contract in April of 2025 ([Agenda/Minutes](#)). The scope of services for this contract is all encompassing playground work from design, purchasing the equipment, up to and including installation. Penchura was selected for their ability and expertise in designing for accessibility and inclusivity, a priority of our Parks and Recreation Master Plan, and their ability to provide exceptional play equipment (Landscape Structures) that the City has tested, is completely satisfied with, and is available through the Sourcewell purchasing program.

The Citywide Playground Improvements Project began with Pumphouse Park and W. Lincoln Well Park, currently being installed, and the DPS is continuing forward with planning for playground priority installations under this four-year contract with Penchura, LLC.

Poppleton Playground Design Background

An entire park master plan was prepared in 2016 for Poppleton Park, however because this is part of the Citywide Playground Improvement Project, the area of focus for this project is in the existing area of the playground and extending to the south, along Oxford. Because Poppleton Park is being designed with the intent to be fully accessible, the project includes accessible sidewalks up to and surrounding the play equipment and solid surface material throughout the play area. The concept design is also mindful of feedback the DPS and Parks and Recreation Board has heard over the past several years, such as the desire for shade and seating elements, places for gathering, bike racks and recycling. The DPS has budgeted for these features accordingly.

At the August 5, 2025 Parks and Recreation Board meeting ([Agenda/Minutes](#)), the City's selected playground designer reviewed an initial draft concept and facilitated feedback. The draft concept for the Poppleton playground has a very strong emphasis on inclusivity, utilizing elements for the wheelchair user, as well as a fully accessible main tower structure all the way to its highest point, and considered the only fully accessible tower on the market. Other features of the playground include wheelchair accessible swings and merry-go-round, and accessible seesaws. Plenty of play opportunities for children of all ages and abilities are also part of this design.

The improvements are intended to ensure access to the playground with solid surfacing throughout, and include installation of sidewalks leading up to and around the playground from Oxford Street, nearby accessible parking, shade elements, more seating, and more trees. Site amenities such as a drinking fountain, bike racks, trash and recycling receptacles and an area for temporary restrooms have also been included. A restroom building is not part of this project, as the department is researching different styles and options to include in the park system, but can be added at a later time. All items were reviewed at the August 5, 2025 and September 9, 2025 ([Agenda/Minutes in Draft Form](#)) Parks and Recreation Board meetings.

Community feedback incorporated as appropriate into an updated draft playground concept plan was solicited via the Parks and Recreation Board's Public Input Session on August 5, 2025; survey results from Engage Birmingham posted during the month of August; the Parks and Recreation Board meeting on September 9, 2025; and from any other form of communication such as email/letters. Overall, feedback included the desire for additional, taller swings for all ages, toddler swings, the inclusion of a bench swing, more shade elements, the addition of a sandbox, a mister pole, more opportunities for the 2-5 age group, more seating, and the addition of monkey bars and another spinner.

It is important to note, many comments received on Engage Birmingham were regarding shade and keeping existing trees. The concept plan has always included keeping the existing trees. It is the City's intent to keep all existing trees unless upon pre-project evaluation their condition or proximity to the project determines otherwise. If removal of tree(s) is necessary, at least two trees will be planted for every removal. In addition to keeping all existing trees, the concept plan includes numerous new, additional trees to be planted. The updated layout does include the

addition of one more shade canopy, now totaling three. The selected bench swing style creates shade for people using it as well.

There were some concerns expressed about the height of the tower, visibility into the tower from ground level, and the look and feel of the equipment. The larger structure with the tower play equipment in particular is designed for the 5-12 year-old age group, presenting numerous healthy challenges for all children, including those with disabilities. Staff visited Lapeer Park in Dearborn to observe a Vole Aire structure similar in style to what is proposed for Poppleton Park. The inside of the top of the tower was visible from ground level. Staff witnessed a variety of ages using the structure. Parents were asked about visibility; they did not have any concerns.

Other feedback included requests for adding more to the park than what is called for during this phase of playground improvements. Permanent accessible restrooms with adult changing tables, fitness equipment, more walking paths, a basketball court, and improvements to the ballfield were some of the ideas presented. The opportunity to include these items may occur during a future phase of improvements to Poppleton Park, yet to be determined.

Reviews

The draft concept plan was reviewed by the staff liaisons to the Multi-Modal Transportation Board (MMTB), as pertinent items such as accessible sidewalks and bike racks are included. The concept was reviewed pertaining to how it relates overall to the [Multi-Modal Transportation Plan](#). The Planning Department also considered the [2040 Birmingham Plan](#) during review of the draft concept plan for Poppleton Park.

Parking Review

At the September Parks and Recreation Board meeting, the board reviewed parallel and angled parking options under consideration by DPS, Engineering, and the Police Department (PD). Each of the departments are in favor of adding ADA parking spaces off of Oxford for the new inclusive playground equipment.

Items considered by the Parks and Recreation Board included: the number of spaces available, safety, providing for as many accessible spaces as possible, loading zones, whether striping and signage should be used, and limiting the impact on green space. Ultimately the Parks and Recreation Board made a motion recommending the parallel parking option be considered.

Now that designs for both parallel and angled parking are available, and the City Commission meeting to consider Poppleton Park playground for approval has been postponed until November 17, 2025, the Parks and Recreation Board has opportunity to further discuss and advise on parking options. The direction given to the architect was to present options for either parallel or angled parking to determine how many spaces *could* be accomplished for each option.

LEGAL REVIEW:

The City Attorney conducted a review of the contract with Penchura earlier this year.

FISCAL IMPACT:

The 2025-2026 Approved budget for the [Poppleton Park fully inclusive play area](#) including sidewalks and site amenities is \$1,080,000. There is currently \$1,000,000 designated utilizing the Parks System Construction Fund under the Parks and Recreation Bond Issue, and \$80,000

designated using General Fund dollars. The cost estimates for the Poppleton Park Playground Improvement are currently estimated at approximately \$1,500,000. A budget amendment will be required in order to proceed with all elements of the concept plan.

Other park projects budgeted for this fiscal year include design work for Kenning & St. James park (\$300,000), Pembroke Park playground improvements (\$600,000), and Booth Park Entry Plaza & Trail Improvements (\$1,700,000).

The Birmingham Rotary Club and the City are currently in the process of finalizing an agreement for a contribution of \$50,000 toward the Poppleton Park Playground Project in honor of their 100 year celebration last year.

The City continues to offer donation opportunities for Poppleton Park improvements, and is planning for an upcoming campaign for Poppleton through the City's website at bhamgov.org/donate.

PUBLIC COMMUNICATIONS:

A robust notification program for the Poppleton Park playground Public Input Session was implemented in advance of the August 5, 2025 Parks and Recreation Board meeting. Due to Poppleton being a community park, postcards were mailed to every resident, flyers were distributed throughout Birmingham neighborhoods, lawn signs were posted in the neighborhood of Poppleton Park and at other community parks such as Barnum. Social media and [Around Town e-newsletter promotions](#) were utilized, in addition to a press release. A survey was available on Engage Birmingham from August 6 through August 22, 2025 for the draft playground concept.

The [September edition of the Around Town e-newsletter](#) was utilized to promote the September 9, 2025 Parks and Recreation Board meeting with the updated playground draft concept plan.

SUSTAINABILITY:

The playground equipment by Landscape Structures incorporated in this design offers the most comprehensive warranties leading to a longer lifespan. Landscape Structures is International Organization for Standardization (IOS) certified, meeting quality and environmental standards. The equipment additionally meets or exceeds standards for equipment set by the International Play Equipment Manufacturers Association (IPEMA) Consumer Product Safety Commission (CPSC), ASTM International (formerly the American Society for Testing and Materials), Canadian Standards Association (CSA), and European Committee for Standardization (ECS), among others.

The design incorporates a holistic approach and consideration is given to drainage, shade structures, native trees, and incorporating recycled products, all contributing to a sustainable end product.

DESIGN CONSIDERATIONS:

Accessibility & Inclusion

Accessibility has been one of biggest topics of discussion over the course of the playground equipment replacement planning process. Goal #1 of the [2024-2028 Parks and Recreation Master Plan](#) is to provide parks and recreation facilities that are accessible to all residents of the community, are beautiful and high quality, respect history, and offer a variety of experiences,

both passive and active. With the Citywide Playground Improvements Project, the DPS intends to create inclusive play areas for all ages and abilities to engage in play together.

Poppleton Park's playground will be fully inclusive with a complete Poured-In-Place (PIP) surface. The playground features wheelchair accessible items such as a merry-go-round and swing. The main tower structure is accessible all the way to its highest point. It is important to note that the intent of this design is to include children of all abilities when selecting appropriate equipment. This structure is an attraction for all children, including those with disabilities, presenting healthy challenges and play opportunities for all abilities in an inclusive environment where all play together.

Much of the play equipment is able to be enjoyed by older age groups or multi-generations. The accessible we-go-round and we-go-swing both have ample room for all shapes and sizes, and are easy to access for seniors to enjoy with grandchildren. The accessible seesaws are another example of equipment that allows for a wide variety of ages to experience together. They have roomy seats, and a big area in the center for anyone to sit and participate in the fun.

Passive recreation of this design includes the open lawn area, available for lawn games or reading a book on a blanket. Numerous benches, a swing bench, shade elements and areas for gathering are all considerations to provide for inclusive design.

Other Park Site Amenities

The DPS budgets annually for system-wide park site furnishings and amenities. Depending on need, items could include benches, receptacles, tables and chairs, picnic tables, new fencing, bike racks, drinking fountains and more. With each playground equipment project, including Poppleton, the DPS plans to include these items as appropriate.

SUMMARY:

Inclusive play is a top priority of the recently updated 2024-2028 Parks and Recreation Master Plan, and includes a recommended prioritization of inclusive playground installation based on a synthesis of information gathered or generated during the planning process. Poppleton is one of the highest ranking playgrounds for priority replacement with a fully inclusive playground.

This playground concept plan has a multitude of opportunities for play for all ages and especially all abilities. Kids of all ages and abilities are attracted to this play structure, meeting our goal of inclusivity and an environment in which all children, including those with physical or special needs challenges are able to play together. This playground will be a showcase piece for Birmingham, our first fully inclusive playground. There will be plenty of screening with existing trees and new trees between the playground structure and nearby residents, yet balanced so that visibility of the tower will remain for the caregiver of the children exploring the structure.

The concept for Poppleton Park is designed with thoughtful intent of inclusivity and has also incorporated feedback received from the community and Parks and Recreation Board as appropriate, with the addition of taller in height (10 ft) swings for all ages, toddler swings, a bench swing, another shade canopy over a sandbox for a total of three shade structures, a mister pole, more play opportunities for the 2-5 age group, more seating, monkey bars, an additional spinner, and using color to define gathering or muster areas and wayfinding within the park.

ATTACHMENTS:

- Poppleton Site Concept Plan, Playground Layout and 3D Renderings
- Parking Options

SUGGESTED BOARD ACTION:

To approve the updated draft concept plan and playground layout for the Poppleton Park Playground Improvement Project as presented, and to forward to the City Commission for their consideration and final approval,

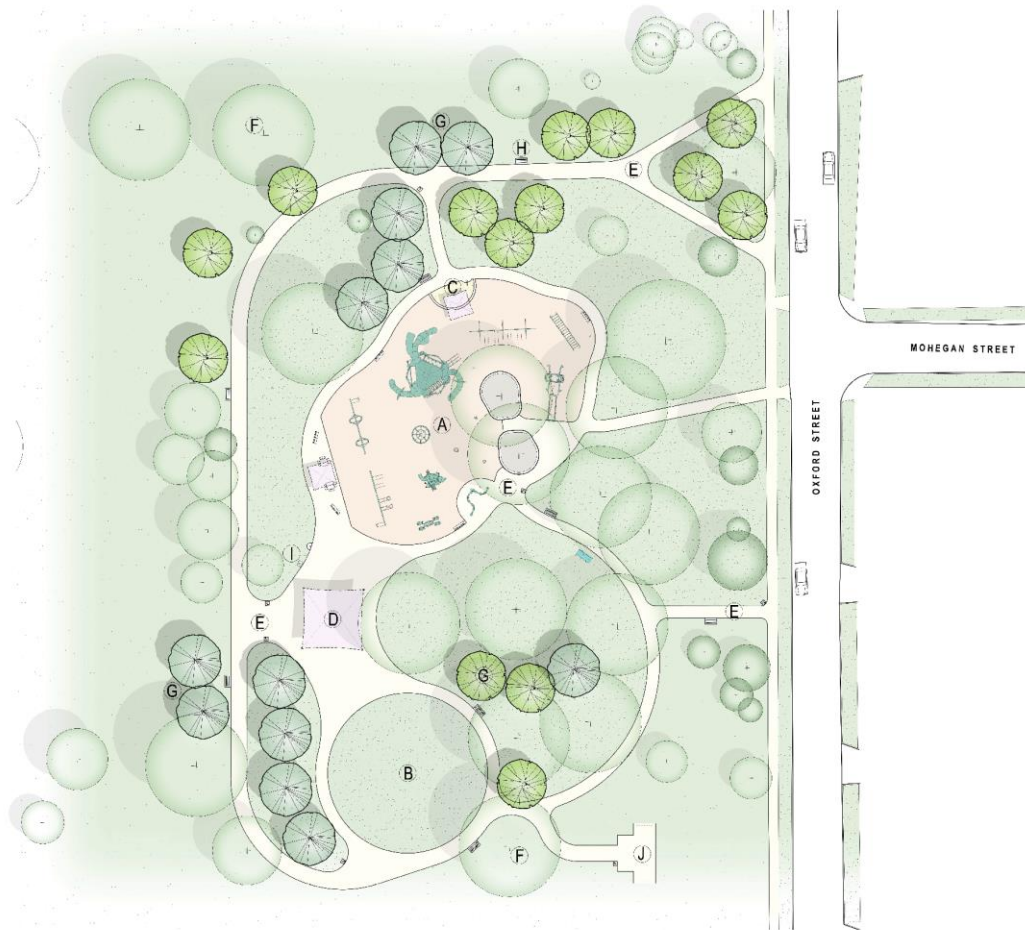
AND,

To recommend the parallel parking option along Oxford Street,

OR

To recommend the angled parking option along Oxford Street

Poppleton Park Site Layout



KEY:

- A PLAYGROUND
See Sheet L2
- B LAWN/ACTIVITY SPACE
- C SANDBOX
- D SHADE STRUCTURE
- E CIRCULATION PATH(S)
- F EXISTING TREES (TYP.)
- G PROPOSED TREES (TYP.)
- H BENCH (TYP.)
- I DRINKING FOUNTAIN (TYP.)
- J RESTROOM

dūL
LANDSCAPE
ARCHITECTURE

437.444.3270
437.444.3270

Sm
**landscape
structures**

Poppleton Park
466 Riverside Street,
Barrington, VT 05803

PROJECT

Landscape Development
OVERALL SITE PLAN

SHEET TITLE

1" = 20' 0"

SCALE



DESIGN: MARCH 2017
DATE: 03/08/17

L1



KEY:

- (A) PLAYGROUND
See Sheet L2
- (B) LAWN/ACTIVITY SPACE
- (C) SANDBOX
- (D) SHADE STRUCTURE
- (E) CIRCULATION PATH(S)
- (F) EXISTING TREES (TYP.)
- (G) PROPOSED TREES (TYP.)
- (H) BENCH (TYP.)
- (I) DRINKING FOUNTAIN (TYP.)
- (J) RESTROOM



248.644.3410
duldesign.com



Poppleton Park
485 Rivenoak Street
Birmingham, MI 48009

PROJECT

Landscape Development
OVERALL SITE PLAN

SHEET TITLE

1"=20'-0"
NORTH

SCALE

PROJECT NUMBER: 25177
DATE: October 7, 2025
REVISIONS:

Poppleton Park Site Layout



ls
landscape
structures

Poppleton Park

1194652-01-04-10 · 09.22.2025

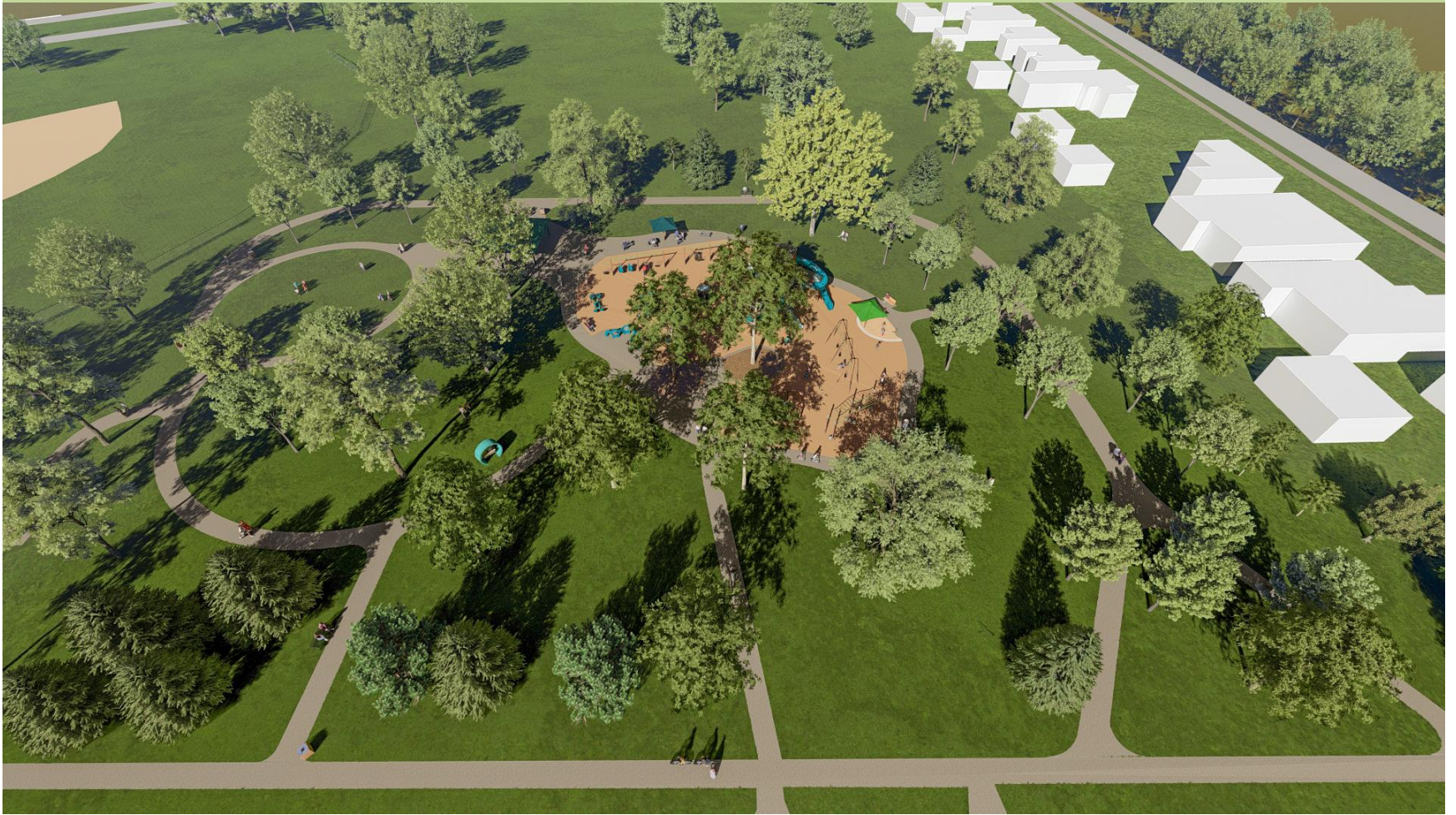
 Penchura

©2025 Landscape Structures. All Rights Reserved.

Poppleton Park Site Layout



Poppleton Park West View



Poppleton Park South View



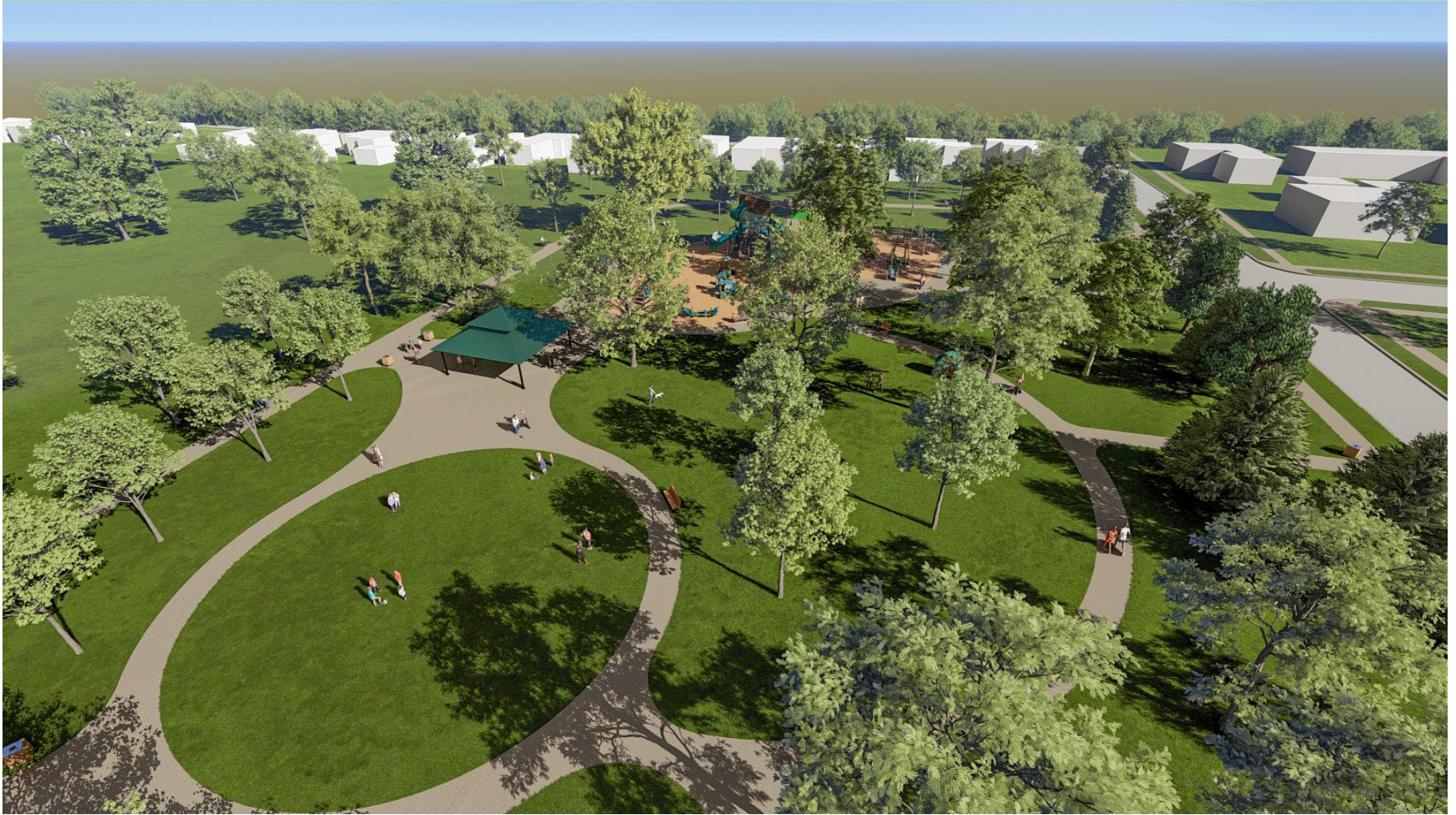
Poppleton Park North View



Poppleton Park Northeast View



Poppleton Park Northwest View



Poppleton Park Playground Layout



KEY:

- A 10' SWING
- B WE-GO SWING
- C SANDBOX
- D OVERHEAD LADDER
- E VOLO AIRE
- F SPINNER
- G WE-GO ROUND
- H FLEXX SWING
- I MOTION STRUCTURE
- J WE-SAW
- K SINGLE POST SWING
- L SENSORY WALL
- M UMBRELLA
- N SHADE STRUCTURE
- O NOBLEWINS SWING

dUL
LANDSCAPE
ARCHITECTURE
1474 Oak Street
Birmingham, AL 35203

SLR
**landscape
structures**

Poppleton Park
445 Riverchase Street
Birmingham, AL 35209

PROJECT

Landscape Development
PLAYGROUND PLAN

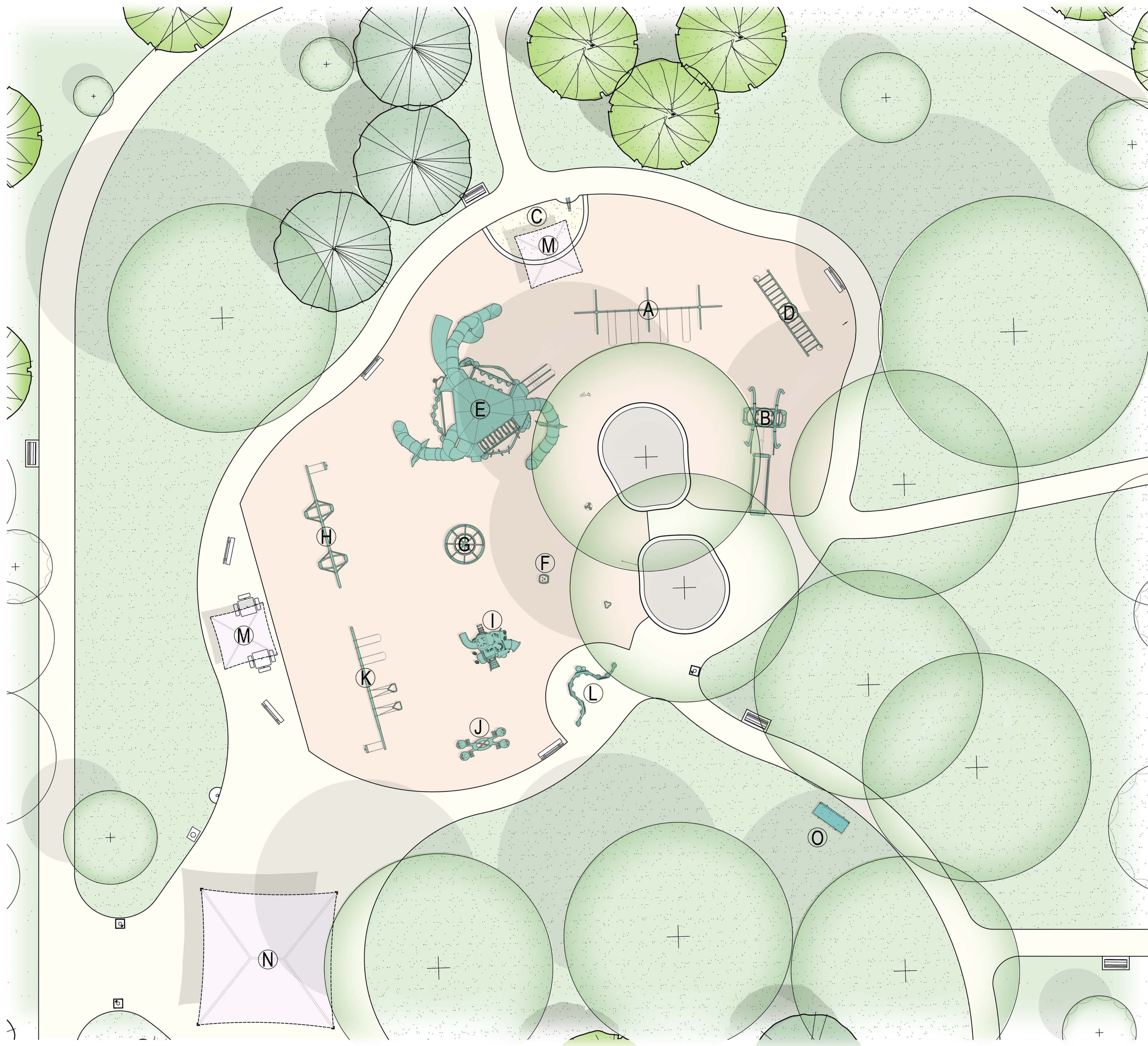
SHEET TITLE

1" = 10' 0"

SCALE

PROJECT NUMBER: 2011-0006-1-203
DATE: October 1, 2011
SHEET NO.

L1



KEY:

- (A) 10' SWING
- (B) WE-GO SWING
- (C) SANDBOX
- (D) OVERHEAD LADDER
- (E) VOLO AIRE
- (F) SPINNER
- (G) WE-GO ROUND
- (H) FLEXX SWING
- (I) MOTION STRUCTURE
- (J) WE-SAW
- (K) SINGLE POST SWING
- (L) SENSORY WALL
- (M) UMBRELLA
- (N) SHADE STRUCTURE
- (O) NOBLEWINS SWING

Poppleton Park
485 Rivenoak Street
Birmingham, MI 48009

PROJECT

Landscape Development
PLAYGROUND PLAN

SHEET TITLE

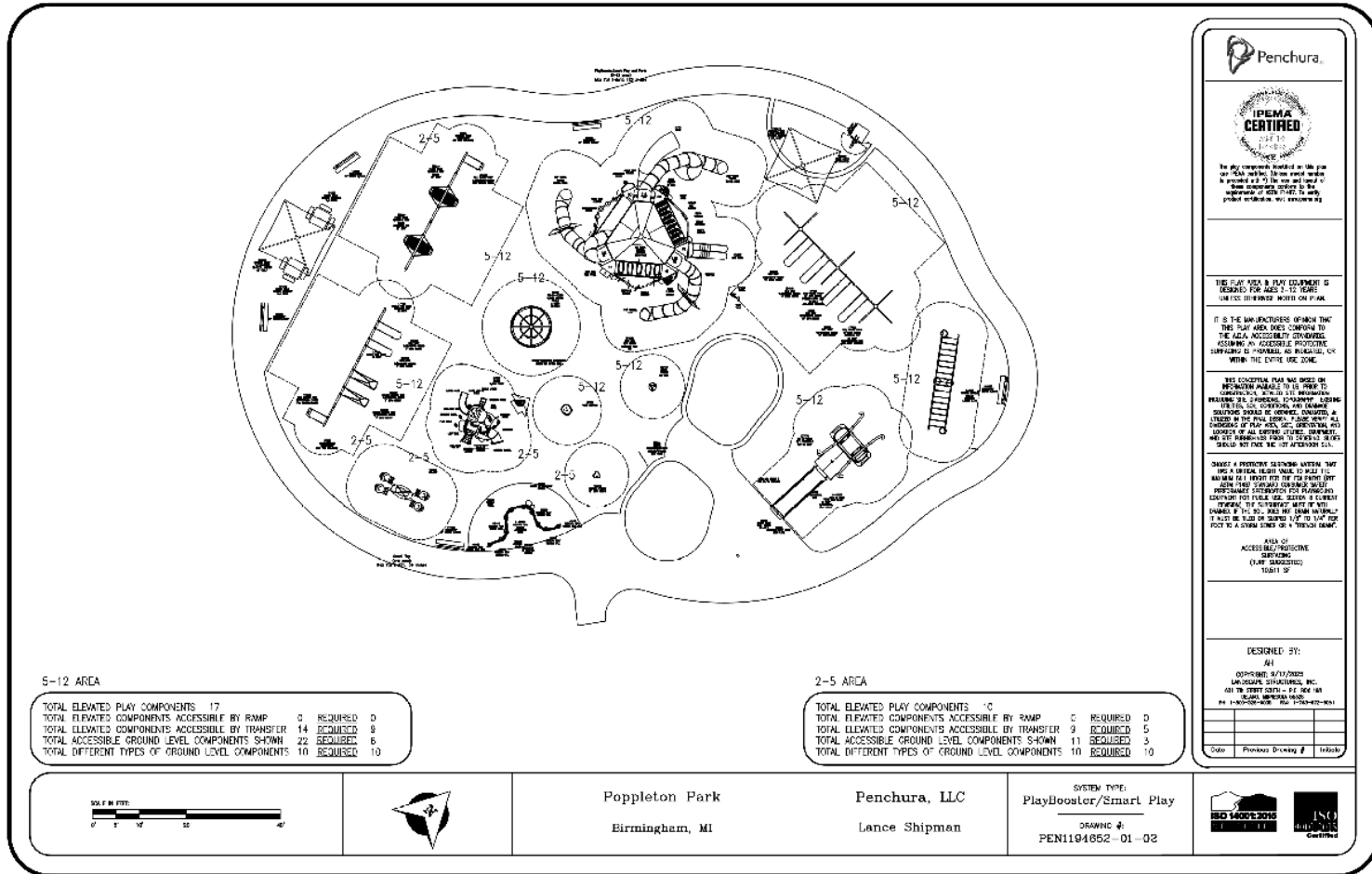
1" = 10'-0"



SCALE

PROJECT NUMBER: 25177
DATE: October 7, 2025
REVISIONS:

Poppleton Park Playground Layout



Poppleton Park Playground Layout



Playground approach from the East



Playground approach from the East



Playground approach from the East



Playground approach viewing South



Playground approach viewing Northeast



Proposed Shade Structure viewing Northeast



View across circular activity space



Playground approach viewing Northwest



Playground approach viewing Northwest



View of proposed swing bench



Playground approach viewing West



Main playground approach



View of We-Go-Swing



View of “Monkey Bars”



View of 10' swing and sandbox



View of Playground from North



View of Volo Aire



View of Volo Aire and Flexx Swing



View from shaded seating area



View from playground from shade structure



View playground looking North



View of sensory playcenter



View of primary playground entrance



View of 2-5 Smart Play Motion



View of 5-12 Volo Aire



View of 5-12 Volo Aire



View of 5-12 Volo Aire



lms
landscape
structures

Poppleton Park

1194652-01-04-06 · 09.22.2025

 Penchura

©2025 Landscape Structures. All Rights Reserved.

View of 5-12 Volo Aire



Poppleton Park

1194652-01-04-03 · 09.22.2025



©2025 Landscape Structures. All Rights Reserved.

THANK

YOU



Poppleton Park
485 Rivenoak Street
Birmingham, MI 48009

PROJECT

Landscape Development
PARKING CONCEPTS

SHEET TITLE

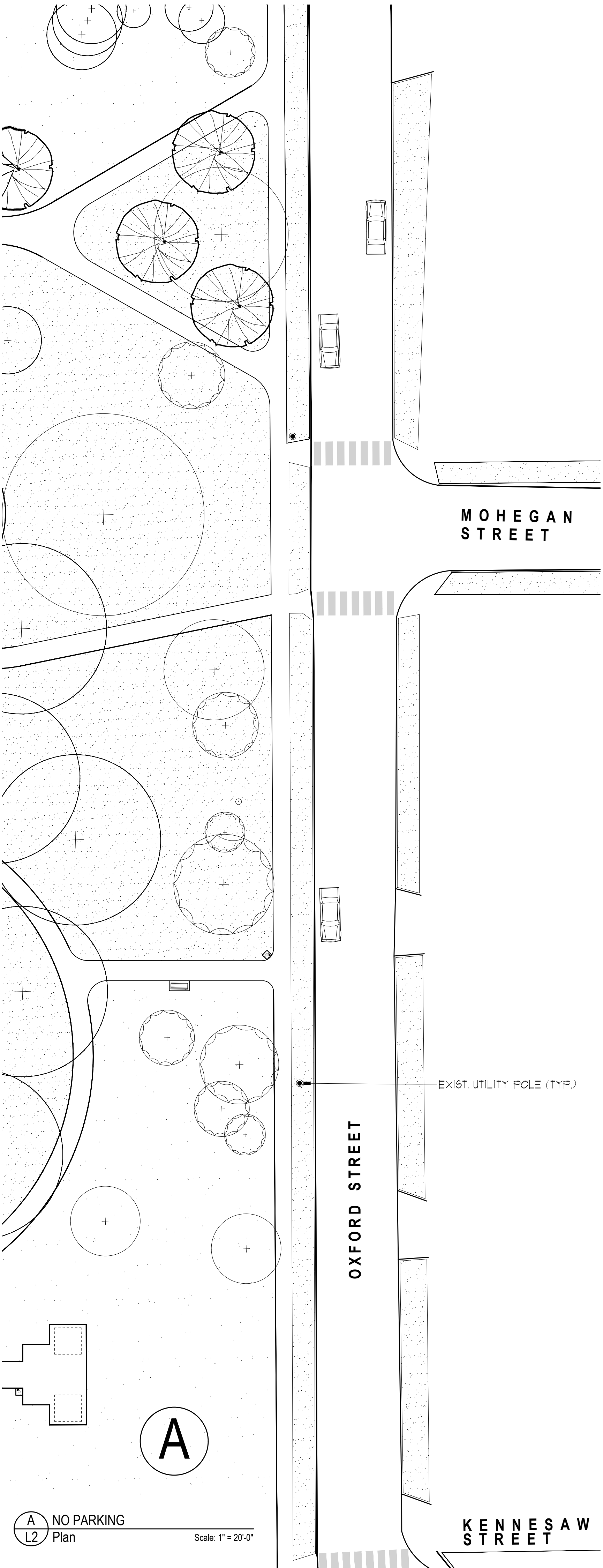
1"=20'-0"



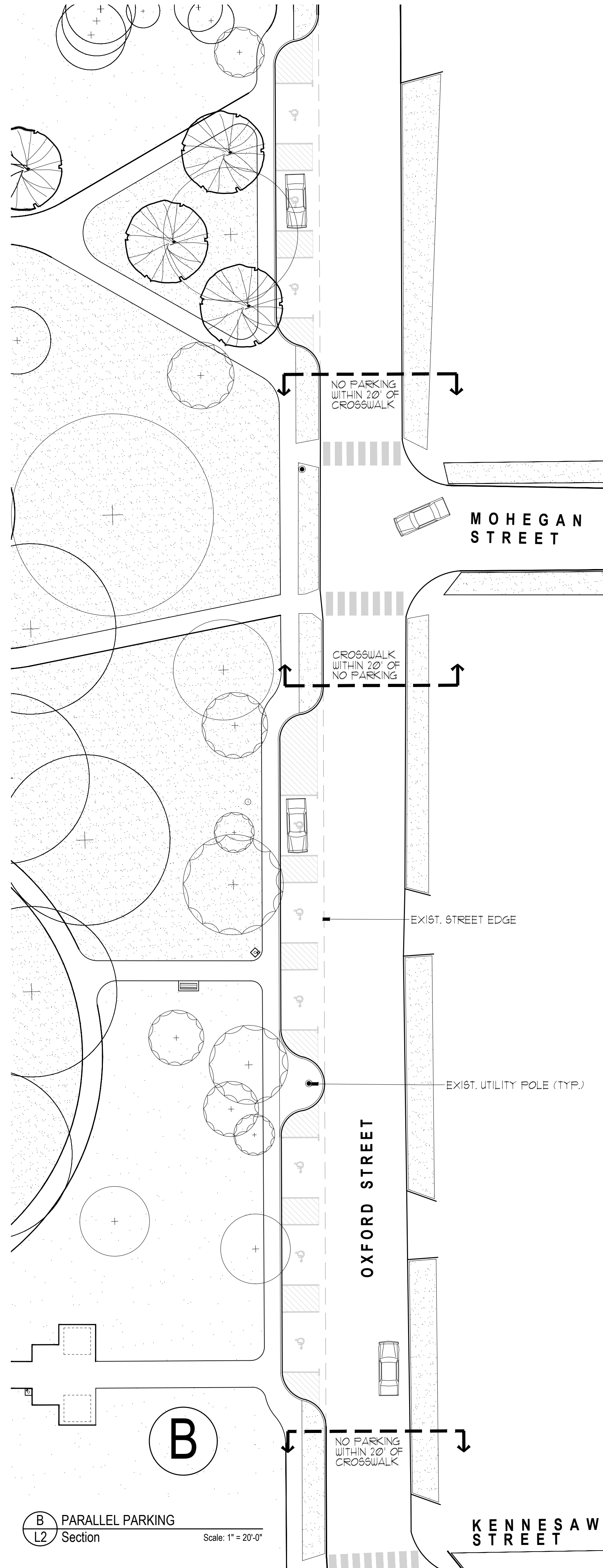
SCALE

PROJECT NUMBER: 25177
DATE: October 17, 2025
REVISIONS:

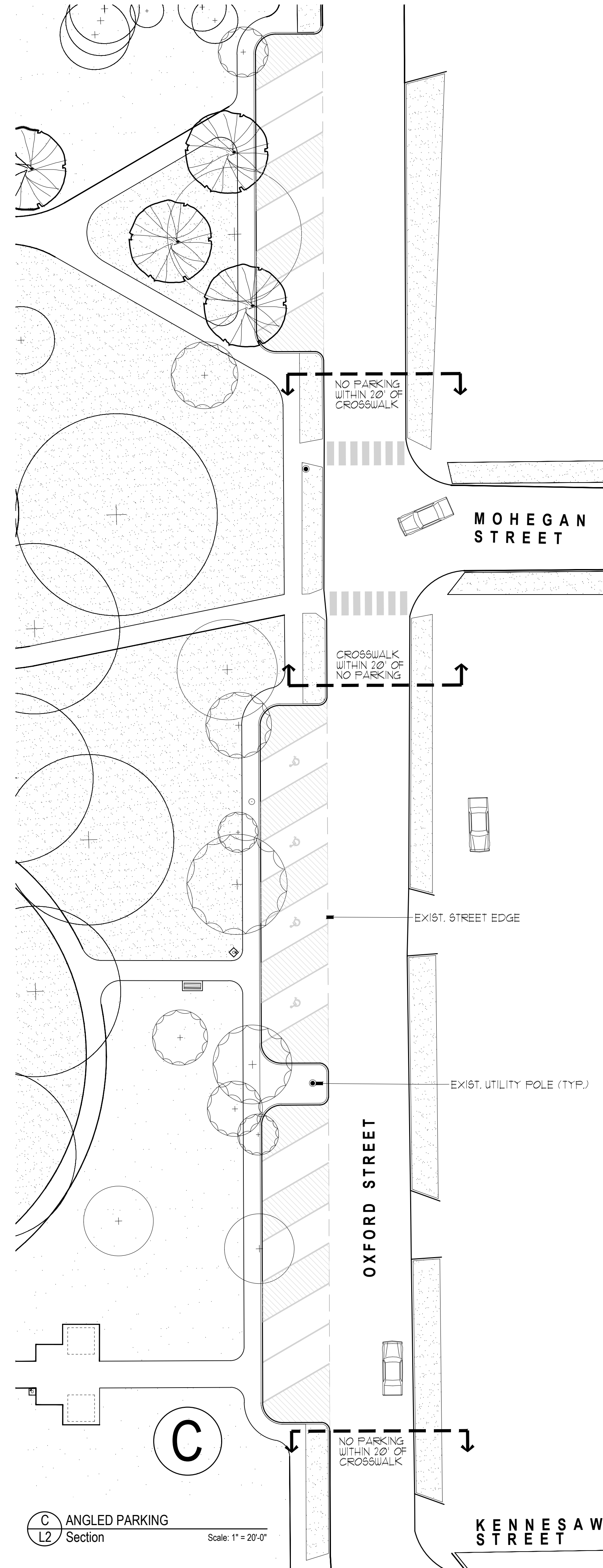
L2



A NO PARKING
L2 Plan
Scale: 1" = 20'-0"



B PARALLEL PARKING
L2 Section
Scale: 1" = 20'-0"



C ANGLED PARKING
L2 Section
Scale: 1" = 20'-0"



MEMORANDUM

Department of Public Services

DATE: October 23, 2025

TO: Parks and Recreation Board Members

FROM: Carrie Laird, Parks and Recreation Manager

SUBJECT: Park Rules and Regulations

INTRODUCTION:

The City of Birmingham Park Rules and Regulations have been in place for many years, and are regularly reviewed and updated as necessary. The Parks and Recreation Board recommends the updated rules to the City Commission for adoption. Once adopted, the Park Rules are incorporated into the City Ordinance, as appropriate. The most recent version of the Park Rules and Regulations was approved by the City Commission in March, 2021.

BACKGROUND:

The Park Rules and Regulations are available on the Birmingham Website, and a select few rules are posted on park signs located at each park throughout the City. A QR code on the park signs links to the Park Rules and Regulations on the city website.

The Department also posts supplemental signage in different areas, such as "Dogs Must be Leashed", "No Dogs in the Play Area", "Fishing Allowed for ages..." and various parking restrictions throughout the park system.

Additionally, Tennis Courts, the Dog Park and the Skate Park have rule signs posted specific to each area.

As recommended by the Parks and Recreation Board in the past, we have included all posted rules so that we complete a comprehensive review of our Rules and Regulations.

Based on the recommendations from the August 13, 2024 Parks and Recreation Board meeting the recommended changes are shown in red for the Park Rules and Regulations, including language that is posted at the Skate Park, Dog Park and all Tennis Courts and Pickleball.

Park Rules and Regulations- Recommended Changes:

New Rule 1: Use of City Parks and Facilities & Park Permits

Users of City of Birmingham parks and facilities, including but not limited to, the following: the skate park, the dog park, tennis courts, and pickleball courts are expected to abide by the rules posted at each individual facility.

Rule 18: Fireworks, Sky Lanterns & Explosives

No person shall bring into a park, or public property or have in his possession, or set off or otherwise cause to explode any firecrackers, torpedo, rocket, sky lanterns, fireworks or explosives, or discharge them or throw them into any park area from land or property adjacent thereto.

Add New Rule 19: Drone Usage (includes remote control planes)

The general public is not permitted to use drones within the City of Birmingham's park system. Drones may be used to conduct official City business such as aerial mapping, by law enforcement, or other City led activities only.

Rule 20: Obstruction; Damage; Fence; Disposal

No person shall obstruct any walkway or driveway in any public park or playground. No person shall injure, mar or damage, in any manner, any monument, ornament, fence, bridge, seat, tree, fountain, shrub, herbaceous plant, flower, playground equipment, or other public property within or pertaining to such parks.

Add New Rule 22: Metal Detecting

The use of a metal detector must be approved by the Department of Public Services by issuance of a park permit. No digging with the use of a metal detector.

Rule 26: Boating

No person shall place or operate any boat including remote control propelled by any engine in or upon waters in any park in the city, including the water of Quarton Lake. Removed duplicate language.

Rule 27: Fishing and Wildlife

No person shall feed any animals including deer, cats, geese, ducks, birds or other fowl in any City Park or any municipal Golf Course.

Rule 28: No person shall feed any animals including deer, cats, geese, ducks, birds or other fowl in any City Park or any municipal Golf Course.

New Rule 34: Electric Bikes (e-bikes)

Class 1 and Class 2 e-bikes are permitted in all City of Birmingham parks and trail systems within city limits. Class 3 e-bikes and out of class e-bikes are not allowed.

Definitions:

Class 1 e-bike is fully operable pedals and an electric motor that provides assistance only when the rider is pedaling, up to a maximum speed of 20 mph. These bikes do not have a throttle, and they are generally allowed on the same paths and trails as traditional bicycles.

Class 2 e-bike is propelled by either the throttle or pedal-assist, with a maximum assisted speed of 20 mph. Unlike Class 1 e-bikes, Class 2 models have a throttle, allowing the rider to use the motor without pedaling. They are suitable for both commuting and recreation, especially for those who want to reduce physical strain or navigate city streets with ease.

For more information about e-bikes, please visit ebikes.org

Posted Signage- Recommended Changes:

Skate Park-No Recommended Changes

Dog Park- Recommended Changes

- **Add:** Any dog park user involved in a dog related incident will have their access to the dog park temporarily suspended and must file a report with the police department. Once the police investigation has concluded, the involved aggressive dog or dogs must be evaluated by a certified animal behaviorist or veterinarian. This evaluation must be completed and submitted to the Parks and Recreation Office for review to determine whether the dog(s) will be permitted to re-enter the dog park.

Tennis Courts-Recommended Changes:

- No in-line skates, skateboards, bicycles, wagons, roller-skates, **electric boards** or scooters.
- Private instructions and classes are allowed **by permit only**. All instructors must secure a permit through the Parks and Recreation Office, provide liability insurance and sign a hold harmless agreement before use of the courts. A permit fee of \$20 per court per hour applies. Any instruction without permit will be considered a rule violation and subject to penalty.
- No ball playing of any kind other than tennis. **Pickleball is only permitted at Crestview pickleball courts, Poppleton multi-purpose court or any courts designated by the Department of Public Services.**

This summer there have been multiple instructors not following the current requirement about receiving permission from the Department of Public Services, not providing insurance and not paying the minimum fee of \$5/per court for two hours.

Staff has reached out to the instructors in multiple ways but yet they continue not to follow the rules. One of the instructors created a false name and address to reserve the tennis courts, another kicked off a Birmingham resident indicating that they had booked the courts and that the City of Birmingham's reservation system allowed a double booking.

Pickleball Courts-Recommended Changes:

Private classes are not allowed. **Remove the rest:** without written permission from the Parks & Recreation Office. In addition, the established fee of \$5/court for private classes applies for every 2 hours reserved.

Add: Open Play is defined as a casual, organized session or period of time for players of all skill levels to show up and play together, in a rotational fashion, for recreational purposes. Open Play

is not available for tournaments. All six courts are available for Open Play during the designated hours. All skill levels of players (beginner, intermediate, advanced) are welcome for Open Play.

Remove: Paddles/balls are available for rent at the Parks and Recreation Office

Staff has received comments regarding the open play rules and the allotted time for reservations. To address this, staff will be developing a survey to gather additional feedback from pickleball players. This survey will be available on Engage. Temporary signs with a QR code will be installed at the pickleball courts to direct participants to the Engage page to participate in gathering information. A link to the survey will also be emailed to those who reserve the pickleball courts.

LEGAL REVIEW:

The City Attorney will be reviewing the proposed changes to the Park Rules and Regulations in advance of City Commission approval.

FISCAL IMPACT:

Upon approval of the updated rules by the Parks and Recreation Board and the City Commission, new signs will be ordered and park maintenance staff will replace signs with updates.

Dog Park:

Replace 1 (one) Dog Park Sign

New Sign: \$300

Labor to remove and replace: \$300

Total: \$600

Tennis Court:

Replace 6 (six) Tennis Court Signs

New Sign: \$300

Labor to remove and replace: \$300

Total: \$2,100

Pickleball Court:

Replace 1 (one) Pickleball Sign

New Sign: \$300

Labor to remove and replace: \$50

Total: \$350

Grand Total: \$3,050. There are funds available for park signs in the 2025-2026 budget.

SUGGESTED RESOLUTION:

To approve the updated Park Rules and Regulations and updated language on posted park signage. Further, to recommend the Park Rules and Regulations be considered for adoption by the City Commission.

Park Rules and Regulations

Use of City Parks and Facilities & Park Permits

1. Users of City of Birmingham parks and facilities, including but not limited to, the following: the skate park, the dog park, tennis courts, and pickleball courts, are expected to abide by the rules posted at each individual facility.

2. The use of any City of Birmingham park or facility is at your own risk. The City does not assume responsibility for injury or for any loss, theft or damage to personal items.

3. A rental permit is required for reservation of all city facilities. No refund of the rental fee shall be made due to inclement weather. Park permits may not be assigned or otherwise transferred. A hold harmless agreement must be executed in order to obtain a permit.

4. A person holding a park permit shall maintain such permit in his or her possession at all times while utilizing the municipal facility. Such permit shall be presented by its holder upon request by a City official or employee. A permit does not give its holder exclusive use of the entire park, except for Springdale Shelter.

5. All set-up/clean-up must be done by the permit holder.

6. All parks must be maintained and left in a neat and clean condition, with garbage and refuse prepared for proper disposal. The person or entity in whose name the rental permit is issued shall be responsible for leaving the facility in a clean and orderly condition. Further, the permit holder accepts full responsibility for all damage to City property as a result of its activities. A fee may be assessed should clean up or repair by the City become necessary. This fee shall include, but is not limited to, all labor, equipment and administration expense incurred by the City.

7. Any equipment, valuables, or clothing left in or around the park shelter on closing shall be kept at the City of Birmingham Parks and Recreation office for two weeks. Contact the office at (248) 530-1642 to make arrangements for pick-up.

8. The City reserves first priority with regard to the use of all City Parks. A park permit grants its holder a permit to use the park or public property for a specified date and time and is revocable by the City. The City may order revocation of a park permit, at any time

with refund of fees paid, and all permits are granted with this understanding.

9. The Director of Public Services may, subject to the approval of the City Manager and the City Commission, establish supplemental regulations for all uses requiring the issuance of a permit for use of municipal facilities and fees for the use of the various facilities.

Alcoholic Beverages & Intoxicants

10. It shall be unlawful for any person to possess or consume any alcoholic liquor, intoxicants, including spirits, beer or wine, in any recreational facility, city owned property or park operated by the City or during any function, sporting event, skating exhibition, dance or other event; unless such alcoholic beverages were purchased on city owned premises from a duly licensed vendor or served in accordance with a Special Event permit issued through the City Clerk's office. Birmingham Golf Courses have MLCC-issued liquor licenses.

Smoking

11. Smoking of tobacco or any other substance, or smoking, consumption or use of marijuana products, or use of vapor producing products such as an e-cigarette or similar device, is strictly prohibited pursuant to city ordinance, in all buildings, facilities, parks and playgrounds operated and maintained by the City of Birmingham.

Park Hours

12. City parks and public property are open between the hours of 6:00 am to 10:00 pm except as noted below or as posted. Between the hours of 10:00 pm to 6:00 am, parks and public property are closed and during such hours, no person shall enter into or remain on such property, except those persons whose presence is related to or in connection with a municipal activity.

(1) Springdale Park hours shall coincide with Springdale Golf Course hours and park rentals. The closing of the park is up to the discretion of the City of Birmingham Representative on duty.

(2) The Skate Park shall be closed from 10:00 pm to 8:00 am.

For purposes of this section, public property shall be deemed to be property zoned as public property under the provisions of chapter 126.

Animals

13. Leashed dogs are allowed in any public park except in those areas as designated and posted by the Department of Public Services. Dogs are allowed on public property as long as they are restrained by a six foot maximum length chain or leash and under the reasonable control of some person. Owners and walkers of dogs on public property must comply with all City ordinances, including Chapter 18, Article II, pertaining to dogs and cats.

Sec. 18-33 Restraint of dogs.

It shall be unlawful for any owner of any dog to permit the dog to go beyond the premises of such owner unless restrained by a chain or leash and under the reasonable control of some person. (Code 1963, § 9.80(1))

14. Dogs are not permitted in any public playground or in any **other** area designated by the Department of Public Services. These areas shall generally include, but shall not be limited to, areas under and immediately adjacent to play structures and play equipment; sandboxes; the playing surface of ball fields, soccer fields, tennis courts, outdoor ice rinks, golf courses and sledding hills, when such areas are in use; pavilions and stages; fountains; and in areas designated for City permitted events and functions of concentrated use during said event or function.

Sanitation

15. The owner or walker of a dog is responsible for the collection of all fecal matter and the disposal of such fecal matter in an appropriate city waste receptacle or in accordance with ordinance Section 18-35 Sanitation.

Sec. 18-35 Sanitation.

(a) It shall be unlawful for any person to permit any animal owned or harbored by him to deposit fecal matter in any place other than the premises where the animal is harbored or kept, unless such fecal matter is immediately collected and removed to the premises where the animal is harbored or kept.

(b) It shall be unlawful for any person to walk any animal on any property not owned by such person, whether public or private, unless such person has an appropriate device for the collection of fecal matter in his immediate possession and an appropriate depository for the transmission of fecal matter to the premises where the animal is harbored or kept.

(Code 1963, § 9.95; Ord. No. 1586, 4-18-94)

Sound Amplification

16. The use of loudspeakers or other sound enhancing equipment for the amplification of sound or music is prohibited, unless allowed by permit issued by the City. Any amplification must be reasonable as to not disturb the peace.

Fires

17. Open burning of any kind is prohibited at all city parks and facilities. No person shall drop, throw, or otherwise scatter lighted matches, burning cigarettes or cigars, tobacco paper, charcoal or other flammable material at any park, facility or trail. However, the use of barbecue burners or cooking in the picnic area at Springdale Park is permissible. No person shall leave the immediate vicinity of any fire, which he/she has started or used without first extinguishing the fire.

Fireworks, Sky Lanterns & Explosives

18. No person shall bring into a park, or public property or have in his possession, or set off or otherwise cause to explode any firecrackers, torpedo, rocket, **sky lanterns**, fireworks or explosives, or discharge them or throw them into any park area from land or property adjacent thereto.

Drone Usage (includes remote control planes)

19. **The general public is not permitted to use drones within the City of Birmingham's park system. Drones may be used to conduct official City business such as aerial mapping, by law enforcement, or other City led activities only.**

Obstructions; Damage; Fences; Disposal

20. No person shall obstruct any walkway or driveway in any public park or playground. No person shall injure, mar or damage, in any manner, any monument, ornament, fence, bridge, seat, tree, fountain, shrub, herbaceous plant, flower, playground equipment, or other public property within or pertaining to such parks.

21. No person shall interfere with any fence constructed in or about any park; or deface, injure, remove, or destroy any tree, shrub, herbaceous plant, flower, or turf in any park or boulevard; or remove any dirt, sand or earth from any park or boulevard, or otherwise remove, destroy or injure any property therein; or leave or deposit

any filth, rubbish, dirt, wastepaper or other refuse in any place in any park or boulevard except in containers provided in parks for that purpose. Dumping or disposal of household or commercial waste transported from off-site to city property is prohibited.

Metal Detecting

22. The use of a metal detector must be approved by the Department of Public Services by issuance of a park permit. No digging is permitted with the use of a metal detector.

Peddling, Vending, Advertising and Signs

23. No person shall engage in the business of peddling or vending in any City of Birmingham Park without first obtaining a license from the city clerk's office. Contact the office at (248) 530-1880 for additional information.

24. No person shall expose, distribute, place any sign, advertisement, circular notice, or statement, or display any banner, City of Birmingham emblem, or design without written permission from the City.

25. Decorations may be attached to the Springdale shelter by means of masking or cellophane tape only. There should be no decorations drilled, fastened, or otherwise attached to the shelter with materials such as staples, nails, or tacks.

Boating

26. No person shall place or operate any boat including remote control, propelled by any engine in or upon waters in any park in the city, including the water of Quarton Lake.

Fishing and Wildlife

27. Subject to State of Michigan fishing licenses regulations, fishing in any water park in the City of Birmingham, including Quarton Lake is allowed. Fishing is not allowed at either Lincoln Hills Golf Course or Springdale Golf Course.

28. No person shall feed any animals including deer, cats, geese, ducks, birds or other fowl in any City Park or any municipal Golf Course.

29. No person, except an authorized city employee shall injure, kill or capture any wild bird, or disturb any wild bird's nest or the contents thereof.

Swimming

30. Swimming and/or wading is prohibited in any lake, river, public fountain or public pond in the City of Birmingham.

Vehicles

31. No vehicles, except authorized City vehicles, are allowed to be driven across lawns, sidewalks, or any other park surface for any reason.

32. No person shall operate, use, ride, or pull another individual on a wheeled vehicle, on City-owned tennis courts, basketball courts, fountains and stone work ledges. Wheeled prohibited vehicles include, but are not limited to, in-line skates, skateboards, bicycles, hover boards, wagons, roller-skates, and scooters.

33. It is unlawful for any person to operate any motorized vehicle, trail bike, all-terrain vehicle, or similar type of motorized sport vehicle anywhere in any park or trail, except for the proper use of golf carts on city golf courses.

Electric Bikes (e-bikes)

34. Class 1 and Class 2 e-bikes are permitted in all City of Birmingham parks and trail systems within city limits. Class 3 e-bikes and out of class e-bikes are not allowed.

Violation of Rules & Regulations

35. Violation of these rules or other posted rules is a misdemeanor punishable by a fine up to \$500, or imprisonment for a term not exceeding 90 days, or both.

City Commission Approval: mm/dd/yyyy
Parks and Recreation Board Approval mm/dd/yyyy



SKATE PARK

Hours of Operation: 8:00 am to 10:00 pm
IN CASE OF EMERGENCY, CALL 911

- Use of this facility is at your own risk. The City does not assume responsibility for personal injury or for any loss, theft or damage to personal items.
- You are responsible for the park's future – help keep it safe, clean and friendly. Do not litter or abuse the park in any way. Report any damage, acts of abuse or suggestions to the City Parks and Recreation Department, 248-530-1642.
- Be responsible for yourself, take turns and respect the skill level of others and the equipment. Be courteous to other skaters. Roughhousing and violence are not permitted.
- No bikes, personal ramps, or motorized equipment.
- No makeshift or street items. Existing park equipment may not be modified or moved.
- Food, drink and glass containers are prohibited inside the fence.
- Smoking, profanity and loud music are prohibited.
- No spectators inside the fence. Spectators assume risk for themselves.
- Use of safety equipment such as helmets, gloves, knee and elbow pads, wrist supports and proper shoes is recommended. Skaters are responsible for providing their own skateboard, skates, and other equipment. Skaters are responsible for inspecting equipment prior to use to insure their safety (do not use if broken or wet).
- This is an alcohol, weapon and drug free zone.
- Items brought into the Skate Park are subject to inspection at any time.
- The City reserves the right to schedule organized activities at any time without notice.
- Know your own abilities – skate safely. The Skate Park is used by both experienced and inexperienced skateboarder and skaters. Serious injury may result from being hit by a skateboard, falling or colliding.
- Rule violators may be cited, ejected or have their skate park privileges revoked. Loitering and trespassing are strictly prohibited.
- The Skate Park may be closed during inclement weather.

These rules are subject to change at any time and without prior notice.



Dog Park Rules

Hours: 6:00 am to 10:00 pm

Exception: Wednesdays: 12:00 pm –10:00 pm (April –November)

Membership Required for Entry bhamgov.org/dogpark

- All users must have a valid dog license and tag, on their dog at all times, and abide by these rules and City of Birmingham ordinances.
- Users are legally responsible for their dogs and any injuries and/or damages caused by their dog(s).
- Any dog park user involved in a dog related incident will have their access to the dog park temporarily suspended and must file a report with the police department. Once the police investigation has concluded, the involved aggressive dog or dogs must be evaluated by a certified animal behaviorist or veterinarian. This evaluation must be completed and submitted to the Parks and Recreation Office for review to determine whether the dog(s) will be permitted to re-enter the dog park.
- Dogs exhibiting aggressive behavior or barking excessively must be removed from the site immediately.
- Use of the off leash dog area is at the user's own risk.
- Minimum age for users is 18 years of age. Children between 5 and 17 years of age may enter with a parent or guardian. Children less than 5 years of age are not permitted in the fenced area.
- Users may bring up to 2 dogs into the Dog Park.
- Users must remain inside the fenced site with their dog(s) at all times.
- The following are prohibited in the Dog Park: dogs in heat, dogs under the age of four months, dogs with contagious diseases, internal or external parasites, aggressive dogs, and unfixed male dogs over the age of six months.
- Fighting between dogs is not allowed. Users must immediately remove any dog exhibiting hostility or aggressive behavior from the site. Users may protect dogs for which they are responsible but shall first protect people in the site, and then cause or encourage disengagement and separation of dogs engaged in fighting or aggressive behavior. Users bear all risks of their involvement. City of Birmingham employees have no responsibility to intervene in any such situation and are not responsible for the behavior or suitability of any dog brought to the Dog Park.
- Food, alcoholic beverages and glass containers are not allowed in the Dog Park.
- Pet food is prohibited.
- Users must clean up their dog(s) waste and deposit it in the receptacles provided.
- The City of Birmingham Department of Public Services reserves the right to prohibit the use of the site to any user who is in violation of these rules or any ordinance.
- From time to time parts of the Dog Park may be closed for maintenance purposes.
- These rules are subject to change at any time and without prior notice.

City Contacts:

Monday – Friday 8:00am – 5:00 pm (except Holidays) 248-530-1642

After Normal Business Hours and Weekends: 248-530-1870



Tennis Court Rules

- To reserve a tennis court visit www.play.bhamgov.org or contact our Parks and Recreation Office at 248-530-1642.
- To report damage contact the Parks and Recreation Office at 248.530.1642.
- The tennis rules exist for the purpose of maintaining our courts and providing opportunity for all to use and enjoy the courts.
- Each user is asked to cooperate and to assist in enforcing the tennis court rules.
- Priority use of the courts are for Birmingham residents that have made a reservation with the Parks and Recreation office.
- Tennis players may reserve two (2) hours of court time per week for up to two weeks; (i.e. 2 hours for the current week and 2 hours for the following week) between 7:00 am -9:00 pm, Monday - Sunday.
- No in-line skates, skateboards, bicycles, wagons, roller-skates, **electric boards** or scooters.
- Private instructions and classes are allowed **by permit only. All instructors must secure a permit through the Parks and Recreation Office, provide liability insurance and sign a hold harmless agreement before use of the courts. A permit fee of \$20 per court per hour applies. Any instruction without permit will be considered a rule violation and subject to penalty.**
- No ball playing of any kind other than tennis. **Pickleball is only permitted at Crestview pickleball courts, Poppleton multi-purpose court or any courts designated by the Department of Public Services.**
- These rules are subject to change at any time and without prior notice.

Pickleball Rules:

- Reservations available 12pm-8pm daily (no charge) for residents only: Visit www.play.bhamgov.org to reserve
- Pickleball Only
- Good sportsmanship is the rule, respect all players
- Limit Play to 1 hour if others are waiting
- Designated Open Play 9am-12pm daily- see Open Play rules
- Use the Pickleball Courts at your own risk
- No pets on courts
- No food, glass or alcoholic beverages
- No foul, combative or hostile language
- No amplified music
- No in-line skates, skateboards, bicycles, wagons, roller-skates or scooters
- Proper footwear required
- Children under the age of 12 must be accompanied by an adult
- Residents may reserve two (2) hours of court time per week for up to two (2) weeks
- Private classes are not allowed.

Open Play (Mixed Skill Level) Rules: 9am-12pm Daily

Open Play is defined as a casual, organized session or period of time for players of all skill levels to show up and play together, in a rotational fashion, for recreational purposes. Open Play is not available for tournaments. All six courts are available for Open Play during the designated hours. All skill levels of players (beginner, intermediate, advanced) are welcome for Open Play.

- All Pickleball Rules apply to Open Play
- When courts are full, waiting players are to place their paddles in the paddle holder
- If there is a paddle or more up in the paddle holder, even if there are empty courts: Teams that have finished their game- losers come off the courts and allow the waiting player(s) to mix in
- If there are eight (8) or more waiting: The entire foursome should exit the court upon completion of their game
- As players remove their paddles from the holder, they should move the bar to the right to the next set of paddles waiting and so on. If players remove their paddles at the far right or end of the holder, they should slide the bar back to the left or beginning of the holder

Fwd: Request to include letter in city commission packet

1 message

Carrie Laird <Claird@bhamgov.org>

Tue, Oct 14, 2025 at 2:50 PM

To: "Folk, Connie" <Cfolk@bhamgov.org>, Brad McNab <bmcnab@bhamgov.org>, Lance Shipman <lance@penchura.com>

Fyi

Carrie A. Laird
Parks & Recreation Manager
851 S. Eton
Birmingham, MI 48009
248-530-1714

Important Note to Residents

Let's connect! Join the Citywide Email System to receive important City updates and critical information specific to your neighborhood at www.bhamgov.org/citywideemail.

----- Forwarded message -----

From: **Scott Zielinski** <szielinski@bhamgov.org>
Date: Tue, Oct 14, 2025, 09:30
Subject: Fwd: Request to include letter in city commission packet
To: Carrie Laird <Claird@bhamgov.org>

fyi

Scott D. Zielinski, PE
DPS Director
City of Birmingham
Tel: 248-530-1702

----- Forwarded message -----

From: **Danny Seidman** <dhseidman@gmail.com>
Date: Fri, Oct 10, 2025 at 11:31 AM
Subject: Re: Request to include letter in city commission packet
To: Brad Host <bhost@bhamgov.org>
CC: Pam Graham <pamcracker@gmail.com>, Scott Zielinski <szielinski@bhamgov.org>, Jana Ecker <Jecker@bhamgov.org>

Brad,
Thanks so much! I appreciate your response and attention to this important matter.

Best,
Danny

From: Brad Host <bhost@bhamgov.org>
Sent: Friday, October 10, 2025 12:44 PM
To: Danny Seidman <dhseidman@gmail.com>
Cc: Pam Graham <pamcracker@gmail.com>; Scott Zielinski <szielinski@bhamgov.org>; Jana Ecker <Jecker@bhamgov.org>
Subject: Re: Request to include letter in city commission packet

Danny,

Thank you for your very comprehensive evaluation of Poppleton's proposed equipment. Am forwarding to Pam Graham whose on the Parks and Rec Board can as well as Scott Zielinski, DPS, with the hope they can evaluate your concerns.

Thanks again for your attention to our playground needs!

Best safe wishes,

Brad

248.219.2249

Sent from my iPhone

On Oct 9, 2025, at 3:23 PM, Danny Seidman <dhseidman@gmail.com> wrote:

I would also like to mention Grant Park in Royal Oak, as they have an impressive outdoor fitness equipment setup.

 Grant Park

From: Danny Seidman <dhseidman@gmail.com>

Date: Thursday, October 9, 2025 at 2:03 PM

To: city-commission@bhamgov.org <city-commission@bhamgov.org>, clerksoffice@bhamgov.org <clerksoffice@bhamgov.org>

Subject: Request to include letter in city commission packet

Good afternoon,

I am requesting that this letter & images be included in the city commission meeting packet for 10/20/25 as well as 10/27/25 (when the vote on this matter is scheduled to take place). Please confirm receipt of this email, and confirm that it will be included in those packets when able.

Thank you,
Danny Seidman
652 Wimbledon Drive

To the Honorable Members of the Birmingham City Commission,

Thank you for your service to our community. I also want to express my appreciation to the Parks & Recreation Board for their hard work and commitment to enhancing Birmingham's public spaces. Their mission — to *“provide opportunities for the enjoyment, education, and inspiration for present and future generations of residents and visitors through stewardship of natural, cultural, and recreational resources”* — is one I deeply support.

I am writing as both a **concerned neighbor, primary care physician, and public health expert** who cares deeply about the physical, mental, and social health of our community — especially our children. The proposed redesign of **Poppleton Park** does not, in its current form, fully align with the Parks & Rec mission, nor with the guiding vision of Birmingham's **2040 Master Plan**. While I wholeheartedly applaud the focus on accessibility, the design's heavy emphasis on specialized equipment for one group of users inadvertently limits meaningful engagement for others — including older

children, teens, adults, and seniors. In doing so, it risks reducing enjoyment and activity for *everyone*, rather than broadening it.

Inconsistency with City Vision

The **2040 Master Plan** calls for “vibrant, connected, and inclusive neighborhoods that support residents across all stages of life.” Yet this proposal risks transforming Poppleton Park from a *city/neighborhood park* into a *regional attraction*. Expanded parking and increased traffic would erode the very qualities that make this park — and this neighborhood — special: its walkability, its serenity, and its community-centered design.

The **Parks & Recreation Master Plan (Dec. 2023)** echoes these priorities with a guiding principle of “*Inclusivity and Accessibility: embracing diversity and ensuring that everyone in the community can enjoy our parks, regardless of their background or abilities.*” The phrase “*everyone in the community*” is critical. Accessibility should not come at the cost of intergenerational inclusivity, environmental stewardship, or neighborhood character.

Evidence from Public Health

As a physician, I see daily the importance of environments that promote physical challenge, unstructured play, and intergenerational connection.

- The **American Academy of Pediatrics** emphasizes that age-appropriate challenge is essential for developing confidence, coordination, and resilience.
- The **CDC** and **World Health Organization** stress that intergenerational spaces foster social connection, physical activity, and mental well-being across the lifespan.
- The **American Psychological Association** highlights the role of unstructured play in creativity, emotional regulation, and problem-solving.

The Poppleton Park Redesign is an opportunity to embody these principles — but that requires a design that reflects them.

Concerns with Current Proposal

- **Over-specialization:** The new design risks narrowing the park’s audience to younger children, excluding older kids and adults who need challenge and open-ended play.
- **Parking expansion:** Additional paved areas conflict with the mission to *steward natural resources* and preserve beauty.
- **Neighborhood identity:** Increased car traffic would erode the quiet, walkable charm that makes Poppleton unique.

A Better Way Forward

I respectfully urge the Commission to reconsider the current plan and direct the Parks & Recreation Board to revise the design to better align with the City’s mission and long-term vision. Specifically, I recommend:

1. **Tiered challenge zones** for all ages — from toddlers to teens to seniors (see attached images for some examples found at Pembroke Elementary and West Maple Elementary).
2. **Universal access areas** where people of all abilities can play and move together.
3. **Outdoor fitness and mobility equipment** for adults and older adults, encouraging lifelong activity.
4. **Strict limits on parking expansion** to preserve green space and maintain the park's neighborhood character.
5. **Incorporation of evidence-based design principles** from leading health and play organizations.

I've included examples of play and fitness structures that achieve these goals — equipment that encourages creativity, physical development, and intergenerational participation. My hope is that Poppleton Park can serve as a *model of health, inclusion, and environmental balance* — a space where accessibility and challenge coexist, and where the needs of *all generations* are honored.

Thank you for your time, for your dedication to stewardship, and for your thoughtful consideration of how this park can best serve both current and future residents.

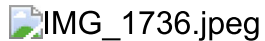
With respect and gratitude,

Danny Seidman, DO, MPH

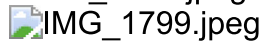
Birmingham Resident & Neighbor

Primary Care Physician | Community Health Advocate

<Screenshot 2025-10-09 at 1.54.52 PM.png>

IMG_1736.jpeg

<IMG_1747.jpeg>

IMG_1799.jpeg

<IMG_1800.jpeg>

--

You received this message because you are subscribed to the Google Groups "City Commission" group.

To unsubscribe from this group and stop receiving emails from it, send an email to city-commission+unsubscribe@bhamgov.org.

To view this discussion visit <https://groups.google.com/a/bhamgov.org/d/msgid/city-commission/BL1PR19MB594004DADE022F0735992392A3EEA%40BL1PR19MB5940.namprd19.prod.outlook.com>.

Re: Crestview Pickleball Courts - New Structure Rumor

1 message

Thomas Boltik <tlb1025@comcast.net>

Mon, Oct 6, 2025 at 7:47 PM

To: Jana Ecker <Jecker@bhamgov.org>

Cc: City Commission <city-commission@bhamgov.org>, "claird@bhamgov.org" <claird@bhamgov.org>, "szielinski@bhamgov.org" <szielinski@bhamgov.org>, "cfolk@bhamgov.org" <cfolk@bhamgov.org>

Jana,

Thank you for reaching out, it is appreciated.

We plan on attending the upcoming meeting on the 28th.

Not sure if you are the correct person to ask but it was mentioned in the October 23, 2023 Parks and Recreation Board Meeting Minutes Pam Graham stated the qualified contractor would do a sound test to verify the fencing material option will work. Since the RFQ for "Pickleball Sound Barrier" states the nearest residence on the South end is about 90 feet, which is us, I would like to know where to find the detail of the contractor's proposal to understand why the contractor thinks it will work and the test results that prove their theory. (Really, I would like to understand how courts got built <100 ft. from residences.)

Scott, Carrie,

One more suggestion - If the city chooses to use it's resources to blow leaves from the courts this activity should start at 9:00AM when the courts open. These courts are in a neighborhood and is not a private club - There should be no pressure to have it "ready" by 9AM. Why is the "Pickleball Community" being favored? It is bad enough to listen to the cars, people and pickleballs from 9AM to 8PM 7 days a week. Why do neighbors now have to listen the the leaf blower on the courts before 9AM? After living by these courts every 1/2 hour of peace is valuable.

After reading through meeting minutes and observing the courts since they were installed it is obvious that these are a pet project for someone in the city government. Favor the neighbors, not the "pickleball community." And, take the stress of these courts by adding more courts at Kenning Park or Poppleton as proposed in earlier city meetings. If less than 100 feet is good for us why isn't it for them?

Sincerely,

Tom.

On 09/30/2025 5:22 PM EDT Jana Ecker <jecker@bhamgov.org> wrote:

Good afternoon Mr. Boltik,

Your email below to the City Commissioners was forwarded to me. Thank you for taking the time to share your observations and concerns regarding the Crestview courts. We appreciate the perspective of nearby homeowners, and your feedback helps us better understand the impact the courts have on the surrounding neighborhood.

Please be advised that there is no new building or structure proposed to be added at Crestview Park. The only planned upgrades are to add a sound absorption system on the north and south sides of the pickleball courts in the spring of 2026. The only change that has recently occurred is that we have removed the ability for residents to reserve pickleball courts this week and next as we have a contractor scheduled to come in and make the fencing taller and stronger surrounding the courts to support the addition of the sound absorption system. These improvements were approved by the City Commission in the current fiscal year budget.

We recognize the importance of balancing recreational opportunities for the community with the quality of life for those who live near our parks. Noise, parking, and respectful behavior from players are all important

issues, and we are actively working to address them. The City continues to evaluate both the use of the courts and the effect on nearby residents. Your suggestions will be included in our review as we discuss future improvements and will be shared with the Parks and Recreation Board. We will continue to remind players to respect the surrounding neighborhood and to work with enforcement staff as needed.

Thank you again for reaching out and for your patience as we work toward solutions for all. Please feel free to attend the upcoming Parks & Recreation Board meeting on October 28, 2025 to share your comments.

Jana L. Ecker
City Manager
Birmingham, MI
(248) 530-1811

On Tue, Sep 30, 2025 at 2:37 PM Therese Longe <tlonge@bhamgov.org> wrote:

Jana,

Can we determine if we are building "a structure" at the pickleball courts at Crestview?

Thanks,

Therese

----- Forwarded message -----

From: **Thomas Boltik** <tlb1025@comcast.net>

Date: Tue, Sep 30, 2025, 1:15 PM

Subject: Re: Crestview Pickleball Courts - New Structure Rumor

To: tlonge@bhamgov.org <tlonge@bhamgov.org>, cballer@bhamgov.org <cballer@bhamgov.org>, kschafer@bhamgov.org <kschafer@bhamgov.org>, ahaig@bhamgov.org <ahaig@bhamgov.org>, bhost@bhamgov.org <bhost@bhamgov.org>, along@bhamgov.org <along@bhamgov.org>, jemerine@bhamgov.org <jemerine@bhamgov.org>

Hello,

I did receive a message from Brad offering a phone call. However, I would like a response in writing as I feel a call is just an attempt to brush me off.

Any written response is appreciated.

Sincerely,

Tom.

On 09/27/2025 4:09 PM EDT Thomas Boltik <tlb1025@comcast.net> wrote:

Hello,

There is a rumor circulating that the Crestview Pickleball courts will be closed and a "structure" built starting sometime during the week of September 29. Is this rumor true? Will this be a building like structure?

If so, I believe all activity should be stopped until a town hall or input from neighbors within ear shot / impacted by the traffic & parking on the street has occurred. At some parks for other activities there have been signs with QR codes leading to links explaining the proposed changes. Why not this change?

My observation since the courts have opened is that these courts are someone's pet project within city government who really couldn't care less about the home owners in the surrounding neighborhood.

Some suggestions:

- 1.) Notify and get input from the surrounding neighbors before any physical changes or rule of play changes are made.
- 2.) Erect a six foot fence at the entrances to prevent people from jumping and playing during closed hours.
- 3.) Install a key fob system like the dog park. When people buy the fob they should be required to commit to using paddles and balls that are designed for reduced noise. Key fobs have been mentioned before but deemed too costly. If the rumor about changes is true how is there money now for upgrades?
- 4.) Install more courts at parks like Kenning that have space and parking to alleviate some of the stress on the Crestview courts. If neighbors rejected courts being built at other parks why do their voices and opinions seem to carry more weight than the Crestview homeowners?
- 5.) Provide neighbors in the surrounding area with a 25% property tax reduction due to the noise annoyance - Hours are 9AM to 8PM - This is 11 hours/day seven days a week during good weather.
- 6.) Treat the courts like the old tennis courts - Why is the city using city resources to leaf blow? We've lived here since 2000. The tennis courts were never blown free of leaves.
- 7.) During city meetings play pickle ball noise in the background. Yes, the noise can be heard in houses too.
- 8.) Remind people via communications, including signs, that this is a neighborhood and not their private club. It is becoming irritating to see people's clothes and things hanging over the fence when the courts are closed. Either take to lost and found when the trash is emptied or throw out forgotten belongings.

Free Play I understand will be addressed during an upcoming park meeting. Play is anything but "free." The same flash mobs appear and take the courts. Much of it appears organized - On some days I can see the person with the whiteboard or clipboard organizing and directing. Also, I see the same cars parked outside on specific days.

Credit to the Police and Parking enforcement for always responding to calls. I do appreciate the city trying to support homeowners but respectful behavior of the players is also needed.

Any feedback is appreciated. These courts really seem to be a pet project and I think it should stop being treated as such. Why is the city catering to the players - many of which don't seem to live in Birmingham.

Sincerely,

Tom Boltik
1700 Shipman Blvd.

Re: Crestview Pickleball Courts - New Structure Rumor

1 message

Scott Zielinski <szielinski@bhamgov.org> Tue, Oct 7, 2025 at 5:04 PM
 To: Thomas Boltik <tlb1025@comcast.net>
 Cc: Jana Ecker <Jecker@bhamgov.org>, "claird@bhamgov.org" <Claird@bhamgov.org>, "cfolk@bhamgov.org" <cfolk@bhamgov.org>

Good Afternoon Mr. Boltik,

The history of the existence of sports courts in that location predates most of the current City staff. We do know that the City purchased the land from the State Land Board in 1943. We do not have a direct record of when the court was installed, but we do know the court was resurfaced in 1986 (at that time, it was being used as a tennis court). The Courts were renovated in 2006, and eventually, the courts were modified for pickleball nets that opened in 2023. The location was selected based on the following factors: Crestview was a top 3 choice for potential new courts when reviews were being conducted for the potential construction of new courts. Once it was determined that it would not be possible to construct new courts at any city location due to the cost of building at the time, the City reviewed the parks to see if there was a tennis court that could be modified for pickleball. Crestview had a very low use rate for tennis reservations, which made it a prime candidate for renovation. Crestview was ultimately determined to be the most appropriate location for the renovated court based on these factors. The location of the sports court surface was existing; the modifications were for the nets in the existing space.

To clarify, our goal of the project is to help limit noise. You asked about the proof that this system will work. This system is designed to dampen the sound. The information below is from the product information for the padding material. This material is designed to help "absorb/block" 1/3 of sound at the frequencies below.

ACOUSTICAL PERFORMANCE

1/3 Octave Sound Blocking Coefficients at the Octave Band Frequencies							
Frequency (Hz)	125	250	500	1K	2K	4K	STC
2" Thickness	14	17	25	38	45	49	29

ASTM E-90 & E 413

1/3 Octave Sound Absorption Coefficients at the Octave Band Frequencies							
Frequency (Hz)	125	250	500	1K	2K	4K	NRC
2" Thickness	0.10	0.57	0.83	0.69	0.51	0.37	0.65

ASTM C 423

You ask about the practices of staff on opening the courts. The pickleball courts are the only sports courts that are gated with a lock, so they do require us to unlock the courts so that they can be used during the hours that have been set for use, the locked gate was added to help ensure that posted hours were being followed/enforced. Staff not only blow off the pickleball courts, but we also blow off tennis courts when we are checking for trash at parks with tennis courts if we observe water, leaves, or other debris at the time of our visit.

You also asked about us building other courts to help eliminate the stress on this location. For your knowledge, the tennis courts at Poppleton Park have been painted for pickleball use, but we have had little to no use of that location.

Please let me know if there are any other questions that we can answer. The City hopes this project can help to address some of your concerns.

Scott D. Zielinski, PE
 DPS Director
 City of Birmingham

Tel: 248-530-1702

On Mon, Oct 6, 2025 at 7:47 PM Thomas Boltik <tlb1025@comcast.net> wrote:

Jana,

Thank you for reaching out, it is appreciated.

We plan on attending the upcoming meeting on the 28th.

Not sure if you are the correct person to ask but it was mentioned in the October 23, 2023 Parks and Recreation Board Meeting Minutes Pam Graham stated the qualified contractor would do a sound test to verify the fencing material option will work. Since the RFQ for "Pickleball Sound Barrier" states the nearest residence on the South end is about 90 feet, which is us, I would like to know where to find the detail of the contractor's proposal to understand why the contractor thinks it will work and the test results that prove their theory. (Really, I would like to understand how courts got built <100 ft. from residences.)

Scott, Carrie,

One more suggestion - If the city chooses to use it's resources to blow leaves from the courts this activity should start at 9:00AM when the courts open. These courts are in a neighborhood and is not a private club - There should be no pressure to have it "ready" by 9AM. Why is the "Pickleball Community" being favored? It is bad enough to listen to the cars, people and pickleballs from 9AM to 8PM 7 days a week. Why do neighbors now have to listen the the leaf blower on the courts before 9AM? After living by these courts every 1/2 hour of peace is valuable.

After reading through meeting minutes and observing the courts since they were installed it is obvious that these are a pet project for someone in the city government. Favor the neighbors, not the "pickleball community." And, take the stress of these courts by adding more courts at Kenning Park or Poppleton as proposed in earlier city meetings. If less than 100 feet is good for us why isn't it for them?

Sincerely,

Tom.

On 09/30/2025 5:22 PM EDT Jana Ecker <jecker@bhamgov.org> wrote:

Good afternoon Mr. Boltik,

Your email below to the City Commissioners was forwarded to me. Thank you for taking the time to share your observations and concerns regarding the Crestview courts. We appreciate the perspective of nearby homeowners, and your feedback helps us better understand the impact the courts have on the surrounding neighborhood.

Please be advised that there is no new building or structure proposed to be added at Crestview Park. The only planned upgrades are to add a sound absorption system on the north and south sides of the pickleball courts in the spring of 2026. The only change that has recently occurred is that we have removed the ability for residents to reserve pickleball courts this week and next as we have a contractor scheduled to come in and make the fencing taller and stronger surrounding the courts to support the addition of the sound absorption system. These improvements were approved by the City Commission in the current fiscal year budget.

We recognize the importance of balancing recreational opportunities for the community with the quality of life for those who live near our parks. Noise, parking, and respectful behavior from players are all important issues, and we are actively working to address them. The City continues to evaluate both the use of the courts and the effect on nearby residents. Your suggestions will be included in our review as we discuss future improvements and will be shared with the Parks and Recreation Board. We will continue to remind players to respect the surrounding neighborhood and to work with enforcement staff as needed.

Thank you again for reaching out and for your patience as we work toward solutions for all. Please feel free to attend the upcoming Parks & Recreation Board meeting on October 28, 2025 to share your comments.

Jana L. Ecker
City Manager
Birmingham, MI
(248) 530-1811

On Tue, Sep 30, 2025 at 2:37 PM Therese Longe <tlonge@bhamgov.org> wrote:

Jana,

Can we determine if we are building "a structure" at the pickleball courts at Crestview?

Thanks,

Therese

----- Forwarded message -----

From: **Thomas Boltik** <tlb1025@comcast.net>

Date: Tue, Sep 30, 2025, 1:15 PM

Subject: Re: Crestview Pickleball Courts - New Structure Rumor

To: tlonge@bhamgov.org <tlonge@bhamgov.org>, cballer@bhamgov.org <cballer@bhamgov.org>, kschafer@bhamgov.org <kschafer@bhamgov.org>, ahaig@bhamgov.org <ahaig@bhamgov.org>, bhost@bhamgov.org <bhost@bhamgov.org>, along@bhamgov.org <along@bhamgov.org>, jemerine@bhamgov.org <jemerine@bhamgov.org>

Hello,

I did receive a message from Brad offering a phone call. However, I would like a response in writing as I feel a call is just an attempt to brush me off.

Any written response is appreciated.

Sincerely,

Tom.

On 09/27/2025 4:09 PM EDT Thomas Boltik <tlb1025@comcast.net> wrote:

Hello,

There is a rumor circulating that the Crestview Pickleball courts will be closed and a "structure" built starting sometime during the week of September 29. Is this rumor true? Will this be a building like structure?

If so, I believe all activity should be stopped until a town hall or input from neighbors within ear shot / impacted by the traffic & parking on the street has occurred. At some parks for other activities there have been signs with QR codes leading to links explaining the proposed changes. Why not this change?

My observation since the courts have opened is that these courts are someone's pet project within city government who really couldn't care less about the home owners in the surrounding neighborhood.

Some suggestions:

- 1.) Notify and get input from the surrounding neighbors before any physical changes or rule of play changes are made.
- 2.) Erect a six foot fence at the entrances to prevent people from jumping and playing during closed hours.
- 3.) Install a key fob system like the dog park. When people buy the fob they should be required to commit to using paddles and balls that are designed for

reduced noise. Key fobs have been mentioned before but deemed too costly. If the rumor about changes is true how is there money now for upgrades?

4.) Install more courts at parks like Kenning that have space and parking to alleviate some of the stress on the Crestview courts. If neighbors rejected courts being built at other parks why do their voices and opinions seem to carry more weight than the Crestview homeowners?

5.) Provide neighbors in the surrounding area with a 25% property tax reduction due to the noise annoyance - Hours are 9AM to 8PM - This is 11 hours/day seven days a week during good weather.

6.) Treat the courts like the old tennis courts - Why is the city using city resources to leaf blow? We've lived here since 2000. The tennis courts were never blown free of leaves.

7.) During city meetings play pickle ball noise in the background. Yes, the noise can be heard in houses too.

8.) Remind people via communications, including signs, that this is a neighborhood and not their private club. It is becoming irritating to see people's clothes and things hanging over the fence when the courts are closed. Either take to lost and found when the trash is emptied or throw out forgotten belongings.

Free Play I understand will be addressed during an upcoming park meeting. Play is anything but "free." The same flash mobs appear and take the courts. Much of it appears organized - On some days I can see the person with the whiteboard or clipboard organizing and directing. Also, I see the same cars parked outside on specific days.

Credit to the Police and Parking enforcement for always responding to calls. I do appreciate the city trying to support homeowners but respectful behavior of the players is also needed.

Any feedback is appreciated. These courts really seem to be a pet project and I think it should stop being treated as such. Why is the city catering to the players - many of which don't seem to live in Birmingham.

Sincerely,

Tom Boltik
1700 Shipman Blvd.

Re: Crestview Pickleball Courts - New Structure Rumor

1 message

Thomas Boltik <tlb1025@comcast.net>

Thu, Oct 9, 2025 at 10:03 AM

To: Scott Zielinski <szielinski@bhamgov.org>

Cc: Jana Ecker <Jecker@bhamgov.org>, "claird@bhamgov.org" <Claird@bhamgov.org>, "cfolk@bhamgov.org" <cfolk@bhamgov.org>, City Commission <city-commission@bhamgov.org>

Scott,

Just a few comments -

1.) Crestview Usage Prior to Dedicated Pickleball - The courts were being used by people and families in the neighborhood for both tennis, lessons and non-tennis activities. Usage was consistent with the City's own definition of a Neighborhood Park which Crestview is classified. Crestview is not a community park. From the Birmingham website below:

"Neighborhood Parks

Neighborhood parks are typically multi-purpose facilities that serve as the recreational and social focus of a neighborhood. They provide areas for both passive and active recreation activities such as field games, court games, playgrounds, picnicking, and the like. Neighborhood parks generally between five and ten acres in size and serve residents within one-half mile. The City of Birmingham community contains eleven parks that can be classified as Neighborhood Parks."

Source: www.bhamgov.org

The courts are really no longer accessible to neighborhood families of all age and skill levels and have turned this part of the park into a Metropark with a strip mall atmosphere, not a Birmingham neighborhood park. Search the internet and anyone in any state can find these courts.

2.) Budget - Prior to dedicated pickleball courts the tennis courts were painted like those now at Poppleton and painted for multi-use. If money and the budget was the issue it seems the best choice would have been to leave the two Crestview courts as multipurpose courts. This option would have been very low cost and consistent with the City's definition of a Neighborhood Park.

3.) Poppleton - Too arduous a drive, probably perceived as not "regulation" and not enough courts for the flash mob to run their restrictive open play.

4.) Technical - Thanks for the spec sheet, but I am really looking for the full analysis and outcome.

Pet Project?

Sincerely,

Tom.

On 10/07/2025 5:04 PM EDT Scott Zielinski <szielinski@bhamgov.org> wrote:

Good Afternoon Mr. Boltik,

The history of the existence of sports courts in that location predates most of the current City staff. We do know that the City purchased the land from the State Land Board in 1943. We do not have a direct record of when the court was installed, but we do know the court was resurfaced in 1986 (at that time, it was being used as a tennis court). The Courts were renovated in 2006, and eventually, the courts were modified for pickleball nets that opened in 2023. The location was selected based on the following factors: Crestview was a top 3 choice for potential new courts when reviews were being conducted for the potential construction of new courts. Once it was determined that it would not be possible to construct new courts at any city location due to the cost of building at the time, the City reviewed the parks to see if there was a

tennis court that could be modified for pickleball. Crestview had a very low use rate for tennis reservations, which made it a prime candidate for renovation. Crestview was ultimately determined to be the most appropriate location for the renovated court based on these factors. The location of the sports court surface was existing; the modifications were for the nets in the existing space.

To clarify, our goal of the project is to help limit noise. You asked about the proof that this system will work. This system is designed to dampen the sound. The information below is from the product information for the padding material. This material is designed to help "absorb/block" 1/3 of sound at the frequencies below.

ACOUSTICAL PERFORMANCE

1/3 Octave Sound Blocking Coefficients at the Octave Band Frequencies							
Frequency (Hz)	125	250	500	1K	2K	4K	STC
2" Thickness	14	17	25	38	45	49	29

ASTM E-90 & E 413

1/3 Octave Sound Absorption Coefficients at the Octave Band Frequencies							
Frequency (Hz)	125	250	500	1K	2K	4K	NRC
2" Thickness	0.10	0.57	0.83	0.69	0.51	0.37	0.65

ASTM C 423

You ask about the practices of staff on opening the courts. The pickleball courts are the only sports courts that are gated with a lock, so they do require us to unlock the courts so that they can be used during the hours that have been set for use, the locked gate was added to help ensure that posted hours were being followed/enforced. Staff not only blow off the pickleball courts, but we also blow off tennis courts when we are checking for trash at parks with tennis courts if we observe water, leaves, or other debris at the time of our visit.

You also asked about us building other courts to help eliminate the stress on this location. For your knowledge, the tennis courts at Poppleton Park have been painted for pickleball use, but we have had little to no use of that location.

Please let me know if there are any other questions that we can answer. The City hopes this project can help to address some of your concerns.

Scott D. Zielinski, PE
DPS Director
City of Birmingham
Tel: 248-530-1702

On Mon, Oct 6, 2025 at 7:47 PM Thomas Boltik <tlb1025@comcast.net> wrote:

Jana,

Thank you for reaching out, it is appreciated.

We plan on attending the upcoming meeting on the 28th.

Not sure if you are the correct person to ask but it was mentioned in the October 23, 2023 Parks and Recreation Board Meeting Minutes Pam Graham stated the qualified contractor would do a sound test to verify the fencing material option will work. Since the RFQ for "Pickleball Sound Barrier" states the nearest residence on the South end is about 90 feet, which is us, I would like to know where to find the detail of the contractor's proposal to understand why the contractor thinks it will work and the test results that prove their theory. (Really, I would like to understand how courts got built <100 ft. from residences.)

Scott, Carrie,

One more suggestion - If the city chooses to use it's resources to blow leaves from the courts this activity should start at 9:00AM when the courts open. These courts are in a neighborhood and is not a private club - There should be no pressure to have it "ready" by 9AM. Why is the "Pickleball Community" being favored? It is bad enough to listen to the cars, people and pickleballs from 9AM to 8PM 7 days a week. Why do neighbors now have to listen the the leaf blower on the courts before 9AM? After living by these courts every 1/2 hour of peace is valuable.

After reading through meeting minutes and observing the courts since they were installed it is obvious that these are a pet project for someone in the city government. Favor the neighbors, not the "pickleball community." And, take the stress of these courts by adding more courts at Kenning Park or Poppleton as proposed in earlier city meetings. If less than 100 feet is good for us why isn't it for them?

Sincerely,

Tom.

On 09/30/2025 5:22 PM EDT Jana Ecker <jecker@bhamgov.org> wrote:

Good afternoon Mr. Boltik,

Your email below to the City Commissioners was forwarded to me. Thank you for taking the time to share your observations and concerns regarding the Crestview courts. We appreciate the perspective of nearby homeowners, and your feedback helps us better understand the impact the courts have on the surrounding neighborhood.

Please be advised that there is no new building or structure proposed to be added at Crestview Park. The only planned upgrades are to add a sound absorption system on the north and south sides of the pickleball courts in the spring of 2026. The only change that has recently occurred is that we have removed the ability for residents to reserve pickleball courts this week and next as we have a contractor scheduled to come in and make the fencing taller and stronger surrounding the courts to support the addition of the sound absorption system. These improvements were approved by the City Commission in the current fiscal year budget.

We recognize the importance of balancing recreational opportunities for the community with the quality of life for those who live near our parks. Noise, parking, and respectful behavior from players are all important issues, and we are actively working to address them. The City continues to evaluate both the use of the courts and the effect on nearby residents. Your suggestions will be included in our review as we discuss future improvements and will be shared with the Parks and Recreation Board. We will continue to remind players to respect the surrounding neighborhood and to work with enforcement staff as needed.

Thank you again for reaching out and for your patience as we work toward solutions for all. Please feel free to attend the upcoming Parks & Recreation Board meeting on October 28, 2025 to share your comments.

Jana L. Ecker
City Manager
Birmingham, MI
(248) 530-1811

On Tue, Sep 30, 2025 at 2:37 PM Therese Longe <tlonge@bhamgov.org> wrote:

Jana,

Can we determine if we are building "a structure" at the pickleball courts at Crestview?

Thanks,

Therese

----- Forwarded message -----

From: **Thomas Boltik** <tlb1025@comcast.net>
Date: Tue, Sep 30, 2025, 1:15 PM
Subject: Re: Crestview Pickleball Courts - New Structure Rumor
To: tlonge@bhamgov.org <tlonge@bhamgov.org>, cballer@bhamgov.org <cballer@bhamgov.org>, kschafer@bhamgov.org <kschafer@bhamgov.org>, ahaig@bhamgov.org <ahaig@bhamgov.org>, bhost@bhamgov.org <bhost@bhamgov.org>, along@bhamgov.org <along@bhamgov.org>, jemerine@bhamgov.org <jemerine@bhamgov.org>

Hello,

I did receive a message from Brad offering a phone call. However, I would like a response in writing as I feel a call is just an attempt to brush me off.

Any written response is appreciated.

Sincerely,

Tom.

On 09/27/2025 4:09 PM EDT Thomas Boltik <tlb1025@comcast.net> wrote:

Hello,

There is a rumor circulating that the Crestview Pickleball courts will be closed and a "structure" built starting sometime during the week of September 29. Is this rumor true? Will this be a building like structure?

If so, I believe all activity should be stopped until a town hall or input from neighbors within ear shot / impacted by the traffic & parking on the street has occurred. At some parks for other activities there have been signs with QR codes leading to links explaining the proposed changes. Why not this change?

My observation since the courts have opened is that these courts are someone's pet project within city government who really couldn't care less about the home owners in the surrounding neighborhood.

Some suggestions:

- 1.) Notify and get input from the surrounding neighbors before any physical changes or rule of play changes are made.
- 2.) Erect a six foot fence at the entrances to prevent people from jumping and playing during closed hours.

- 3.) Install a key fob system like the dog park. When people buy the fob they should be required to commit to using paddles and balls that are designed for reduced noise. Key fobs have been mentioned before but deemed too costly. If the rumor about changes is true how is there money now for upgrades?
- 4.) Install more courts at parks like Kenning that have space and parking to alleviate some of the stress on the Crestview courts. If neighbors rejected courts being built at other parks why do their voices and opinions seem to carry more weight than the Crestview homeowners?
- 5.) Provide neighbors in the surrounding area with a 25% property tax reduction due to the noise annoyance - Hours are 9AM to 8PM - This is 11 hours/day seven days a week during good weather.
- 6.) Treat the courts like the old tennis courts - Why is the city using city resources to leaf blow? We've lived here since 2000. The tennis courts were never blown free of leaves.
- 7.) During city meetings play pickle ball noise in the background. Yes, the noise can be heard in houses too.
- 8.) Remind people via communications, including signs, that this is a neighborhood and not their private club. It is becoming irritating to see people's clothes and things hanging over the fence when the courts are closed. Either take to lost and found when the trash is emptied or throw out forgotten belongings.

Free Play I understand will be addressed during an upcoming park meeting. Play is anything but "free." The same flash mobs appear and take the courts. Much of it appears organized - On some days I can see the person with the whiteboard or clipboard organizing and directing. Also, I see the same cars parked outside on specific days.

Credit to the Police and Parking enforcement for always responding to calls. I do appreciate the city trying to support homeowners but respectful behavior of the players is also needed.

Any feedback is appreciated. These courts really seem to be a pet project and I think it should stop being treated as such. Why is the city catering to the players - many of which don't seem to live in Birmingham.

Sincerely,

Tom Boltik
1700 Shipman Blvd.